

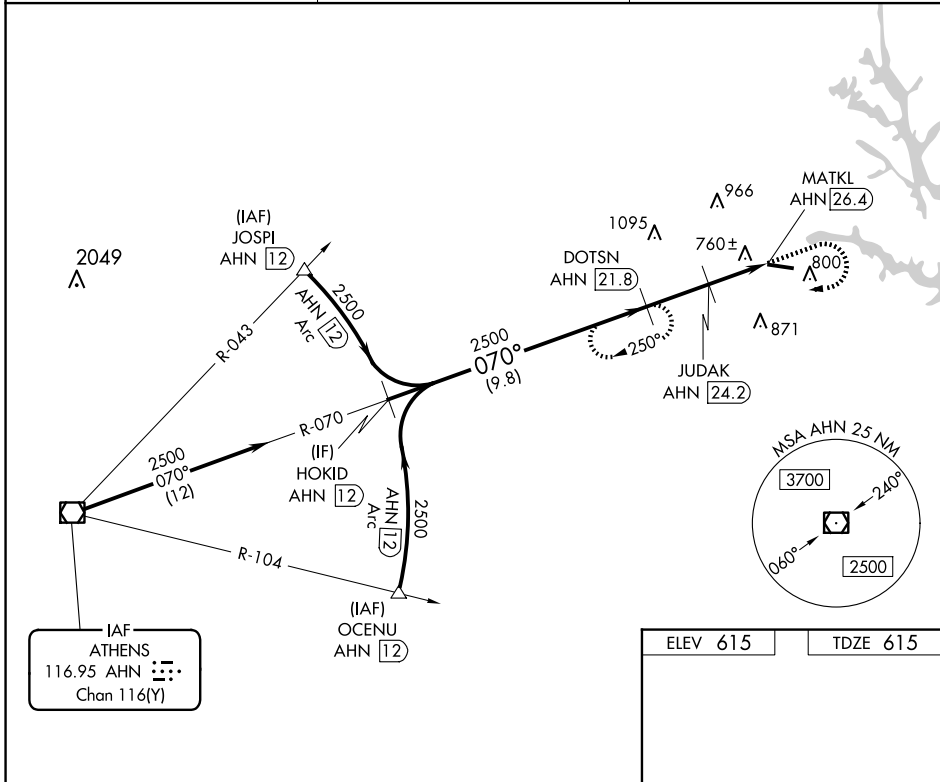
VOR/DME AHN <b>116.95</b> Chan <b>116</b> (Y)	APP CRS <b>070°</b>	Rwy Idg TDZE Apt Elev <b>5004</b> <b>615</b> <b>615</b>
---	------------------------	--

# VOR RWY 11

ELBERT COUNTY-PATZ FLD (EBA)

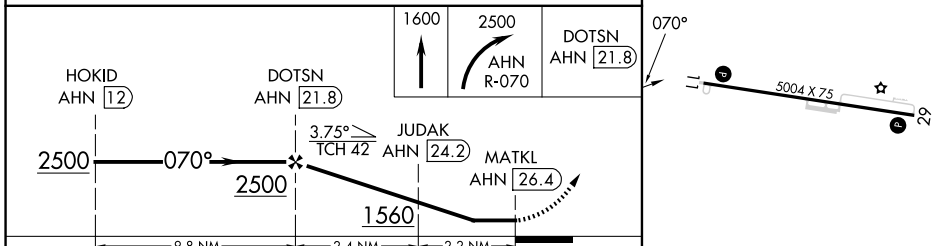
DME required.	MISSED APPROACH: Climb to 1600 then descending right turn to 2500 on AHN VOR/DME R-070 to DOTSN/AHN 21.8 DME and hold.
---------------	--

AWOS-3 <b>118.15</b>	ATLANTA CENTER <b>127.5 316.05</b>	UNICOM <b>122.8</b> (CTAF) <b>1</b>
-------------------------	---------------------------------------	--



IAF  
ATHENS  
116.95 AHN  
Chan 116(Y)

ELEV 615	TDZE 615
----------	----------



CATEGORY	A	B	C	D
S-11	1200-1	585 (600-1)	1200-1 $\frac{3}{4}$ 585 (600-1 $\frac{3}{4}$ )	NA
<b>C</b> CIRCLING	1200-1 585 (600-1)	1200-1 $\frac{1}{4}$ 585 (600-1 $\frac{1}{4}$ )	1280-2 665 (700-2)	NA

MIRL Rwy 11-29 **1**

SE-4, 23 JAN 2025 to 20 FEB 2025

SE-4, 23 JAN 2025 to 20 FEB 2025