

| | | |
|--|------------------------|---|
| WAAS CH 40029 W31A | APP CRS 311° | Rwy Idg 7000 TDZE 202 Apt Elev 208 |
|--|------------------------|---|

RNAV (GPS) RWY 31

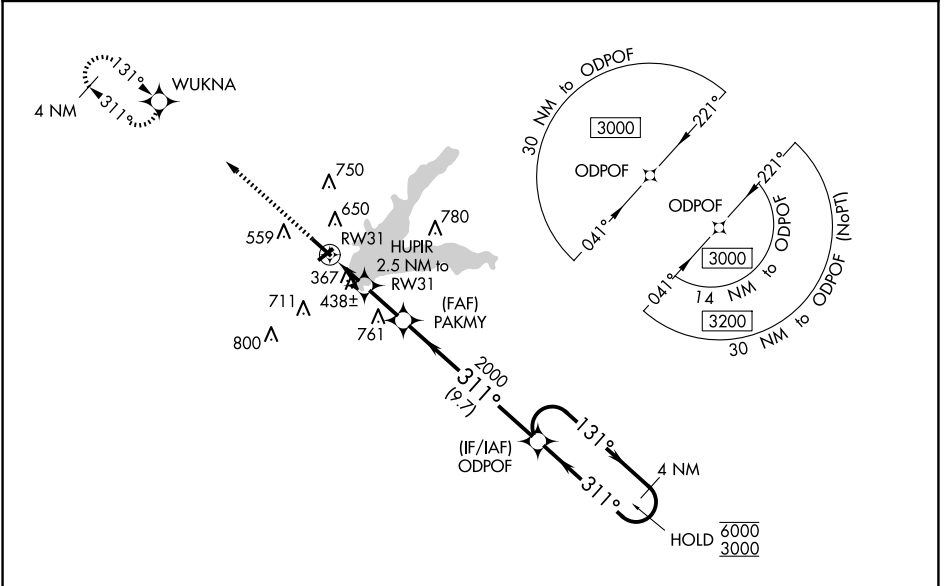
GRENADA MUNI (GNF)

RNP APCH.

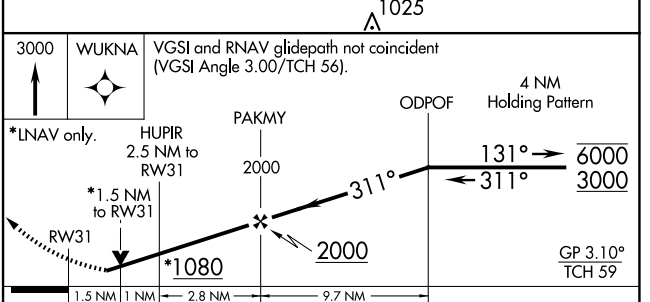
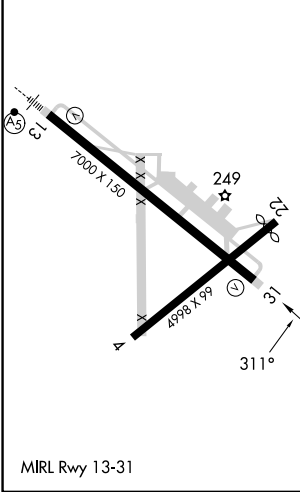
⚠ Baro-VNAV and VDP NA when using Greenwood altimeter setting. Rwy 31 helicopter visibility reduction below $\frac{3}{4}$ SM NA. For uncompensated Baro-VNAV systems, LNAV/VNAV NA below -9°C or above 46°C. When local altimeter setting not received use Greenwood altimeter setting: increase all DAs 65 feet and visibility LNAV/VNAV Cat C and D $\frac{1}{8}$ SM; increase all MDAs 80 feet and visibility LNAV Cats C and D and Circling all Cats $\frac{3}{8}$ SM. Circling Rwy 4, 22, NA at night.

MISSED APPROACH: Climb to 3000 direct WUKNA and hold.

| | | |
|----------------------------|---------------------------------------|-------------------------------|
| AWOS-3PT 118.025 | MEMPHIS CENTER 128.5 279.55 | UNICOM 122.8 (CTAF) |
|----------------------------|---------------------------------------|-------------------------------|



| | |
|----------|----------|
| ELEV 208 | TDZE 202 |
|----------|----------|



| CATEGORY | A | B | C | D |
|-------------------|---------------------|-------------|-------------------------|-------------------------|
| LPV DA | 513-1 311 (400-1) | | | |
| LNAV/VNAV DA | 679-1½ 477 (500-1½) | | | |
| LNAV MDA | 720-1 | 518 (600-1) | 720-1¼ | 518 (600-1¼) |
| C CIRCLING | 1000-1 | 792 (800-1) | 1000-2¼ 792 (800-2¼) | 1060-2¾ 852 (900-2¾) |

SC-4, 23 JAN 2025 to 20 FEB 2025

SC-4, 23 JAN 2025 to 20 FEB 2025