

WAAS CH <b>97532</b> <b>W16A</b>	APP CRS <b>164°</b>	Rwy Idg TDZE Apt Elev	<b>4500</b> <b>1299</b> <b>1304</b>
--	------------------------	-----------------------------	---

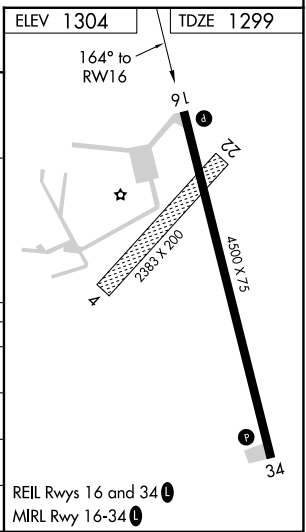
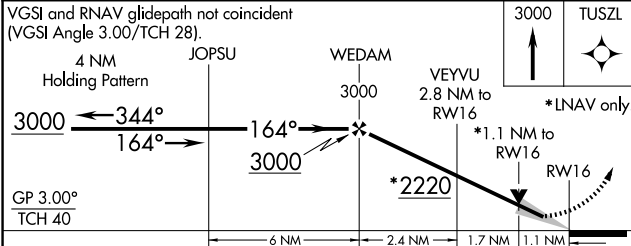
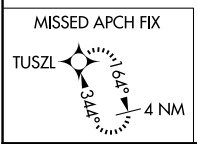
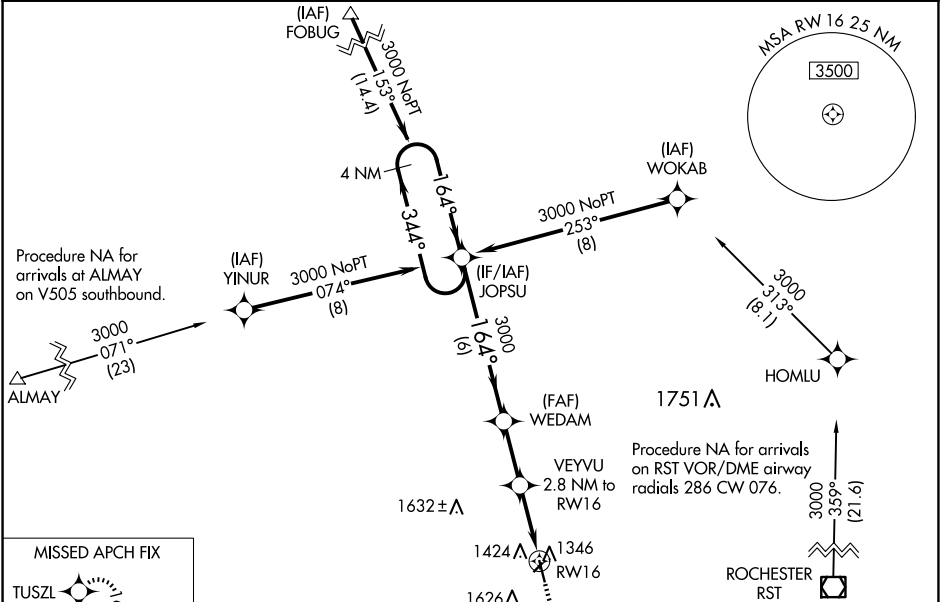
# RNAV (GPS) RWY 16

DODGE CENTER (TOB)

**⚠** For uncompensated Baro-VNAV systems, LNAV/VNAV NA below -17°C (2°F) or above 54°C (130°F). DME/DME RNP-0.3 NA. Baro-VNAV and VDP NA with Rochester Intl altimeter setting. When local altimeter setting not received, use Rochester Intl altimeter setting and increase all DA 39 feet and all MDA 40 feet, and increase LNAV/VNAV all Cats, LNAV Cat C visibility 1/8 mile, and Circling Cat C visibility 1/4 mile.

MISSED APPROACH: Climb to 3000 direct TUSZL and hold.

AWOS-3 <b>119.075</b>	ROCHESTER APP CON* <b>119.8 251.125</b>	CTAF <b>122.9</b>
--------------------------	--	----------------------



CATEGORY	A	B	C	D
LPV DA		1549-1 250 (300-1)		NA
LNAV/VNAV DA		1586-1 287 (300-1)		NA
LNAV MDA	1680-1 381 (400-1)		1680-1 381 (400-1 1/8)	NA
<b>C</b> CIRCLING	1960-1 656 (700-1)		1960-1 656 (700-1 3/4)	NA

NC-1, 23 JAN 2025 to 20 FEB 2025

NC-1, 23 JAN 2025 to 20 FEB 2025