

|  |                        |                             |   |
|--|------------------------|-----------------------------|---|
| WAAS<br>CH <b>82533</b><br><b>W21A</b> | APP CRS<br><b>219°</b> | Rwy Idg<br>TDZE<br>Apt Elev | <b>4000</b><br><b>963</b><br><b>963</b> |
|--|------------------------|-----------------------------|---|

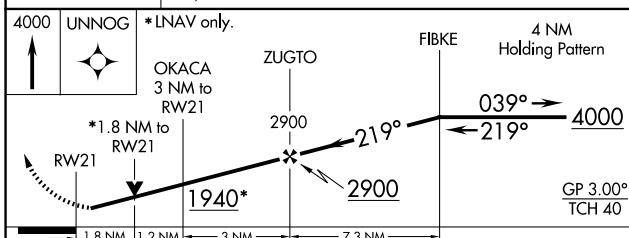
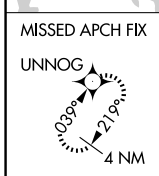
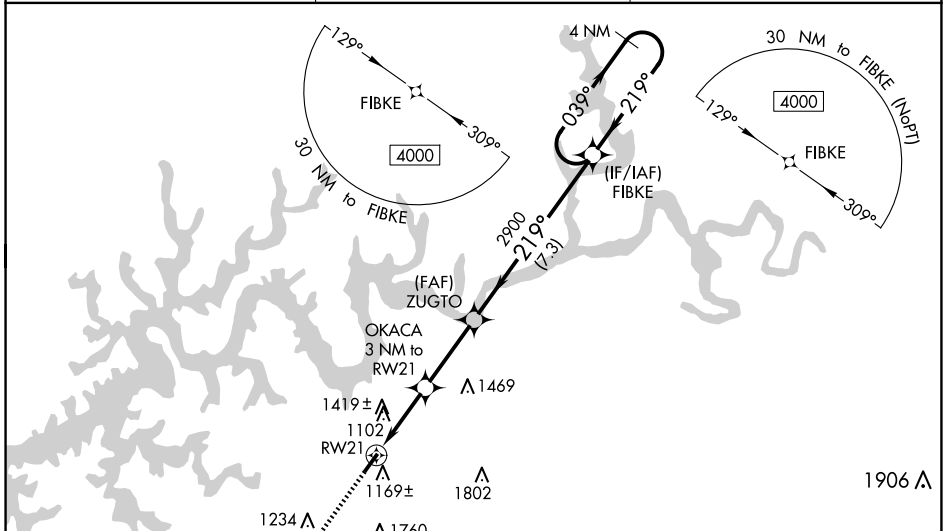
# RNAV (GPS) RWY 21

WAYNE COUNTY (EKQ)

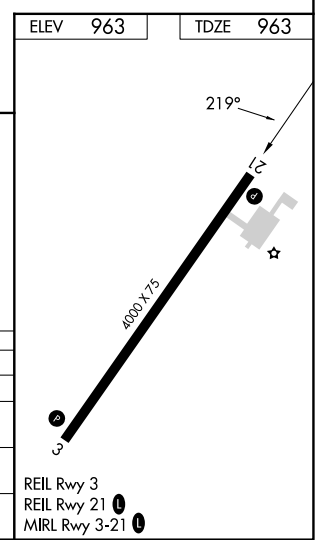
**⚠** Baro-VNAV NA when using Somerset altimeter setting. For uncompensated Baro-VNAV systems, LNAV/VNAV NA below -16°C (4°F) or above 54°C (130°F). DME/DME RNP-0.3 NA. VDP NA with Somerset altimeter setting. Helicopter visibility reduction below ¾ SM NA. When local altimeter setting not received, use Somerset altimeter setting and increase all DA 44 feet, and all MDA 60 feet; increase LPV all Cats visibility ½ mile and LNAV/VNAV all Cats visibility ½ mile. Night landing: Rwy 3 NA.

**MISSED APPROACH:** Climb to 4000 direct UNNOG and hold.

|                            |   |                               |
|----------------------------|---|-------------------------------|
| AWOS-3PT<br><b>118.825</b> | INDIANAPOLIS CENTER<br><b>124.625 371.925</b> | UNICOM<br><b>122.8 (CTAF)</b> |
|----------------------------|---|-------------------------------|



| CATEGORY          | A                       | B                       | C | D  |
|-------------------|-------------------------|-------------------------|---|----|
| LPV DA            | 1257-1                  | 294 (300-1)             |   | NA |
| LNAV/VNAV DA      | 1666-2½                 | 703 (800-2½)            |   | NA |
| LNAV MDA          | 1580-1                  | 617 (700-1)             |   | NA |
| <b>C</b> CIRCLING | 1780-1¼<br>817 (900-1¼) | 1840-1¼<br>877 (900-1¼) |   | NA |



SE-1, 23 JAN 2025 to 20 FEB 2025

SE-1, 23 JAN 2025 to 20 FEB 2025