

WAAS CH <b>69245</b> <b>W19A</b>	APP CRS <b>190°</b>	Rwy Idg <b>5406</b> TDZE <b>909</b> Apt Elev <b>909</b>
--	------------------------	---

# RNAV (GPS) RWY 19

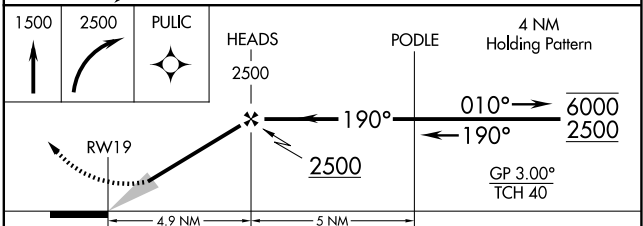
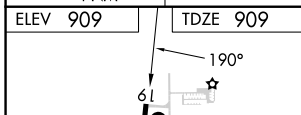
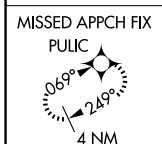
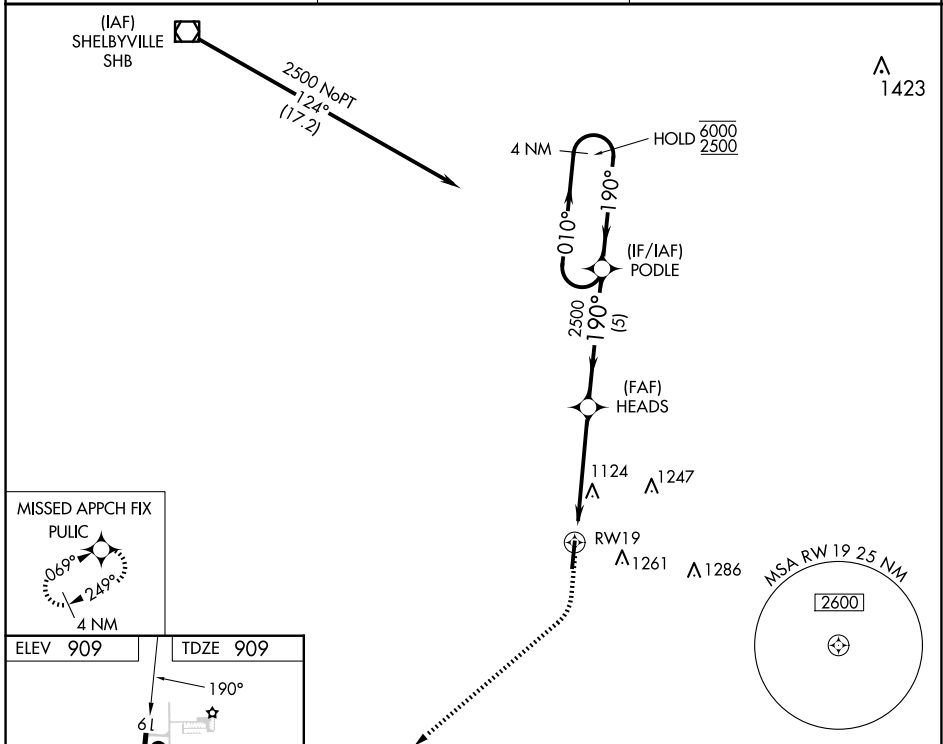
GREENSBURG MUNI (I34)

RNP APCH - GPS.

**Baro-VNAV NA.** Use Columbus Muni altimeter setting, when not received, use Indianapolis Int'l altimeter setting: increase LPV DA to 1327 feet and all visibilities  $\frac{1}{8}$  SM; increase LNAV/VNAV DA to 1419 feet; increase all MDAs 40 feet and Circling visibility Cat C  $\frac{1}{4}$  SM.

**MISSED APPROACH:** Climb to 1500 then climbing right turn to 2500 direct PULIC and hold.

BAK AWOS-3 <b>119.75</b>	INDIANAPOLIS APP CON <b>127.15</b>	CTAF <b>122.9</b>
-----------------------------	---------------------------------------	----------------------



1500	2500	PULIC	HEADS	PODLE	4 NM Holding Pattern
↑	↷	✦	2500	↷	↷
RWY 19		↷	↷	↷	↷
4.9 NM		5 NM		↷	↷
CATEGORY	A	B	C	D	
LPV DA	1288-1		379 (400-1)	NA	
LNAV/VNAV DA	1380-1 $\frac{1}{8}$		471 (500-1 $\frac{1}{8}$ )	NA	
LNAV MDA	1500-1	591 (600-1)	1500-1 $\frac{3}{4}$ 591 (600-1 $\frac{3}{4}$ )	NA	
CIRCLING	1540-1 631 (700-1)	1640-1 731 (800-1)	1640-2 731 (800-2)	NA	

MIRL Rwy 1-19  
REIL Rws 1 and 19

EC-2, 23 JAN 2025 to 20 FEB 2025

EC-2, 23 JAN 2025 to 20 FEB 2025