

WAAS CH <b>93718</b> <b>W19A</b>	APP CRS <b>187°</b>	Rwy Idg TDZE <b>441</b> Apt Elev <b>441</b>
--	------------------------	---

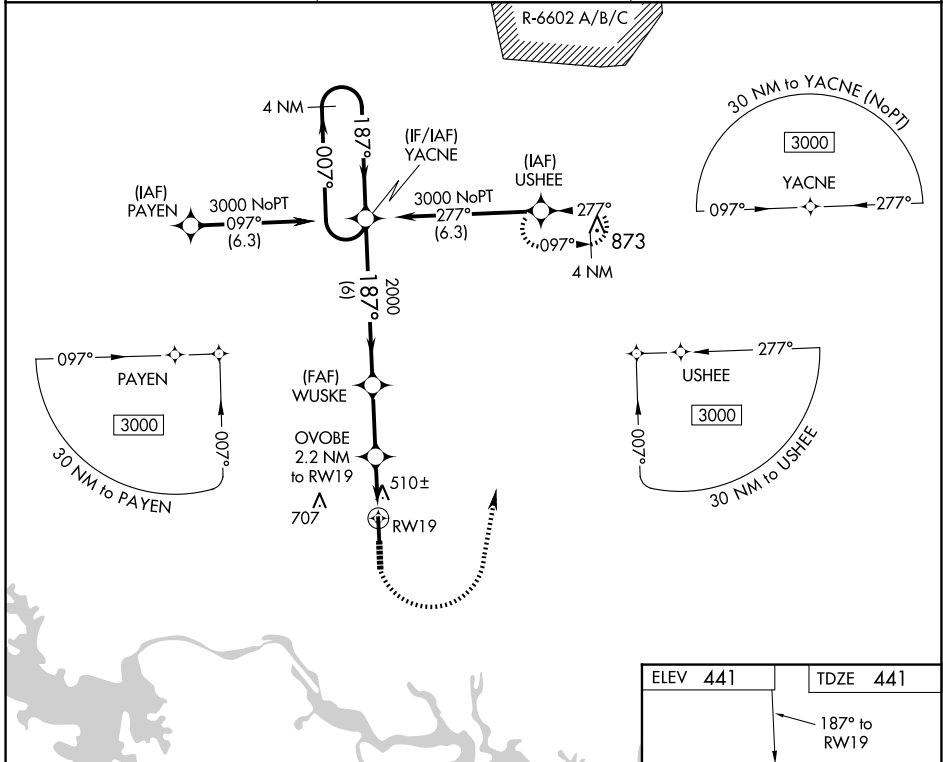
# RNAV (GPS) RWY 19

MECKLENBURG-BRUNSWICK RGNL (AVC)

**▼** For uncompensated Baro-VNAV systems, LNAV/VNAV NA below -1.5°C (5°F) or above 54°C (130°F). DME/DME RNP-0.3 NA. Rwy 19 helicopter visibility reduction below ¾ SM NA.

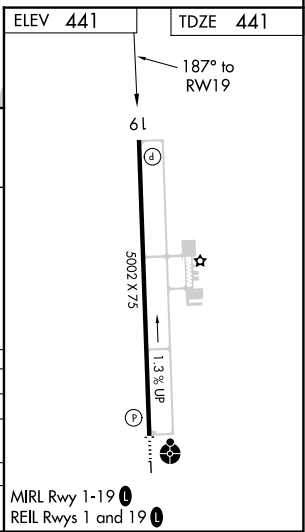
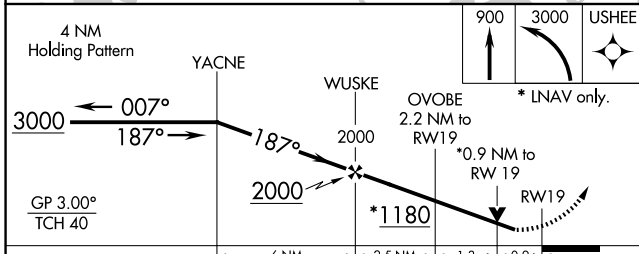
MISSED APPROACH: Climb to 900 then climbing left turn to 3000 direct USHEE and hold.

AWOS-3 <b>127.525</b>	WASHINGTON CENTER <b>118.75 377.1</b>	UNICOM <b>122.8 (CTAF) 0</b>
--------------------------	--	---------------------------------



NE-3, 23 JAN 2025 to 20 FEB 2025

NE-3, 23 JAN 2025 to 20 FEB 2025



CATEGORY	A	B	C	D
LPV DA		691-1	250 (300-1)	
LNAV/VNAV DA		710-1	269 (300-1)	
LNAV MDA		760-1	319 (400-1)	
<b>CIRCLING</b>	860-1 419 (500-1)	900-1 459 (500-1)	1060-1 ¾ 619 (700-1¾)	1060-2 619 (700-2)

MIRL Rwy 1-19 **0**  
REL Rwys 1 and 19 **0**