

APP CRS 051°	Rwy Idg 2500
	TDZE 1209
	Apt Elev 1209

RNAV (GPS) RWY 4

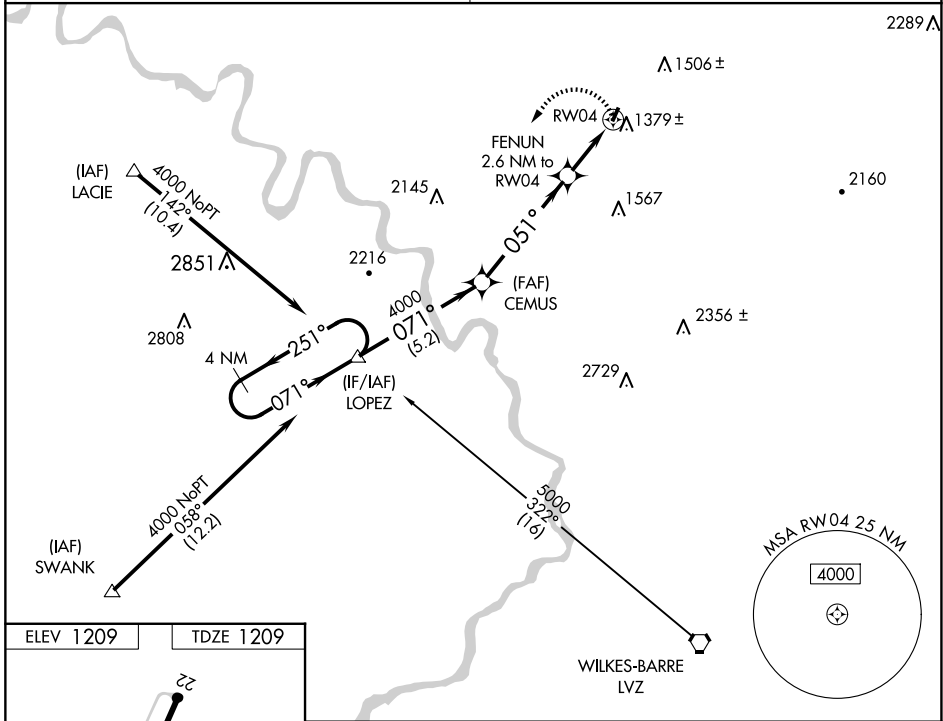
SEAMANS FLD (9N3)

▼ DME/DME RNP-0.3 NA.
▲ NA Obtain local altimeter setting on CTAF; when not received, use Wilkes-Barre/Scranton Intl altimeter setting.
 VDP NA when using Wilkes-Barre/Scranton Intl altimeter setting.

MISSED APPROACH: Climbing left turn to 4000 direct LOPEZ and hold.

WILKES-BARRE APP CON **120.95 256.7**

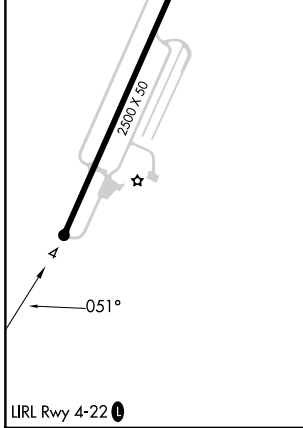
UNICOM **122.7 (CTAF) 0**



NE-4, 23 JAN 2025 to 20 FEB 2025

NE-4, 23 JAN 2025 to 20 FEB 2025

ELEV 1209	TDZE 1209
-----------	-----------



	4000	LOPEZ	△
	4000	071°	051°
	2180	3.49°	TCH 40
	5.2 NM	4.9 NM	1.5 NM
	1.1 NM	1.1 NM	
CATEGORY	A	B	C D
LNAV MDA	1640-1	431 (500-1)	NA
CIRCLING	1720-1 511 (600-1)	1780-1 571 (600-1)	NA
WILKES-BARRE/SCRANTON INTL ALTIMETER SETTING MINIMUMS			
LNAV MDA	1720-1	511 (600-1)	NA
CIRCLING	1800-1 591 (600-1)	1860-1 651 (700-1)	NA