

LOC/DME I-JFX 108.9 Chan 26	APP CRS 273°	Rwy Idg TDZE Apt Elev	4800 481 483
--	------------------------	-----------------------------	---

ILS or LOC RWY 27

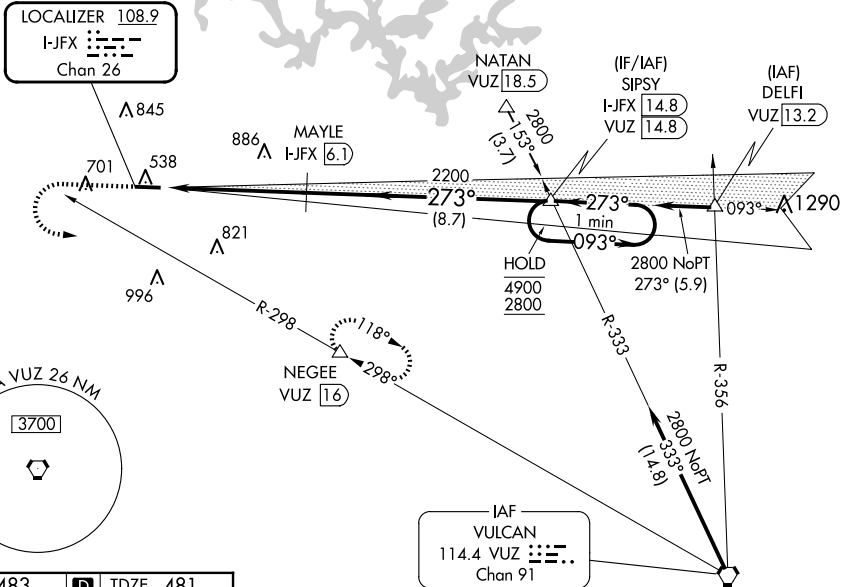
WALKER COUNTY/BEVILL FLD (JFX)

DME required.

NA Rwy 27 helicopter visibility reduction below 3/4 SM NA. VDP NA when using Birmingham altimeter setting. When local altimeter setting not received, use Birmingham altimeter setting; increase DA to 892 feet and S-ILS all Cats visibilities 1/4 SM; increase all MDAs 120 feet and S-LOC Cats C and D and Circling Cats C and D visibility 1/4 SM.

MISSED APPROACH: Climb to 1500 then climbing left turn to 3000 on VUZ VORTAC R-298 to NEGEE/16 DME and hold.

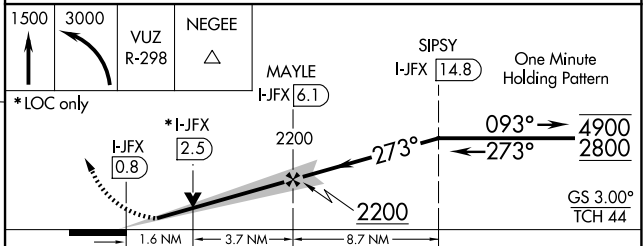
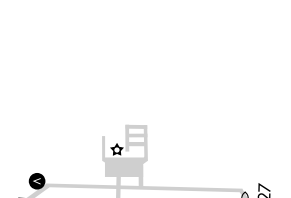
AWOS-3PT 119.225	BIRMINGHAM APP CON 127.675 338.2	GCO 121.725	UNICOM 123.075 (CTAF) 0
----------------------------	--	-----------------------	-----------------------------------



SE-4, 23 JAN 2025 to 20 FEB 2025

SE-4, 23 JAN 2025 to 20 FEB 2025

ELEV 483	D	TDZE 481
----------	----------	----------



CATEGORY	A	B	C	D
S-ILS 27	788-7/8		307 (400-7/8)	
S-LOC 27	1040-1 559 (600-1)		1040-1 5/8 559 (600-1 5/8)	
C CIRCLING	1040-1 557 (600-1)	1080-1 597 (600-1)	1160-2 677 (700-2)	1360-2 3/4 877 (900-2 3/4)

MIRL Rwy 9-27
REIL Rwy 9 and 27