

WAAS Ch 93725 W09A	APP CRS 093°	Rwy Idg 4800 TDZE 483 Apt Elev 483
--	------------------------	---

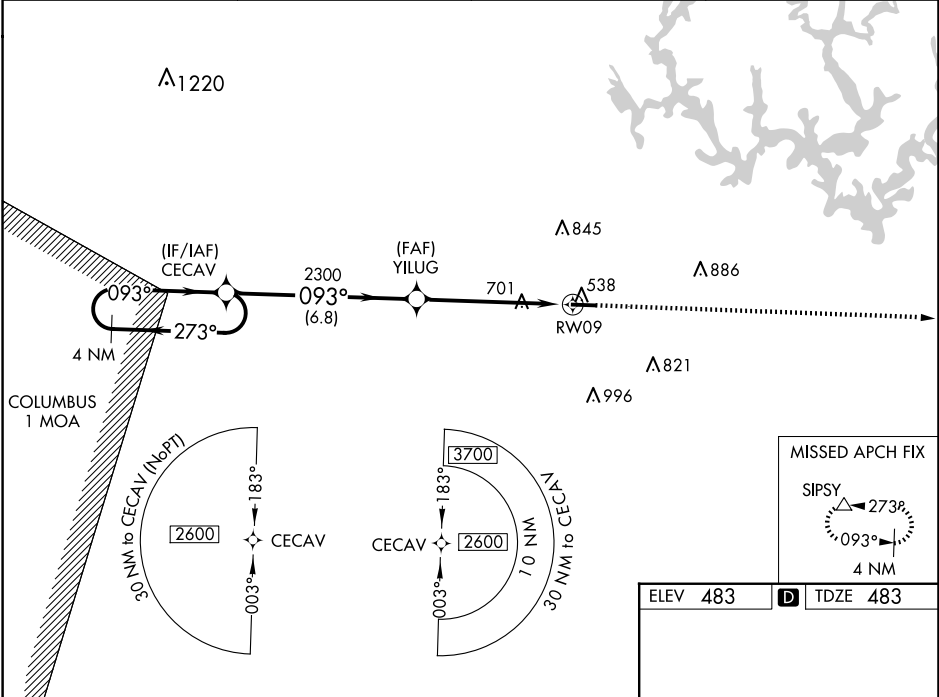
RNAV (GPS) RWY 9

WALKER COUNTY/BEVILL FLD (JFXX)

⚠ Baro-VNAV NA when using Birmingham altimeter setting. For uncompensated Baro-VNAV systems, LNAV/VNAV NA below -15°C (5°F) or above 40°C (104°F). DME/DME RNP-0.3 NA. Helicopter visibility reduction below 1 SM NA. When local altimeter setting not received, use Birmingham altimeter setting and increase all DA 104 feet and all MDA 120 feet; increase LPV all Cats, LNAV Cats C/D and Circling Cat D visibility ¼ mile increase LNAV/VNAV all Cats and Circling Cat C visibility ⅓ mile.

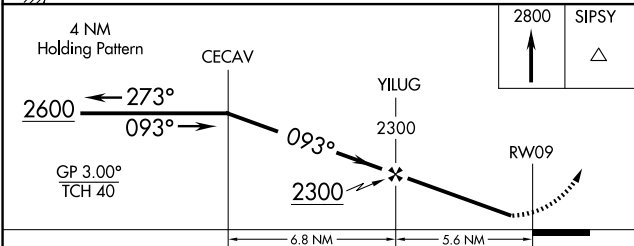
MISSED APPROACH:
Climb to 2800 direct SIPSY and hold.

AWOS-3PT 119.225	BIRMINGHAM APP CON 127.675 338.2	GCO 121.725	UNICOM 123.075 (CTAF) 0
----------------------------	--	-----------------------	-----------------------------------

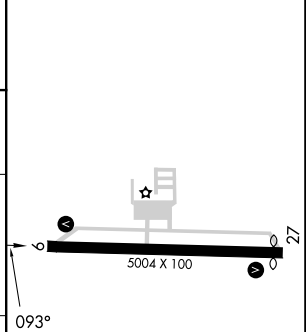


SE-4, 23 JAN 2025 to 20 FEB 2025

SE-4, 23 JAN 2025 to 20 FEB 2025



ELEV 483	D TDZE 483
----------	-------------------



CATEGORY	A	B	C	D
LPV DA		751-1	268 (300-1)	
LNAV/VNAV DA		952-1½	469 (500-1½)	
LNAV MDA	1040-1	557 (600-1)	1040-1½	557 (600-1½)
CIRCLING	1040-1 557 (600-1)	1080-1 597 (600-1)	1160-2 677 (700-2)	1360-2¾ 877 (900-2¾)

MIRL Rwy 9-27 **0**
REIL Rws 9 and 27 **0**