

VORTAC VUZ 114.4 Chan 91	APP CRS 302°	Rwy Idg TDZE Apt Elev	N/A N/A 483
--	------------------------	-----------------------------	--

VOR/DME-A
WALKER COUNTY/BEVILL FLD (JF'X)



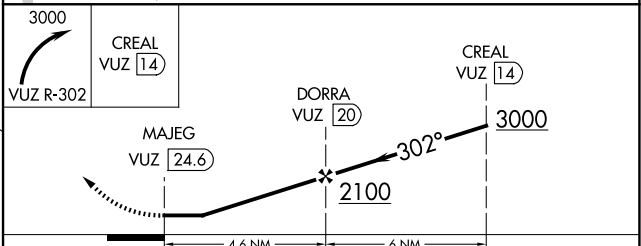
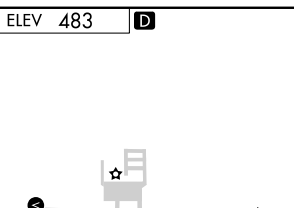
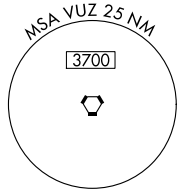
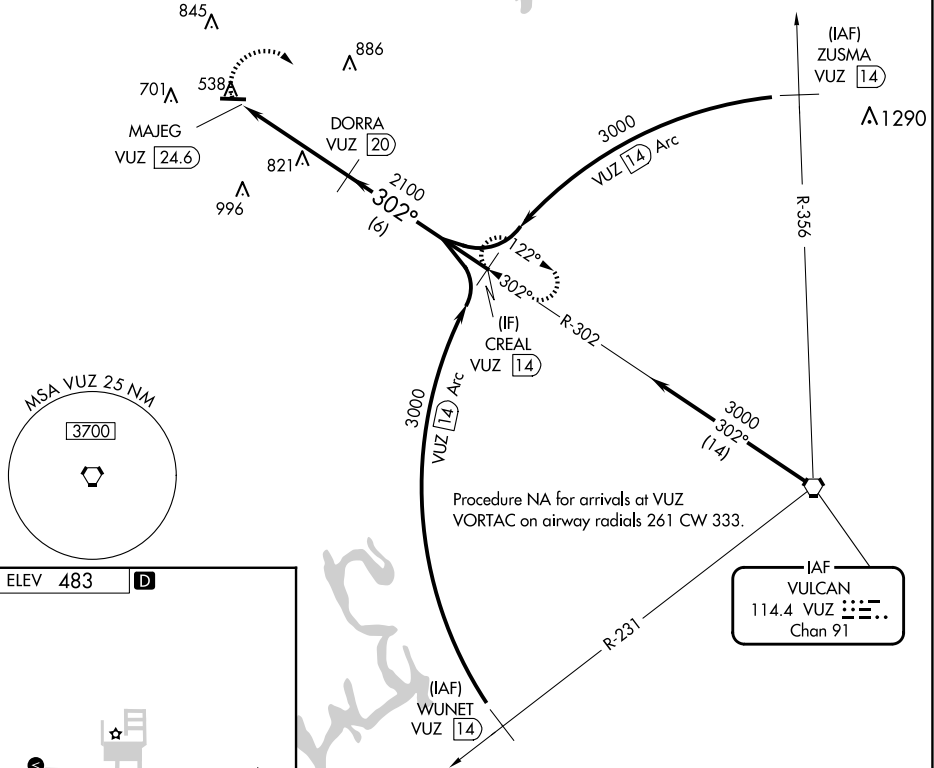
When local altimeter setting not received, use Birmingham altimeter setting and increase all MDA 120 feet and Cat C/D visibility 1/4 mile.

MISSED APPROACH: Climbing right turn to 3000 on VUZ VORTAC R-302 to CREAL/14 DME and hold.

AWOS-3PT 119.225	BIRMINGHAM APP CON 127.675 338.2	GCO 121.725	UNICOM 123.075 (CTAF) 1
----------------------------	--	-----------------------	--

SE-4, 23 JAN 2025 to 20 FEB 2025

SE-4, 23 JAN 2025 to 20 FEB 2025



CATEGORY	A	B	C	D
CIRCLING	1160-1 677 (700-1)	1160-1/4 677 (700-1/4)	1160-2 677 (700-2)	1360-2 3/4 877 (900-2 3/4)

MIRL Rwy 9-27 **1**
REIL Rwy 9 and 27 **1**