

WAAS CH 72841 W21A	APP CRS 200°	Rwy Idg TDZE Apt Elev	4400 18 18
--	------------------------	-----------------------------	---------------------------------------

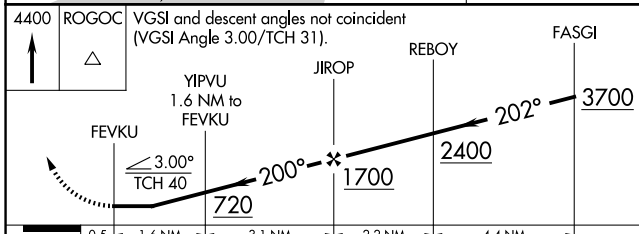
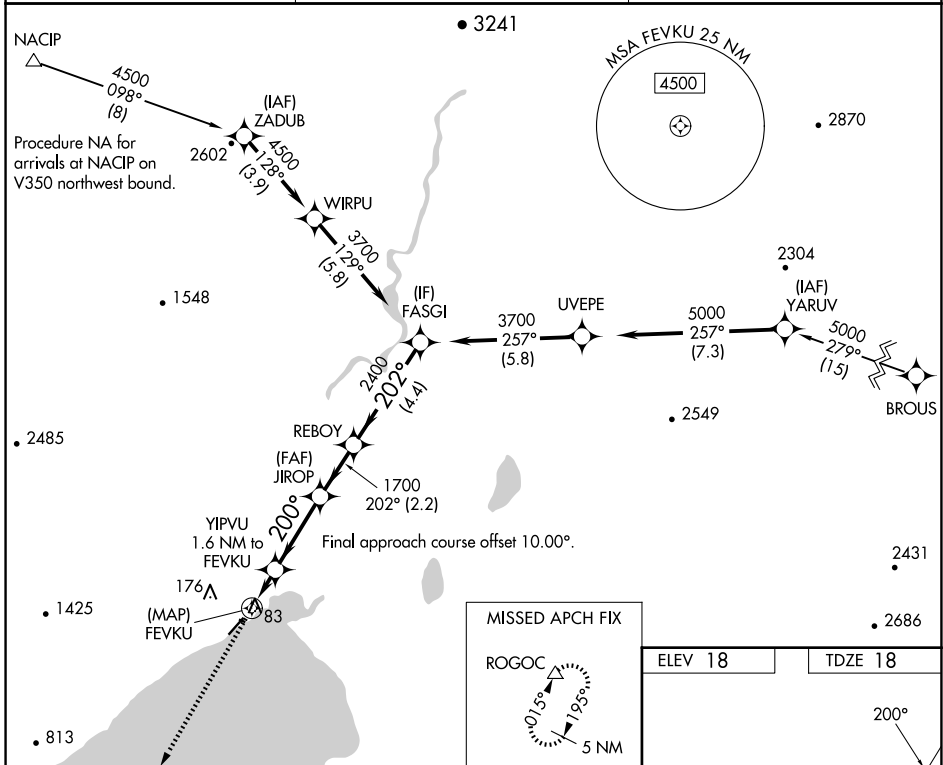
RNAV (GPS) RWY 21

TOGIAK (TOG)(PATG)

⚠ Circling NA northwest of Rwy 3-21.
⚠ Rwy 21 helicopter visibility reduction below 1 SM NA.
 DME/DME RNP-0.3 NA. Procedure NA at night.

MISSED APPROACH: Climb to 4400
 direct ROGOC and hold, continue
 climb-in-hold to 4400.

AWOS-3P 119.3	ANCHORAGE CENTER 132.75 282.35	CTAF 122.5
-------------------------	--	----------------------



ELEV 18	TDZE 18
---------	---------

0.5	1.6 NM	3.1 NM	2.2 NM	4.4 NM
CATEGORY	A	B	C	D
LP MDA		340-1	322 (400-1)	
LNAV MDA		340-1	322 (400-1)	
C CIRCLING	400-1 382 (400-1)	480-1 462 (500-1)	480-1½ 462 (500-1½)	800-2½ 782 (800-2½)

MIRL Rwy 3-21

AK, 26 DEC 2024 to 20 FEB 2025

AK, 26 DEC 2024 to 20 FEB 2025