

APP CRS	Rwy Idg	<b>3900</b>
<b>046°</b>	TDZE	<b>989</b>
	Apt Elev	<b>989</b>

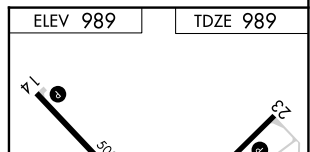
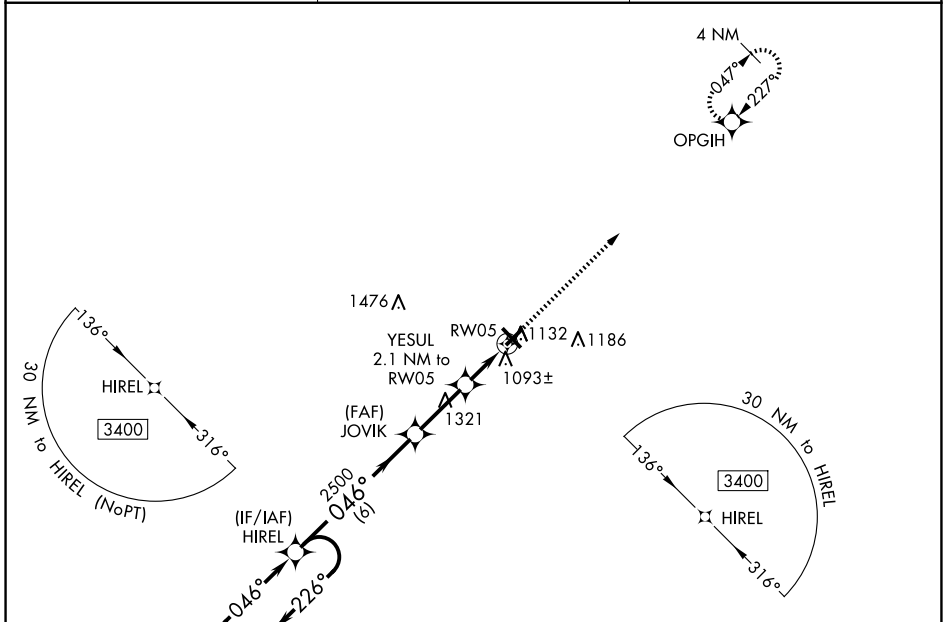
# RNAV (GPS) RWY 5

BURNETT COUNTY (RZN)

**⚠** DME/DME RNP-0.3 NA. Helicopter visibility reduction below 1 SM NA.  
**⚠** Night Landing: Rwy 5, 23, 32 NA. When local altimeter setting not received, use Rush City, MN altimeter setting and increase all MDA 80 feet; increase LNAV Cat C/D visibility 3/8 mile, and Circling Cat C/D visibility 1/4 mile.

MISSED APPROACH: Climb to 3400 direct OPGIH and hold.

AWOS-3 <b>118.325</b>	MINNEAPOLIS CENTER <b>121.05 235.775</b>	UNICOM <b>122.8 (CTAF)</b> <b>📶</b>
--------------------------	---	--



4 NM Holding Pattern	HIREL	VGSI and descent angles not coincident (VGSI Angle 3.50/TCH 31).	3400	OPGIH
3400	← 226°	046° →	2500	JOVIK
		046°	1680	YESUL 2.1 NM to RW05
		3.00° TCH 40		RW05
	6 NM	2.5 NM	2.1 NM	

CATEGORY	A	B	C	D
LNAV MDA	1360-1 371 (400-1)			
<b>📶</b> CIRCLING	1440-1	451 (500-1)	1540-1½ 551 (600-1½)	1680-2¼ 691 (700-2¼)

ELEV 989	TDZE 989
----------	----------

REIL Rws 5, 14, 23 and 32 **📶**  
 MRL Rws 5-23 and 14-32 **📶**

EC-3, 23 JAN 2025 to 20 FEB 2025

EC-3, 23 JAN 2025 to 20 FEB 2025