

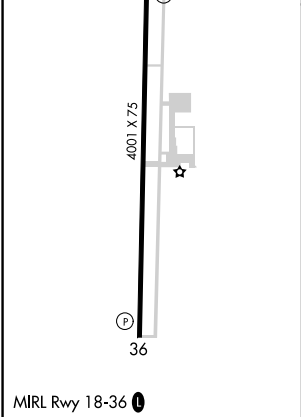
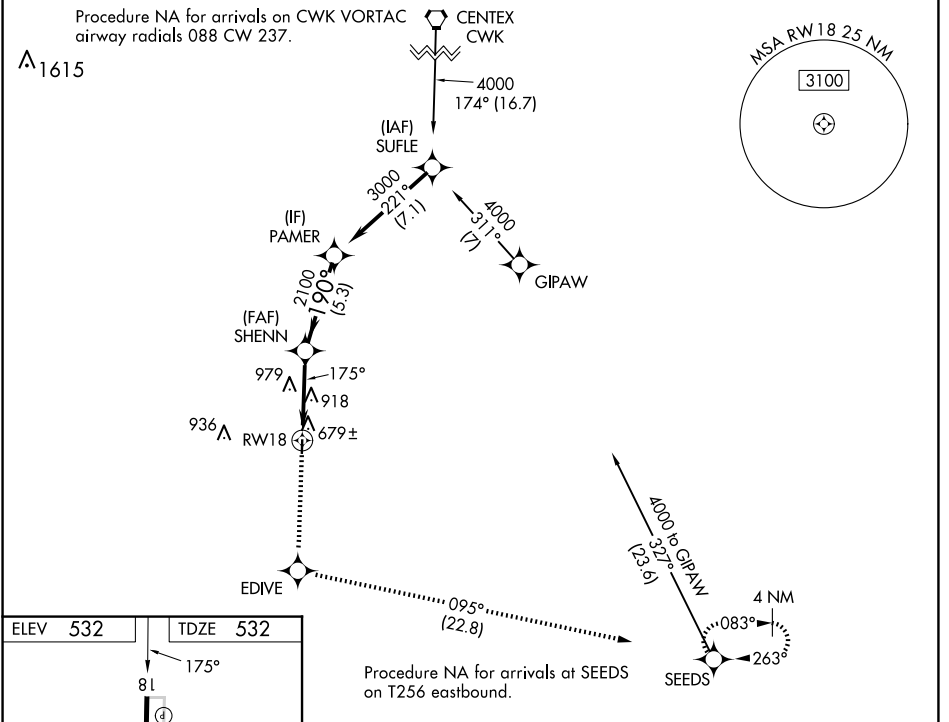
WAAS CH <b>45922</b> <b>W18A</b>	APP CRS <b>175°</b>	Rwy Idg TDZE Apt Elev	<b>4001</b> <b>532</b> <b>532</b>
--	------------------------	-----------------------------	---

# RNAV (GPS) RWY 18

LOCKHART MUNI (50R)

RNP APCH.	<p><b>▽</b> Baro-VNAV NA. Use San Marcos altimeter setting, when not received, <b>▲</b> NA use Austin-Bergstrom Intl altimeter setting and increase all DA 16 feet, all MDA 20 feet; increase LNAV Cat B visibility ¼ SM.</p>	<p>MISSED APPROACH: Climb to 4000 direct EDIVE and on track 095° to SEEDS and hold.</p>
-----------	---	---

<p>AUSTIN APP CON <b>120.875 270.25</b></p>	<p>UNICOM <b>122.8 (CTAF) 0</b></p>
---	---



Procedure NA for arrivals at SEEDS  
on T256 eastbound.

4000	EDIVE	tr 095°	SEEDS	VGSI and RNAV glidepath not coincident (VGSI Angle 3.50/TCH 24).
CATEGORY	A	B	C	D
LPV DA	815-1 283 (300-1)			NA
LNAV/VNAV DA	883-1¼ 351 (400-1¼)			NA
LNAV MDA	1260-1 728 (800-1)		1260-2 728 (800-2)	NA

SC-3, 23 JAN 2025 to 20 FEB 2025

SC-3, 23 JAN 2025 to 20 FEB 2025