

WAAS CH 48931 W17A	APP CRS 174°	Rwy Idg TDZE Apt Elev	5000 105 105
--	------------------------	-----------------------------	---

RNAV (GPS) RWY 17

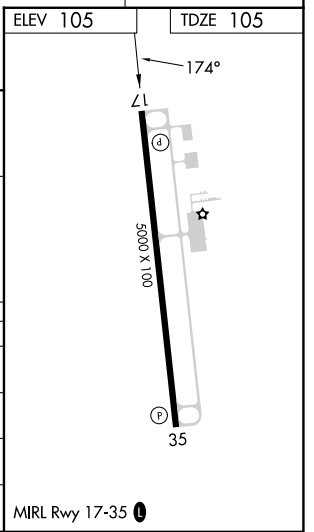
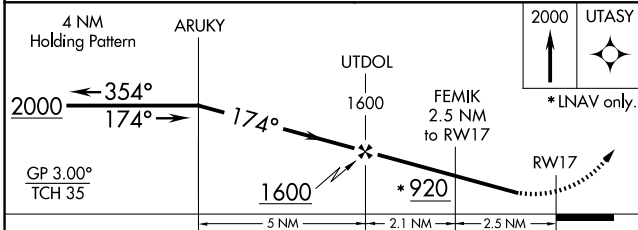
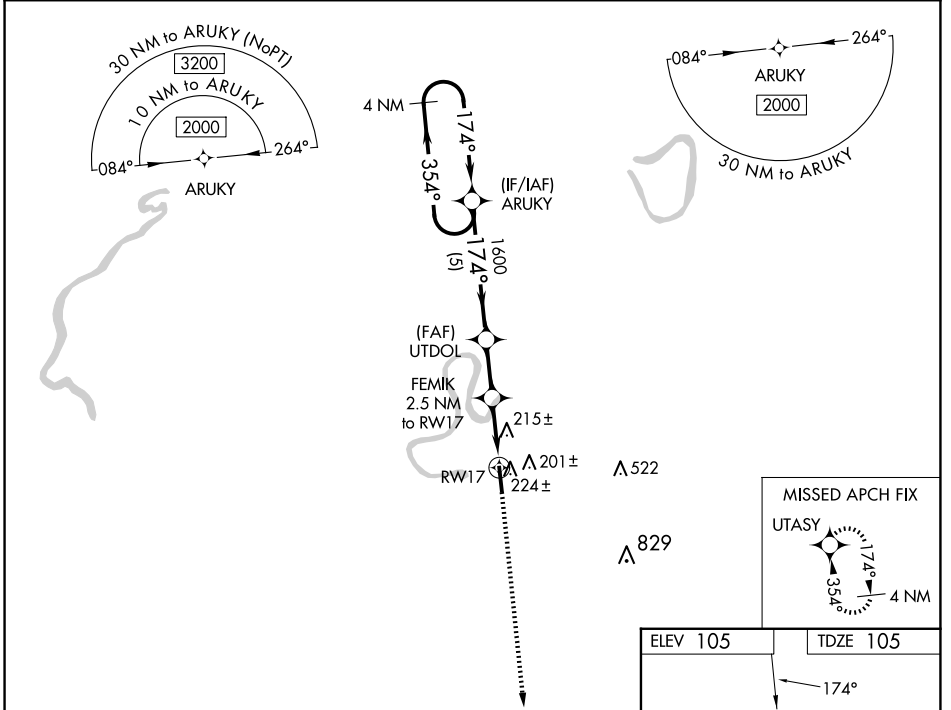
YAZOO COUNTY (87I)

NA Baro-VNAV NA. Use Madison altimeter setting; when not received, use Jackson altimeter setting and increase all DA 8 feet and all MDA 20 feet; increase LNAV/VNAV visibility all Cats 1/8 mile. DME/DME RNP-0.3 NA. Helicopter visibility reduction below 3/4 SM NA.

MISSED APPROACH: Climb to 2000 direct UTASY and hold.

MEMPHIS CENTER
132.5 259.1

UNICOM
122.8 (CTAF)



CATEGORY	A	B	C	D
LPV DA		461-1¼	356 (400-1¼)	
LNAV/VNAV DA		622-1¾	517 (600-1¾)	
LNAV MDA	580-1	475 (500-1)	580-1¾	475 (500-1¾)
CIRCLING	640-1	535 (600-1)	640-1½	960-2¾ 855 (900-2¾)

SC-4, 23 JAN 2025 to 20 FEB 2025

SC-4, 23 JAN 2025 to 20 FEB 2025