

APP CRS 281°	Rwy Idg 3705
	TDZE 686
	Apt Elev 686

RNAV (GPS) RWY 28

HARBOR SPRINGS (MGN)

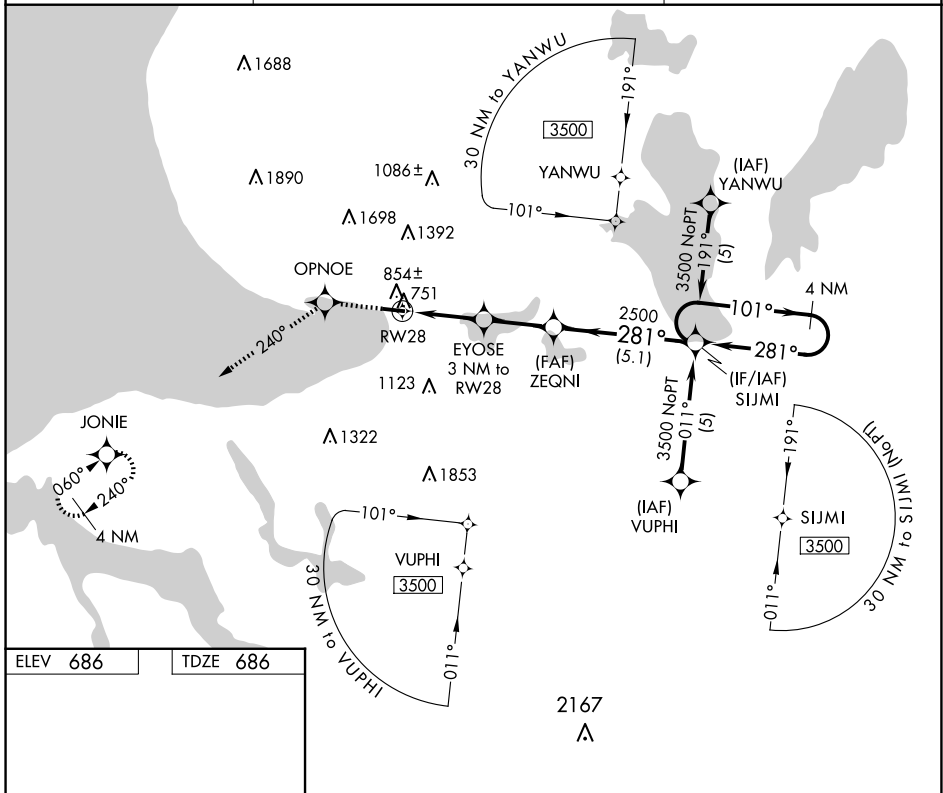
⚠ DME/DME RNP-0.3 NA. Helicopter visibility reduction below 1 SM NA. When local altimeter setting not received, use Pellsion altimeter setting and increase all MDAs 40 feet. Procedure NA at night.

MISSED APPROACH: Climb to 3400 direct OPNOE and via 240° track to JONIE and hold.

AWOS-3P
119.925

MINNEAPOLIS CENTER
134.6 354.05

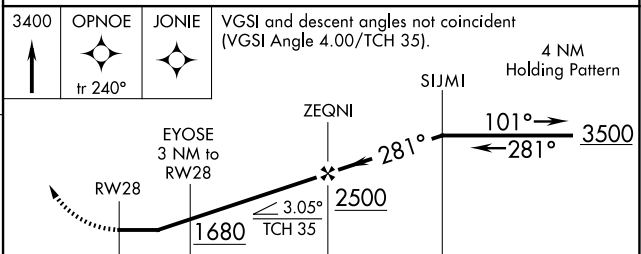
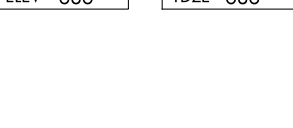
UNICOM
122.8 (CTAF)



EC-1, 23 JAN 2025 to 20 FEB 2025

EC-1, 23 JAN 2025 to 20 FEB 2025

ELEV 686	TDZE 686
----------	----------



CATEGORY	A	B	C	D
LNAV MDA	1120-1	434 (500-1)	NA	
CIRCLING	1380-1 694 (700-1)	1500-1¼ 814 (900-1¼)	NA	