

WAAS CH 53619 W28A	APP CRS 284°	Rwy Idg TDZE Apt Elev	4000 881 881
--	------------------------	-----------------------------	---

RNAV (GPS) RWY 28

FULTON COUNTY (NY)

RNP APCH - GPS.

▼ Rwy 28 helicopter visibility reduction below 3/4 SM NA. For uncompensated Baro-VNAV systems, LNAV/VNAV NA below -16°C or above 54°C.

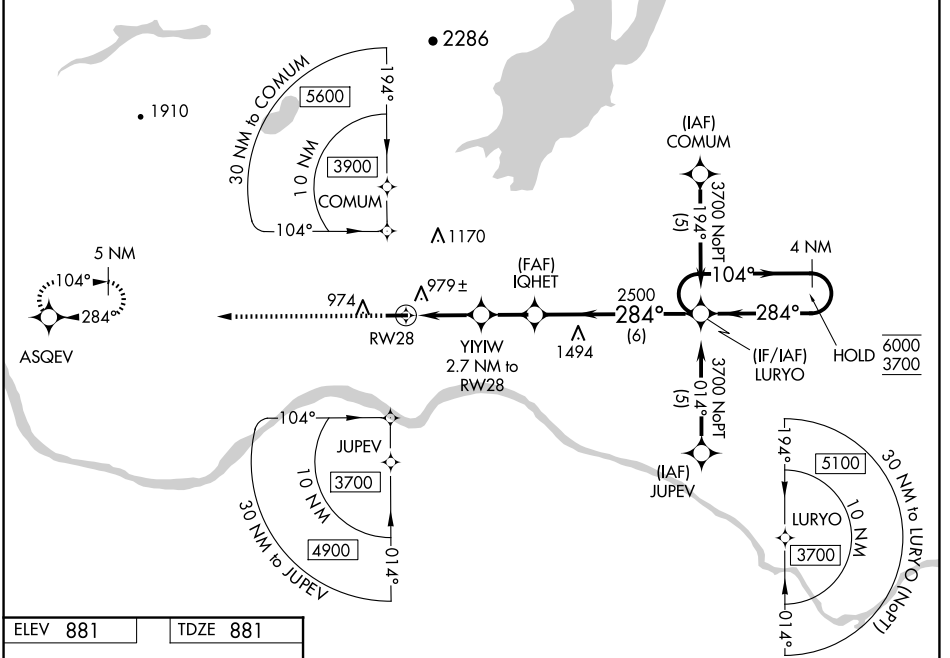
▲

MISSED APPROACH: Climb to 5000 direct ASQEV and hold, continue climb-in-hold to 5000.

AWOS-3
119.225

ALBANY APP CON
118.05

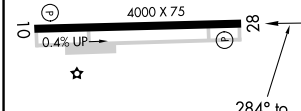
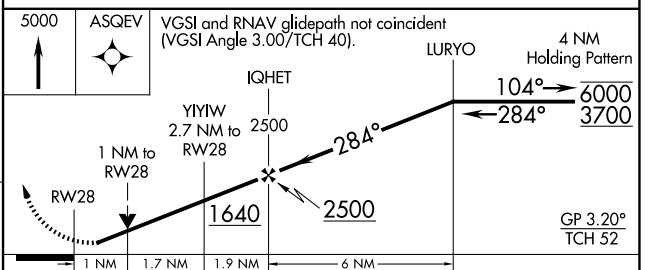
UNICOM
122.7 (CTAF) ①



NE-2, 23 JAN 2025 to 20 FEB 2025

NE-2, 23 JAN 2025 to 20 FEB 2025

ELEV 881	TDZE 881
----------	----------



CATEGORY	A	B	C	D
LPV DA	1131-3/4	250 (300-3/4)		NA
LNAV/VNAV DA	1141-3/4	260 (300-3/4)		NA
LNAV MDA	1240-1	359 (400-1)		NA
C CIRCLING	1280-1 399 (400-1)	1340-1 459 (500-1)		NA

MIRL Rwy 10-28 ①
REIL Rwy 10 and 28 ①