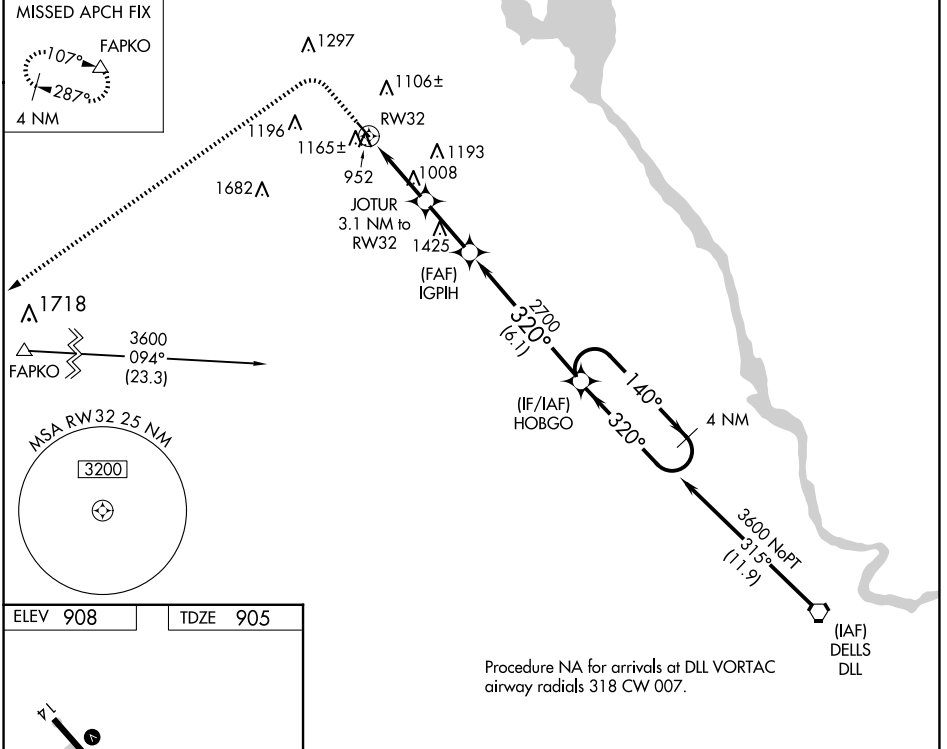


WAAS CH 49129 W32A	APP CRS 320°	Rwy Idg TDZE Apt Elev	3688 905 908
----------------------------------------	------------------------	-----------------------------	-----------------------------------------

RNAV (GPS) RWY 32

MAUSTON/NEW LISBON UNION (82C)

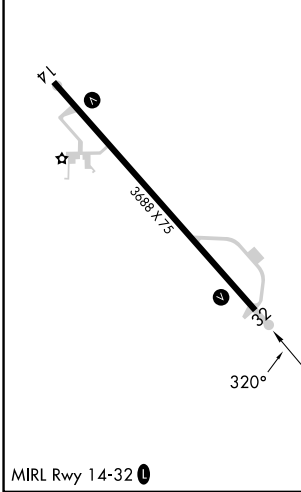
RNP APCH.		MISSED APPROACH: Climb to 1500 then climbing left turn to 4000 direct FAPKO and hold.
<p>▼ Use Volk Field altimeter setting; when not received use Wisconsin Dells altimeter setting and increase all MDA 60 feet and all Cat C visibilities ¼ mile. Procedure NA at night. Helicopter visibility reduction below 1 SM NA.</p>		
AWOS-3 123.925	VOLK APP CON ★ 135.25 244.875	CTAF 122.9 0



EC-3, 23 JAN 2025 to 20 FEB 2025

EC-3, 23 JAN 2025 to 20 FEB 2025

ELEV 908	TDZE 905
----------	----------



1500	4000	FAPKO	Visual Segment - Obstacles.	
↑	↶	△		
JOTUR 3.1 NM to RW32		IGPIH	HOBGO	
RW32	1920	2700	3600	
320°	320°	140°	320°	
3.1 NM	2.4 NM	6.1 NM		
CATEGORY	A	B	C	D
LP MDA	1280-1	375 (400-1)	1280-1½ 375 (400-1½)	NA
LNAV MDA	1440-1	535 (600-1)	1440-1½ 535 (600-1½)	NA