

APP CRS	Rwy Idg	4002
181°	TDZE	444
	Apt Elev	444

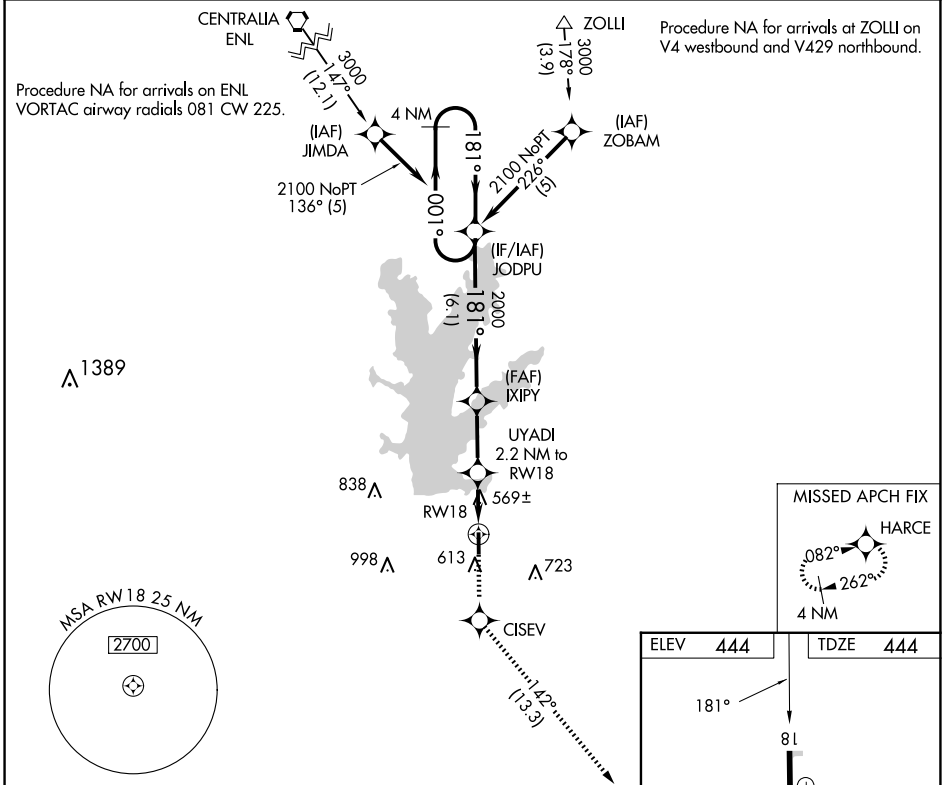
RNAV (GPS) RWY 18

BENTON MUNI (H96)

⚠ DME/DME RNP-0.3 NA. Rwy 18 helicopter visibility reduction below 3/4 SM NA.
⚠ Use Marion altimeter setting; when not received, use Mount Vernon altimeter setting and increase all MDA 20 feet and increase LNAV Cat C visibility to 1 1/4 mile. Circling Rwy 36 NA at night.

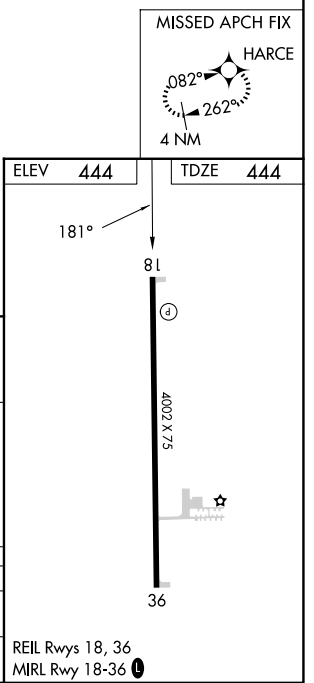
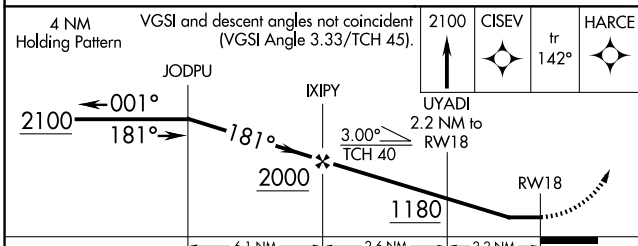
MISSED APPROACH: Climb to 2100 direct CISEV and on track 142° to HARCE and hold.

MWA AWOS-3PT 119.675	KANSAS CITY CENTER 127.475 346.275	UNICOM 122.8 (CTAF) 0
--------------------------------	--	---------------------------------



EC-3, 23 JAN 2025 to 20 FEB 2025

EC-3, 23 JAN 2025 to 20 FEB 2025



CATEGORY	A	B	C	D
LNAV MDA	860-1	416 (500-1)	860-1 1/8 416 (500-1 1/8)	NA
CIRCLING	1000-1	556 (600-1)	1120-2 676 (700-2)	NA