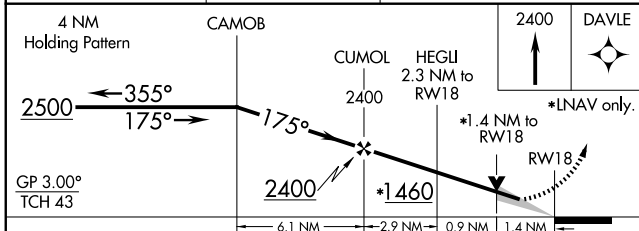
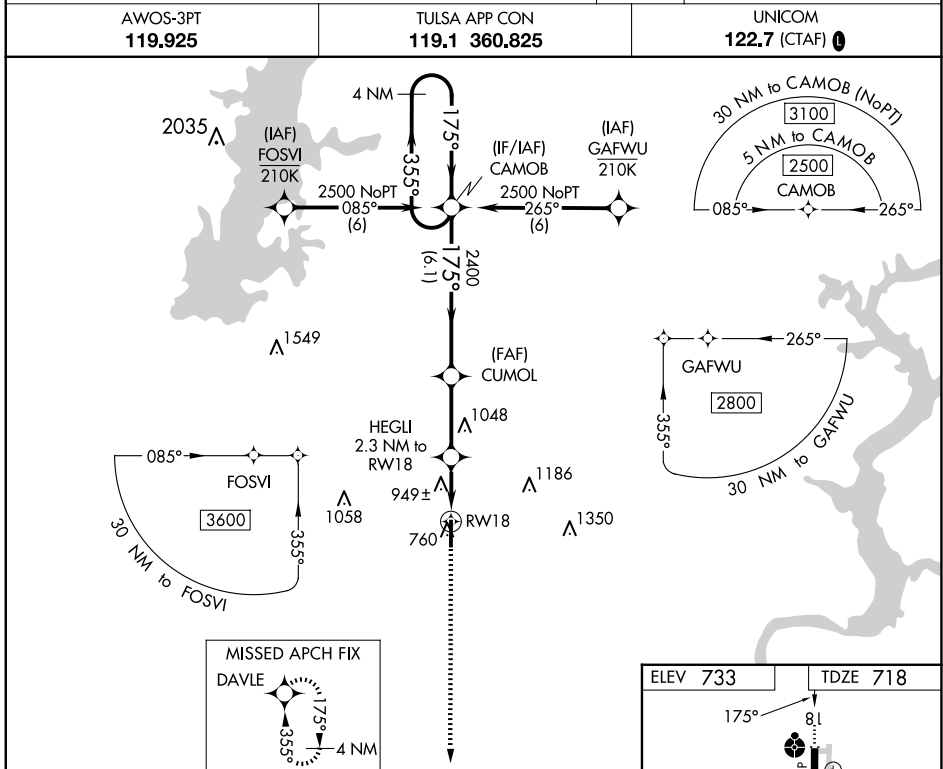


WAAS CH 63214 W18A	APP CRS 175°	Rwy Idg 5200 TDZE 718 Apt Elev 733
--	------------------------	---

RNAV (GPS) RWY 18

CLAREMORE RGNL (GCM)

<p>For uncompensated Baro-VNAV systems, LNAV/VNAV NA below -16°C (4°F) or above 54°C (130°F). DME/DME RNP-0.3 NA. For inop ALS, increase LNAV/VNAV Cats A/B visibility to 1% SM.</p>	ODALS 	MISSED APPROACH: Climb to 2400 direct DAVLE and hold.
	<p>AWOS-3PT 119,925</p> <p>TULSA APP CON 119.1 360,825</p> <p>UNICOM 122.7 (CTAF) 0</p>	



CATEGORY	A	B	C	D
LPV DA	968-3/4	250 (300-3/4)		NA
LNAV/VNAV DA	1281-1 1/2	563 (600-1 1/2)		NA
LNAV MDA	1200-3/4	482 (500-3/4)	1200-1 1/4 482 (500-1 1/4)	NA
C CIRCLING	1260-1	527 (600-1)	1380-1 3/4 647 (700-1 3/4)	NA

ELEV 733	TDZE 718
----------	----------

Vertical profile details:

- Start at 36 ft, climb 0.7% to 81 ft at DAVLE.
- Altitude 718 ft at RW18.
- Altitude 733 ft at CLAREMORE RGNL.
- Slope: 75 x 0005.

SC-1, 23 JAN 2025 to 20 FEB 2025

SC-1, 23 JAN 2025 to 20 FEB 2025