

VORTAC TUL <b>114.4</b> Chan <b>91</b>	APP CRS <b>060°</b>	Rwy Idg TDZE Apt Elev <b>N/A</b> <b>733</b>
--	------------------------	--

# VOR/DME-B

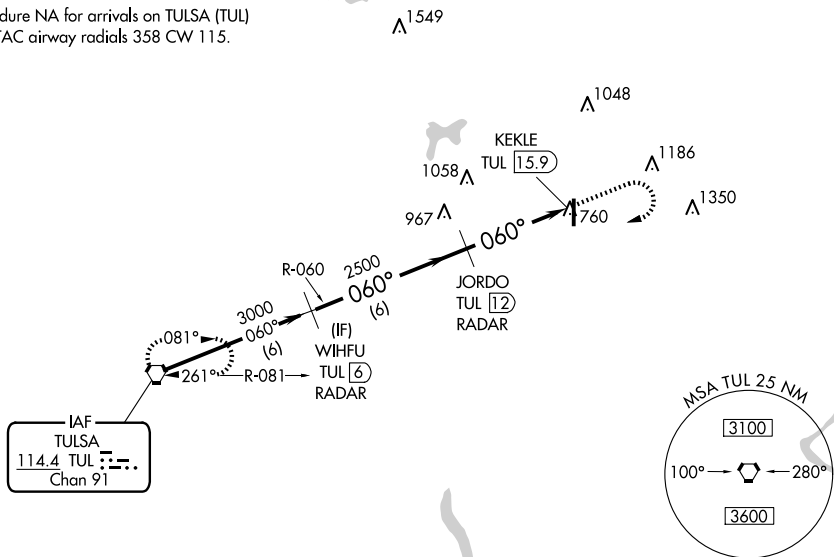
CLAREMORE RGNL (GCM)

**▽** If local altimeter setting not received, use Tulsa Intl altimeter setting and increase all MDAs 60 feet.

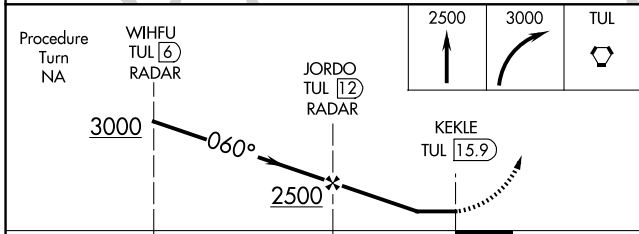
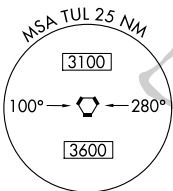
**MISSED APPROACH:** Climb to 2500 then climbing right turn to 3000 direct TUL VORTAC and hold.

AWOS-3PT <b>119.925</b>	TULSA APP CON <b>119.1 360.825</b>	UNICOM <b>122.7 (CTAF) 0</b>
----------------------------	---------------------------------------	---------------------------------

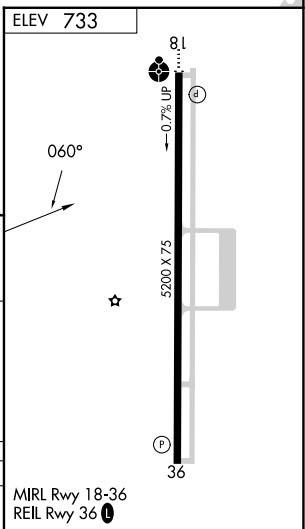
Procedure NA for arrivals on TULSA (TUL)  
VORTAC airway radials 358 CW 115.



IAF  
TULSA  
114.4 TUL  
Chan 91



CATEGORY	A	B	C	D
<b>C</b> CIRCLING	1260-1	527 (600-1)	1380-1 <sup>3</sup> / <sub>4</sub> 647 (700-1 <sup>3</sup> / <sub>4</sub> )	NA



SC-1, 23 JAN 2025 to 20 FEB 2025

SC-1, 23 JAN 2025 to 20 FEB 2025