

WAAS CH <b>48909</b> <b>W21A</b>	APP CRS <b>209°</b>	Rwy Idg TDZE <b>948</b> Apt Elev <b>948</b>	<b>5498</b> <b>948</b> <b>948</b>
--	------------------------	---	---

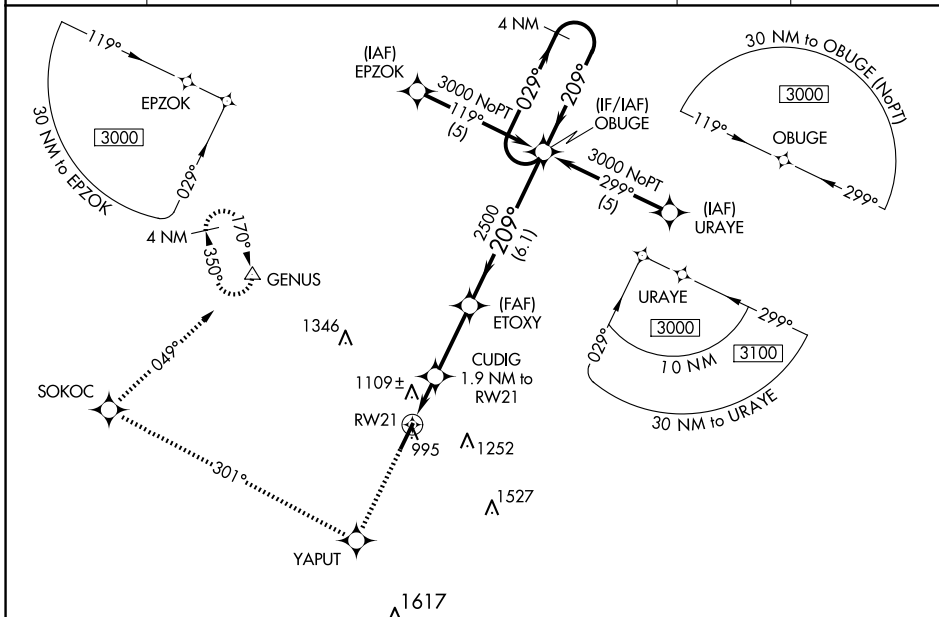
# RNAV (GPS) Z RWY 21

GEORGETOWN-SCOTT COUNTY RGNL (27K)

**NA** For uncompensated Baro-VNAV systems, LNAV/VNAV NA below -16° C (4° F) or above 46° C (114° F). DME/DME RNP-0.3 NA. When local altimeter setting not received, use Lexington altimeter setting and increase LPV DA to 1186, LNAV/VNAV DA to 1460, and all MDA 40 feet; increase LPV all Cats and LNAV Cats C/D and Circling Cat D visibility ¼ SM. Baro-VNAV and VDP NA with Lexington altimeter setting.

**MISSED APPROACH:** Climb to 3000 direct YAPUT and right turn on track 301° to SOKOC and right turn on track 049° to GENUS and hold.

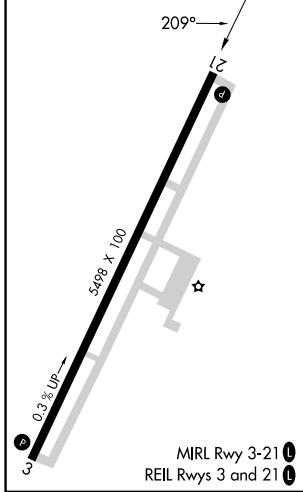
AWOS-3 <b>119,975</b>	LEXINGTON APP CON <b>120.15 259.3 (040° - 220°) 120.75 298.9 (221° - 039°)</b>	CLNC DEL <b>127,425</b>	UNICOM <b>123.0 (CTAF) 0</b>
--------------------------	---	----------------------------	---------------------------------



SE-1, 23 JAN 2025 to 20 FEB 2025

SE-1, 23 JAN 2025 to 20 FEB 2025

ELEV <b>948</b>	TDZE <b>948</b>
-----------------	-----------------



3000	YAPUT	SOKOC	GENUS	
↑	✧	↷ Ir 301°	↷ Ir 049°	△
OBUGE				
4 NM Holding Pattern				
*LNAV only.				
	CUDIG 1.9 NM to RW21	ETOXY 2500	3000	
	*1.2 NM to RW21	2500	← 209° →	
	RW21	*1580	GP 3.00° TCH 30	
	1.2 NM	0.7 NM	2.8 NM	6.1 NM
CATEGORY	A	B	C	D
LPV DA		1148-¾	200 (200-¾)	
LNAV/VNAV DA		1422-1¾	474 (500-1¾)	
LNAV MDA	1360-1	412 (500-1)	1360-1¼	412 (500-1¼)
CIRCLING	1420-1	472 (500-1)	1560-1¾ 612 (700-1¾)	1660-2¼ 712 (800-2¼)