

(GLAZY1.GLAZY) 23054

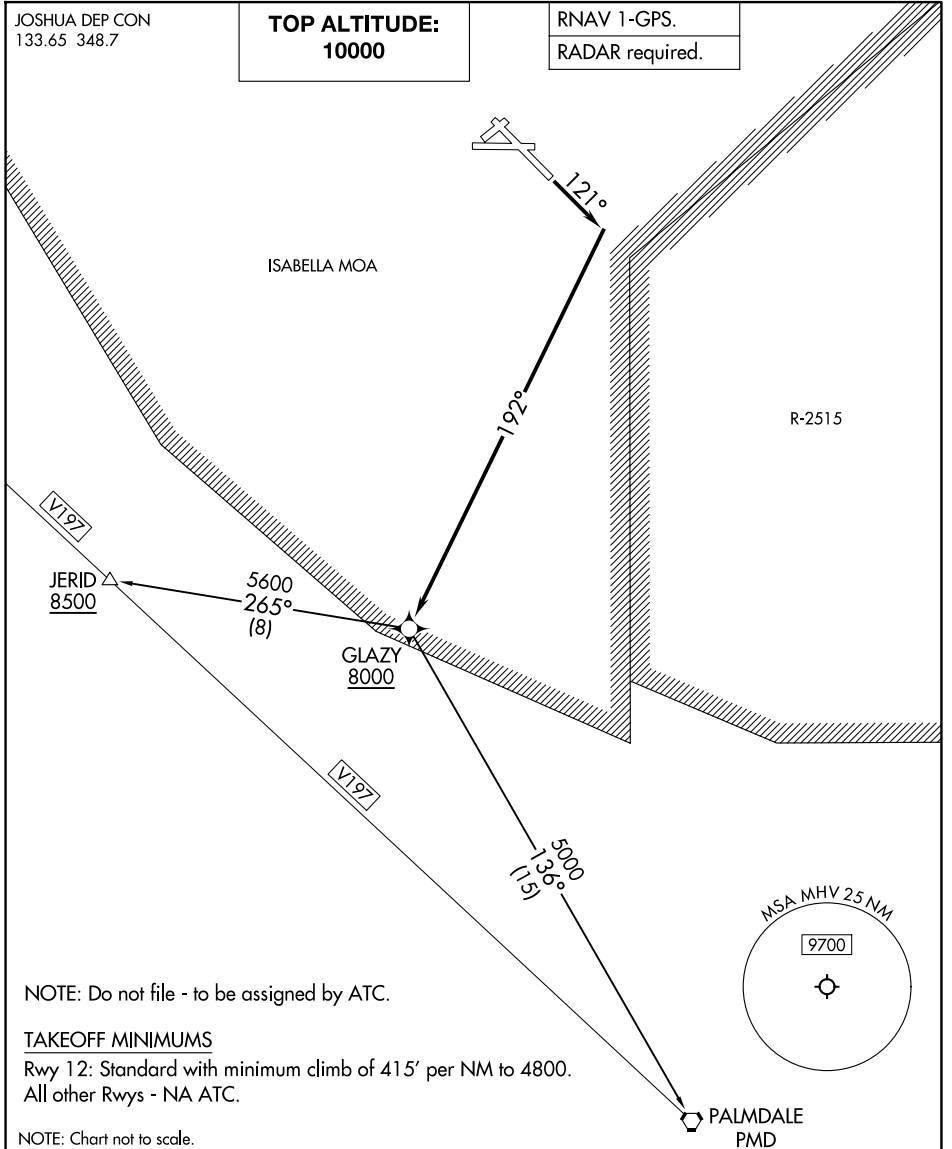
GLAZY ONE DEPARTURE (RNAV)

MOJAVE AIR & SPACE PORT/RUTAN FLD (MHV)
AL-9353 (FAA-O) MOJAVE, CALIFORNIA

JOSHUA DEP CON
133.65 348.7

**TOP ALTITUDE:
10000**

RNAV 1-GPS.
RADAR required.



SW-3, 23 JAN 2025 to 20 FEB 2025

SW-3, 23 JAN 2025 to 20 FEB 2025

NOTE: Do not file - to be assigned by ATC.

TAKEOFF MINIMUMS

Rwy 12: Standard with minimum climb of 415' per NM to 4800.
All other Rwy's - NA ATC.

NOTE: Chart not to scale.

DEPARTURE ROUTE DESCRIPTION

TAKEOFF RUNWAY 12: Climb on heading 121° to intercept course 192° to cross GLAZY at or above 8000, then on depicted route. Expect filed altitude 10 minutes after departure.

JERID TRANSITION (GLAZY1.JERID)

PALMDALE TRANSITION (GLAZY1.PMD)

GLAZY ONE DEPARTURE (RNAV)
(GLAZY1.GLAZY) 23FEB23

MOJAVE, CALIFORNIA
MOJAVE AIR & SPACE PORT/RUTAN FLD (MHV)