

WAAS CH <b>93602</b> <b>W20A</b>	APP CRS <b>196°</b>	Rwy Idg TDZE Apt Elev	<b>4001</b> <b>88</b> <b>98</b>
--	------------------------	-----------------------------	---------------------------------------

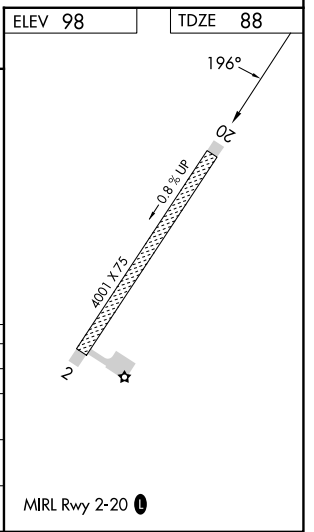
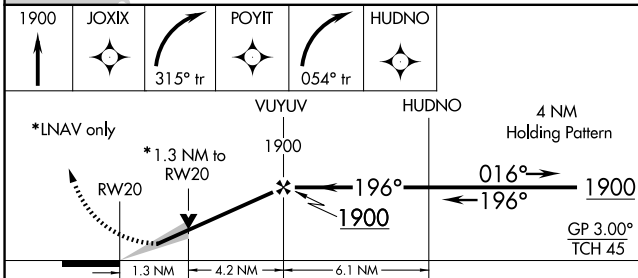
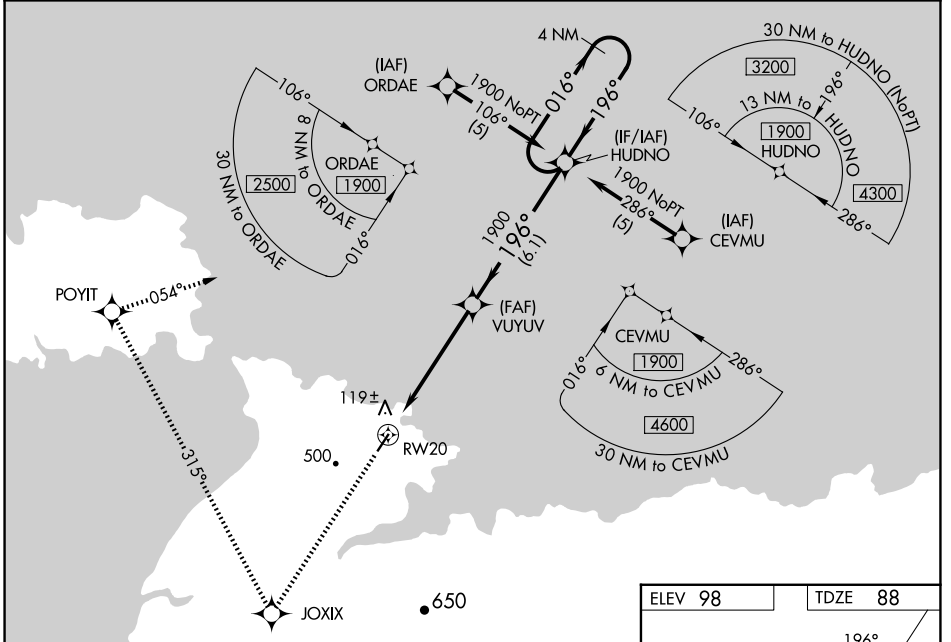
# RNAV (GPS) RWY 20

ST MICHAEL (SMK) (P.AMK)

**▼** If local altimeter setting not received, use Unalakeet altimeter setting and increase all DAs/MDAs 120 feet. Circling NA west of Rwy 2-20.  
**▲** DME/DME RNP-0.3 NA. Baro-VNAV NA when using Unalakeet altimeter setting. For uncompensated Baro-VNAV systems, LNAV/VNAV NA below -25°C (-13°F) or above 48°C (120°F).  
**▼** VDP NA with Unalakeet altimeter setting.

MISSED APPROACH: Climb to 1900 direct JOXIX and right turn via 315° track to POYIT and right turn via 054° track to HUDNO and hold.

AWOS-3P <b>119.275</b>	ANCHORAGE CENTER <b>135.7</b>	NOME RADIO <b>122.3</b>	UNICOM <b>122.8 (CTAF)</b> <b>①</b>
---------------------------	----------------------------------	----------------------------	--



CATEGORY	A	B	C	D
LPV DA		338-1	250 (300-1)	
LNAV/VNAV DA		452-1¼	364 (400-1¼)	
LNAV MDA	520-1	432 (500-1)	520-1¼ 432 (500-1¼)	520-1½ 432 (500-1½)
CIRCLING	520-1 422 (500-1)	560-1 462 (500-1)	560-1½ 462 (500-1½)	660-2 562 (600-2)

AK, 26 DEC 2024 to 20 FEB 2025

AK, 26 DEC 2024 to 20 FEB 2025