

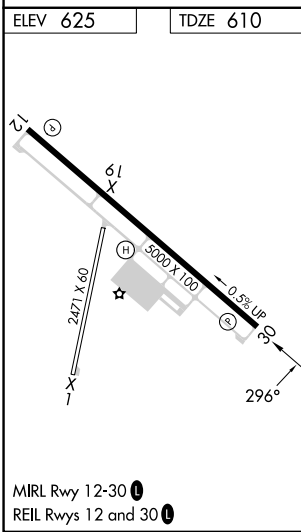
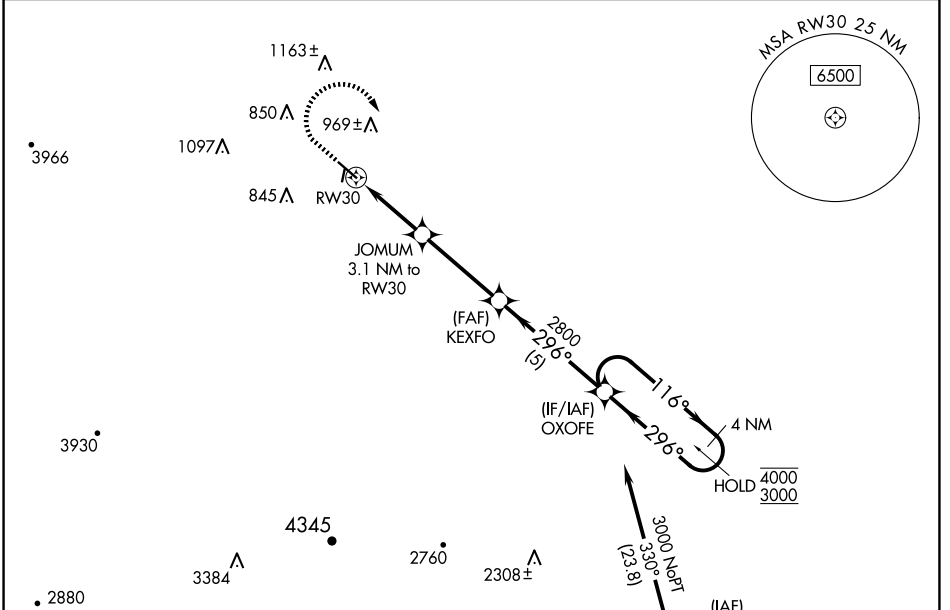
WAAS CH 69544 W30A	APP CRS 296°	Rwy Idg TDZE Apt Elev	5000 610 625
--	------------------------	-----------------------------	---

RNAV (GPS) RWY 30

NEW COALINGA MUNI (C80)

RNP APCH - GPS.	<p>⚠ Circling to Rwy 1, 19 NA at night. For uncompensated Baro-VNAV systems, LNAV/VNAV NA below -16°C or above 54°C.</p>	<p>MISSED APPROACH: Climb to 1200, then climbing right turn to 3000 direct OXOFE and hold.</p>
-----------------	---	--

AWOS-3 119.275	OAKLAND CENTER 128.7 307.0	UNICOM 122.7 (CTAF) 0
--------------------------	--------------------------------------	---------------------------------



ELEV 625	TDZE 610	Procedure NA for arrival on AVE VOR/DME airway radials 257 CW 313.			
1200	3000	OXOFE	OXOFE 4 NM Holding Pattern		
JOMUM 3.1 NM to RWY 30		KEXFO 2800	116° → 4000 ← 296° 3000		
RWY 30 1.6 NM to RWY 30		1640	296°		
1.6 NM		3.6 NM	5 NM		
CATEGORY	A	B	C	D	
LPV DA	936-1 326 (400-1)				
LNAV/VNAV DA	1030-1½ 420 (500-1½)				
LNAV MDA	1140-1 530 (600-1)		1140-1½ 530 (600-1½)		
CIRCLING	1160-1	1320-1	1420-2¼	1700-3	
	535 (600-1)	695 (700-1)	795 (800-2¼)	1075 (1100-3)	

SW-2, 23 JAN 2025 to 20 FEB 2025

SW-2, 23 JAN 2025 to 20 FEB 2025