

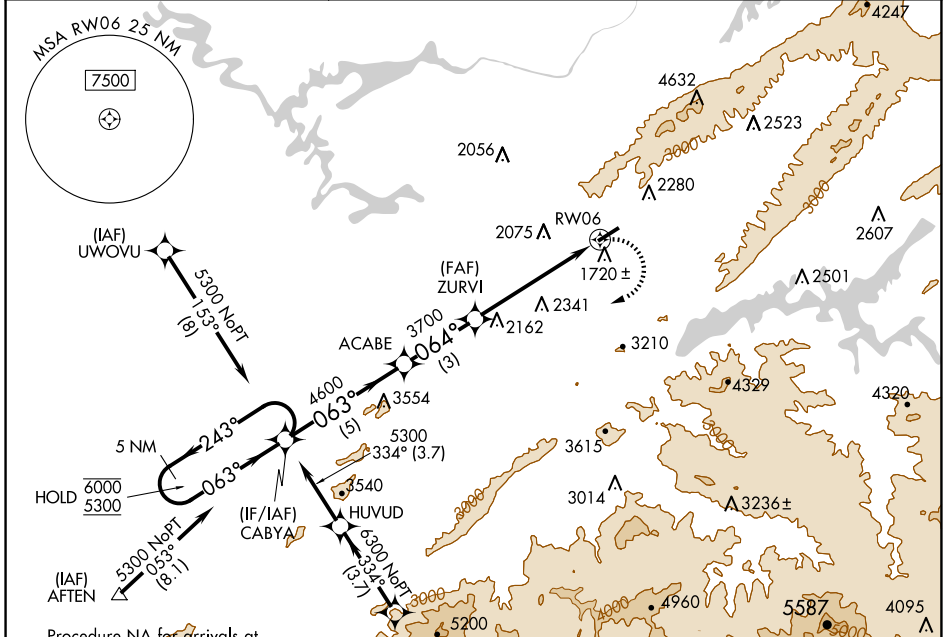
APP CRS	Rwy Idg	4904
064°	TDZE	1575
	Apt Elev	1593

RNAV (GPS) RWY 6

ELIZABETHTON MUNI (ØA.9)

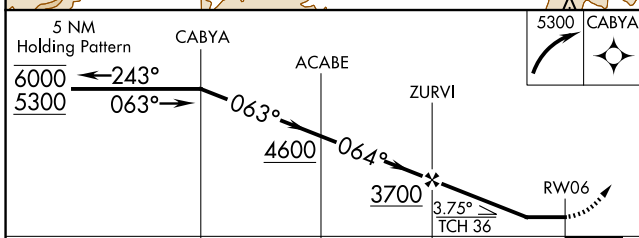
RNP APCH - GPS.	MISSED APPROACH: (Do not exceed 200K until CABYA) Climbing right turn to 5300 direct CABYA and hold.
<p>Circling NA northwest of Rwy 6-24. Procedure NA at night. Rwy 6 helicopter visibility reduction below 1 SM NA. -13°C</p>	

AWOS-3PT 135.675	TRI CITY APP CON ★ 134.425 349.0	UNICOM 123.0 (CTAF) 0
----------------------------	--	---------------------------------



Procedure NA for arrivals at AFTEN on V136 southwest bound.

ELEV 1593	D	TDZE 1575
-----------	----------	-----------



CATEGORY	A	B	C	D
LNNAV MDA	3080-1¼ 1505 (1500-1¼)	3160-1½ 1585 (1600-1½)	3260-3 1685 (1700-3)	NA
CIRCLING	3080-1¼ 1487 (1500-1¼)	3160-1½ 1567 (1600-1½)	3260-3 1667 (1700-3)	NA

REIL Rwy 6 **0**
LIRL Rwy 6-24 **0**

SE-1, 23 JAN 2025 to 20 FEB 2025

SE-1, 23 JAN 2025 to 20 FEB 2025