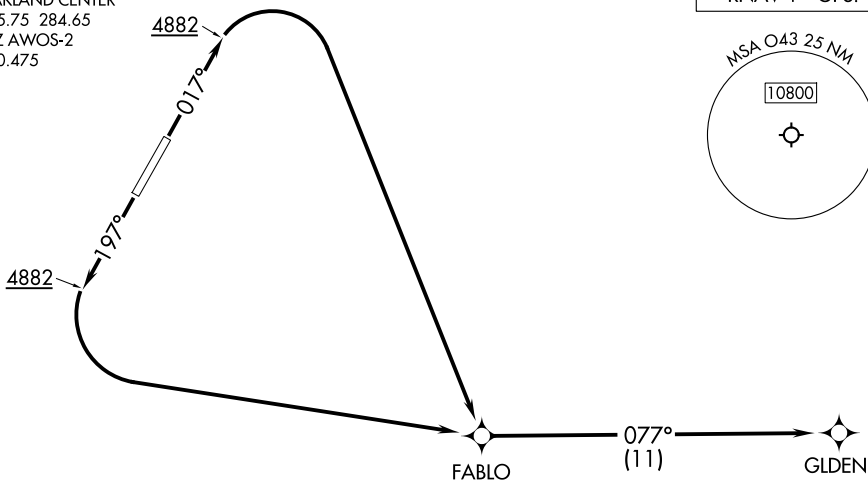
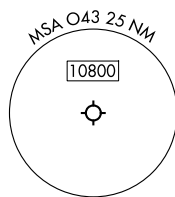


# YERINGTON ONE DEPARTURE (OBSTACLE) (RNAV)

OAKLAND CENTER  
125.75 284.65  
SPZ AWOOS-2  
120.475

RNAV 1 - GPS.



### TAKEOFF MINIMUMS

Rwy 2: Standard with minimum climb of 403'/NM to 9600.  
Rwy 20: Standard with minimum climb of 330'/NM to 8900.

### TAKEOFF OBSTACLE NOTES

Rwy 2: Pole vertical point, terrain beginning 15' from DER, 104' right of centerline, up to 6' AGL/4377' MSL. Trees, navaid beginning 54' from DER, 198' right of centerline, up to 22' AGL/4391' MSL. Vehicles on road beginning 106' from DER, 161' left of centerline, up to 4388' MSL. Trees beginning 363' from DER, 307' right of centerline, up to 25' AGL/4395' MSL. Trees beginning 445' from DER, 523' right of centerline, up to 4430' MSL. Tree 519' from DER, 476' right of centerline, 4436' MSL. Tree 543' from DER, 641' left of centerline, 45' AGL/4415' MSL. Tree 816' from DER, 330' right of centerline, 4441' MSL. Trees beginning 1795' from DER, 87' right of centerline, up to 4450' MSL. Tree 2561' from DER, 798' right of centerline, 85' AGL/4454' MSL.

Rwy 20: Terrain 3' from DER, 241' left of centerline, 4382' MSL. Poles, trees, fence, vehicle on road beginning 56' from DER, 433' left of centerline, up to 44' AGL/4421' MSL. Tree 58' from DER, 48' right of centerline, 4382' MSL. Pole, wind indicator, navaid, building, terrain, fences vehicles on road, tank, tree beginning 91' from DER, 72' right of centerline, up to 34' AGL/4415' MSL. Building, poles, trees, vehicles on road beginning 368' from DER, 241' left of centerline, up to 44' AGL/4430' MSL. Tree 734' from DER, 477' right of centerline, 57' AGL/4436' MSL. Antenna, tower, poles, trees, building beginning 755' from DER, 40' left of centerline, up to 73' AGL/4457' MSL. Trees, building, poles beginning 876' from DER, 63' right of centerline, up to 59' AGL/4439' MSL. Tower 1361' from DER, 505' left of centerline, 81' AGL/4461' MSL. Antennas, building, poles, trees beginning 1361' from DER, 233' left of centerline, up to 82' AGL/4464' MSL. Towers, trees beginning 2023' from DER, 33' left of centerline, up to 90' AGL/4473' MSL. Antenna 2473' from DER, 756' left of centerline, 124' AGL/4508' MSL. Tree 2481' from DER, 39' right of centerline, 62' AGL/4445' MSL. Towers, trees beginning 2489' from DER, 70' left of centerline, up to 127' AGL/4511' MSL. Tree 2561' from DER, 187' right of centerline, 4455' MSL. Tree 2608' from DER, 222' right of centerline, 73' AGL/4456' MSL. Tree 3020' from DER, 192' right of centerline, 4458' MSL. Terrain beginning 1.8 NM from DER, 3194' right of centerline, up to 4674' MSL. Terrain beginning 1.9 NM from DER, 2711' right of centerline, up to 4684' MSL. Trees 2.1 NM from DER, 4018' right of centerline, 100' AGL/4769' MSL. Trees beginning 2.2 NM from DER, 4075' right of centerline, up to 100' AGL/4772' MSL.

NOTE: Chart not to scale.

### DEPARTURE ROUTE DESCRIPTION

TAKEOFF RUNWAY 2: Climb on heading 017° to 4882, then right turn direct FABLO, thence. . . .

TAKEOFF RUNWAY 20: Climb on heading 197° to 4882, then left turn direct FABLO, thence. . . .

. . . . thence on track 077° to GLDEN. Maintain ATC assigned altitude, expect filed altitude 10 minutes after departure.