

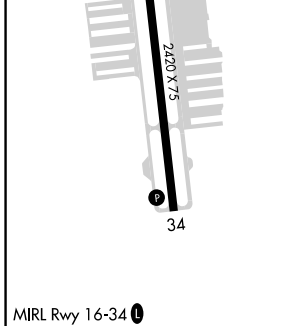
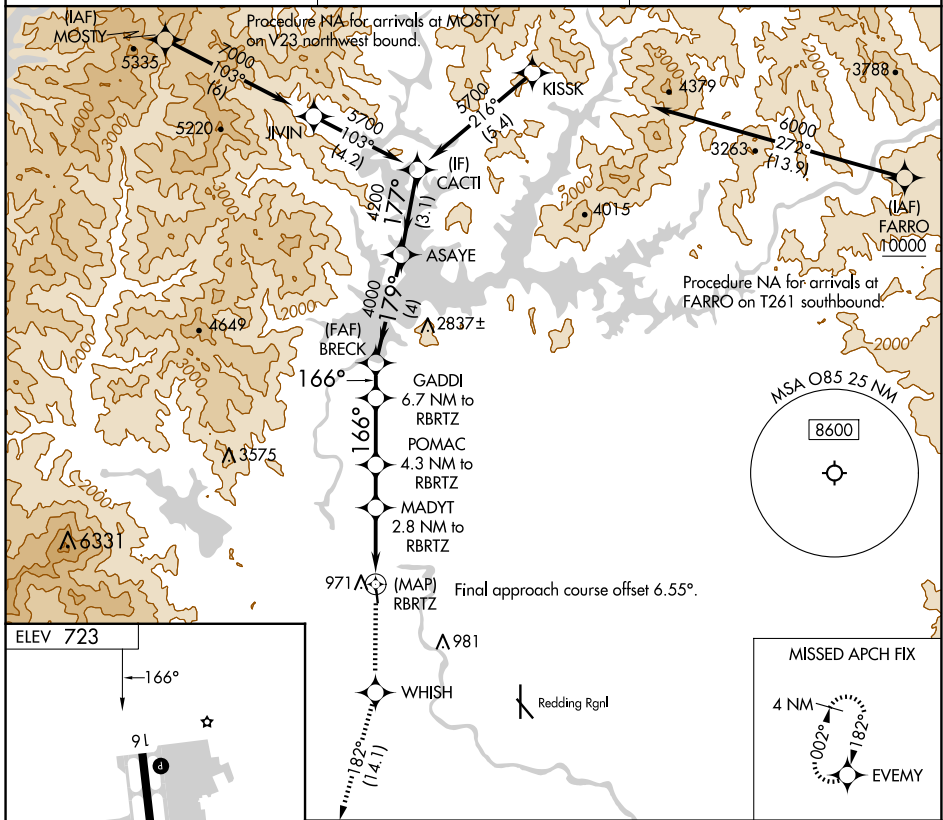
APP CRS	Rwy Idg	N/A
166°	TDZE	N/A
	Apt Elev	723

RNAV (GPS)-A

BENTON FLD (O85)

RNP APCH - GPS.	Procedure NA at night. Rwy 16, 34 helicopter visibility reduction below 1 SM NA. When local altimeter setting not received, use Redding Rgnl altimeter setting and increase all MDAs 60 feet.	MISSED APPROACH: Climb to 4000 direct WHISH and on track 182° to EVMY and hold.
-----------------	---	---

AWOS-2 118.675	OAKLAND CENTER 132.2 350.3	UNICOM 122.8 (CTAF) 0
--------------------------	--------------------------------------	---------------------------------



4000	WHISH	EVMY	VGSI and descent angles not coincident (VGSI Angle 3.50/TCH 24).	
↑	182°	182°	GADDI 6.7 NM to RBRTZ	CACTI 5700
			BRECK	ASAYE 4200
			POMAC 4.3 NM to RBRTZ	
			MADYT 2.8 NM to RBRTZ	
			RBRTZ	
			3.70° TCH 60	
			166°	179°
			1960	2560
			3500	4000
			2.8 NM	1.5 NM
			2.4 NM	1.3 NM
			4 NM	3.1 NM
CATEGORY	A	B	C	D
CIRCLING	1340-1 617 (700-1)	1600-1¼ 877 (900-1¼)	NA	NA

SW-2, 23 JAN 2025 to 20 FEB 2025

SW-2, 23 JAN 2025 to 20 FEB 2025