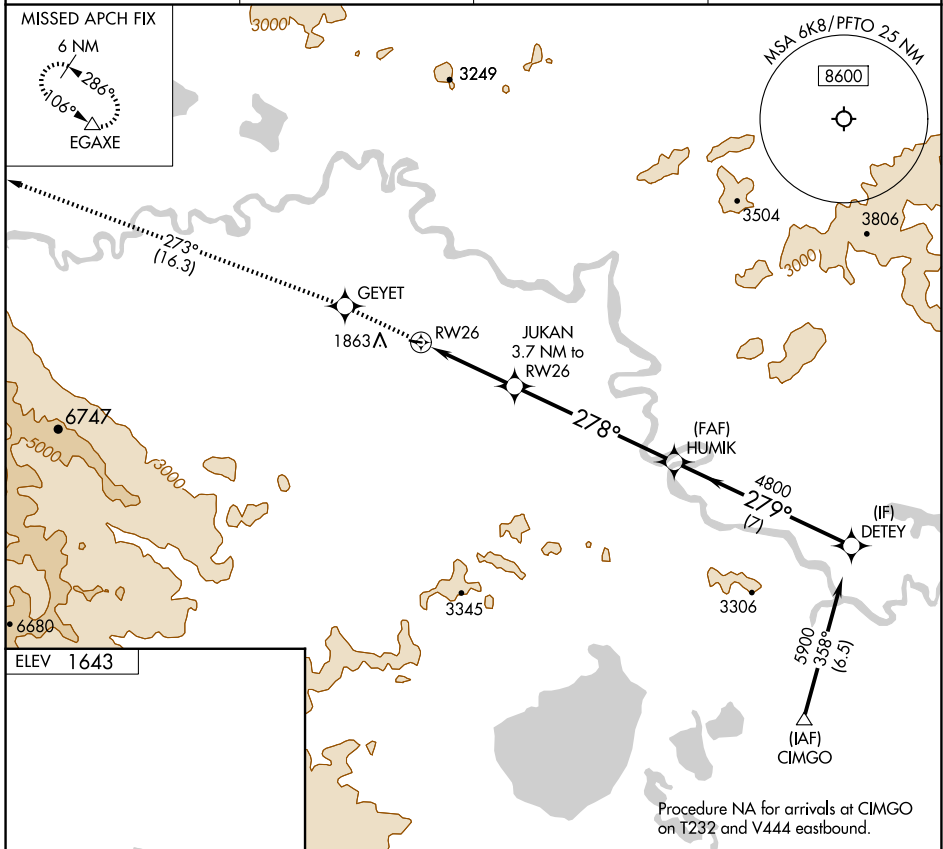


APP CRS <b>278°</b>	Rwy Idg TDZE Apt Elev	<b>N/A</b> <b>N/A</b> <b>1643</b>
------------------------	-----------------------------	---

# RNAV (GPS)-A

TOK JUNCTION (6K8) (PFTO)

RNP APCH - GPS.		MISSED APPROACH: Climb to 8000 direct GEYET and on track 273° to EGAXE and hold, do not exceed 230K when continuing climb-in-hold to 8000.	
AWOS-3P <b>118.1</b>	ANCHORAGE CENTER <b>126.55 323.0</b>	NORTHWAY RADIO <b>122.4</b>	UNICOM <b>122.8 (CTAF)</b>



8000	GEYET	tr 273°	EGAXE	DETEY
<p>JUKAN 3.7 NM to RW26</p> <p>HUMIK 4800</p> <p>DETEY 5900</p> <p>278° 279°</p> <p>2820</p> <p>3.7 NM 6.3 NM 7 NM</p>				
CATEGORY	A	B	C	D
CIRCLING	2180-1	537 (600-1)	NA	

AK, 26 DEC 2024 to 20 FEB 2025

AK, 26 DEC 2024 to 20 FEB 2025