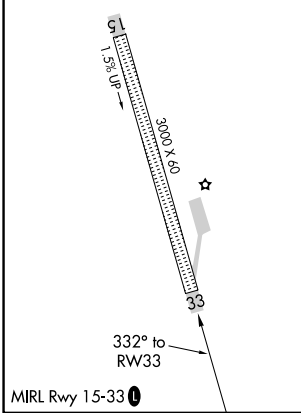
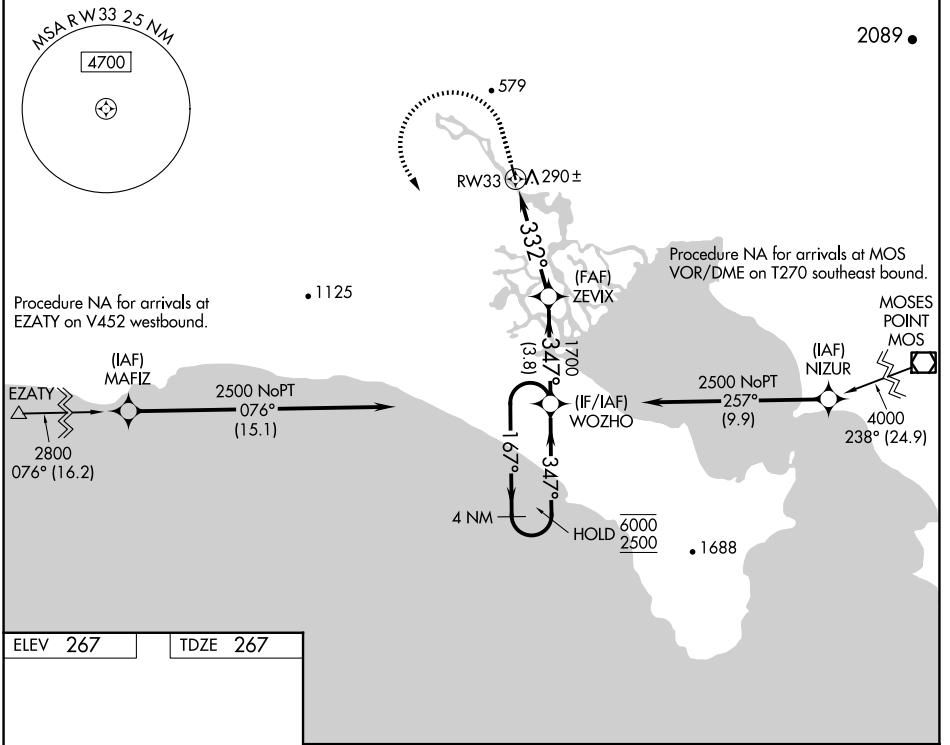


WAAS CH 97743 W33A	APP CRS 332°	Rwy ldg 3000 TDZE 267 Apt Elev 267
--	------------------------	---

RNAV (GPS) RWY 33

WHITE MOUNTAIN (WMO) (P A W M)

RNP APCH. MISSED APPROACH: Climb to 1100 then climbing left turn to 2500 direct WOZHO and hold.			
Circling NA northeast of Rwy 15-33.			
AWOS-3P 121.45	ANCHORAGE CENTER 133.3 290.4	NOME RADIO 122.05	CTAF 122.9 0



1100	2500	WOZHO	WOZHO 4 NM Holding Pattern	
*LNAV only		*0.9 NM to RWY33	1700	167° → 6000 / 2500
RWY33		332°	347°	← 347°
-0.9		3.5 NM	3.8 NM	GP 3.00° TCH 40
CATEGORY	A	B	C	D
LPV DA		517-1 250 (300-1)		NA
LNAV MDA		600-1 333 (400-1)		NA
<input checked="" type="checkbox"/> CIRCLING	620-1 353 (400-1)	720-1 453 (500-1)	1080-2½ 813 (900-2½)	NA

AK, 26 DEC 2024 to 20 FEB 2025

AK, 26 DEC 2024 to 20 FEB 2025