

WAAS CH 70528 W09A	APP CRS 094°	Rwy Idg TDZE Apt Elev	5002 357 359
--	------------------------	-----------------------------	---

RNAV (GPS) RWY 9

HEADLAND MUNI (HDL)

RNP APCH - GPS.

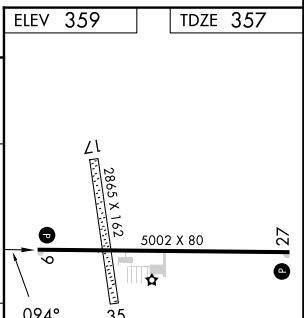
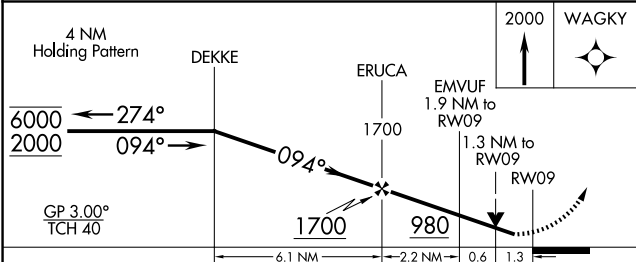
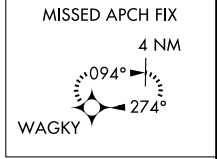
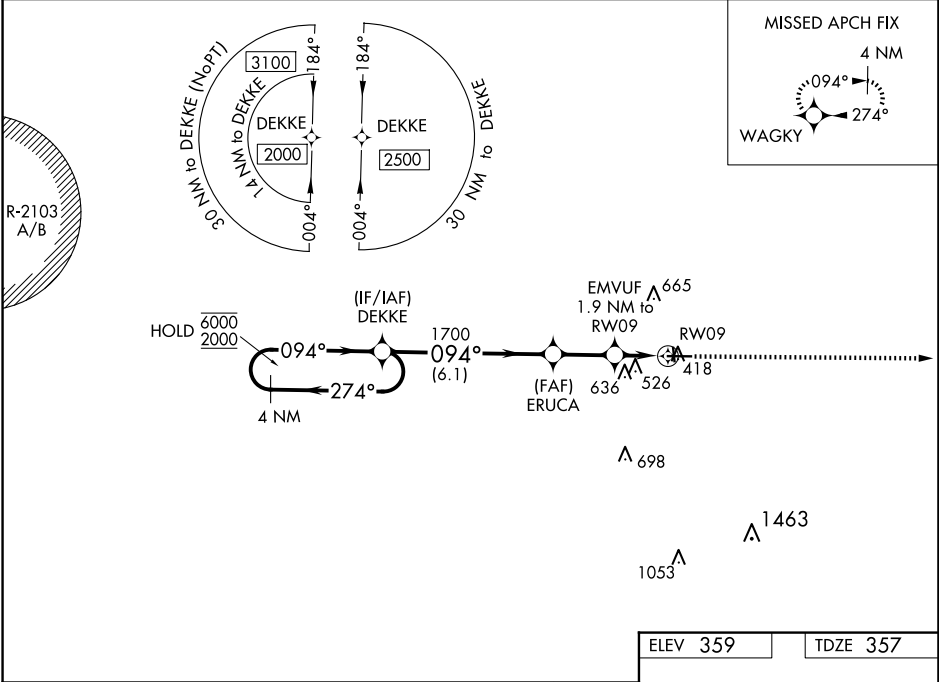
- Circling NA to Rwy 17 and 35. Circling Rwy 27 NA at night.
- Rwy 9 helicopter visibility reduction below 3/4 SM NA.

MISSED APPROACH: Climb to 2000 direct WAGKY and hold.

AWOS-3PT
119.575

CAIRNS APP CON ★
125.4

CTAF
122.90



CATEGORY	A	B	C	D
LPV DA	631-1 274 (300-1)			NA
LNAV/DA	810-1 ³ / ₈ 453 (500-1 ³ / ₈)			NA
LNAV MDA	800-1	443 (500-1)	800-1 ³ / ₈ 443 (500-1 ³ / ₈)	NA
CIRCLING	860-1 501 (600-1)	940-1 581 (600-1)	980-1 ³ / ₄ 621 (700-1 ³ / ₄)	NA

ELEV 359	TDZE 357
----------	----------

MIRL Rwy 9-27
REIL Rwy 9 and 27

SE-4, 23 JAN 2025 to 20 FEB 2025

SE-4, 23 JAN 2025 to 20 FEB 2025