

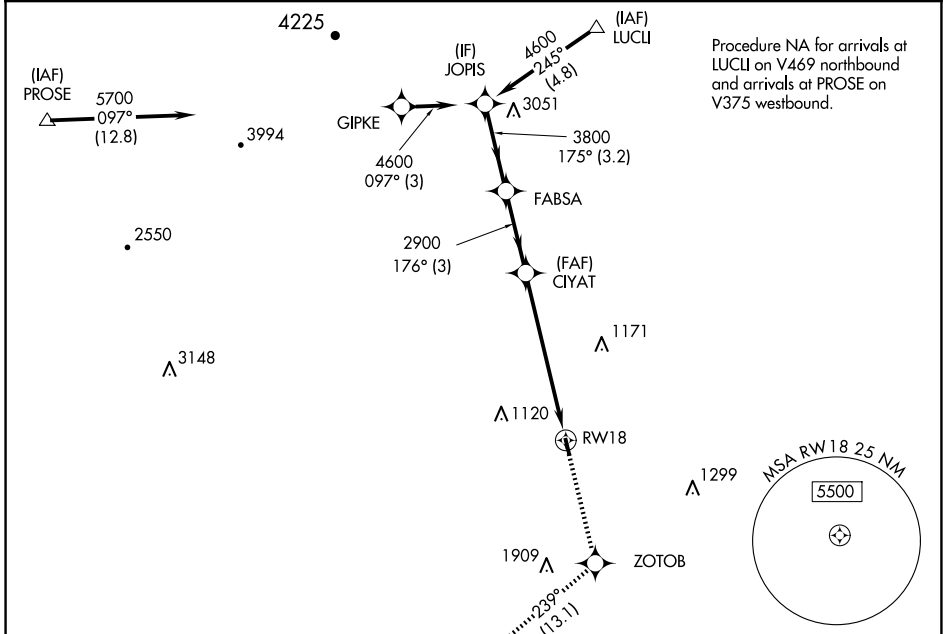
APP CRS	Rwy Idg	3049
176°	TDZE	842
	Apt Elev	842

RNAV (GPS) RWY 18

NEW LONDON (W90)

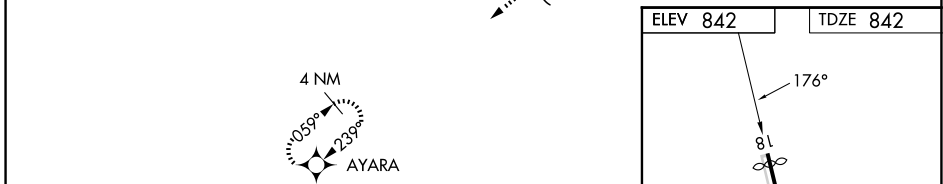
RNP APCH.	Rwy 18 helicopter visibility reduction below 1 SM NA. Procedure NA at night. Use Lynchburg altimeter setting.	MISSED APPROACH: Climb to 4000 direct ZOTOB and on track 239° to AYARA and hold.
(V) NA		

LYH ASOS 119.8	ROANOKE APP CON 135.0 254.325	UNICOM 122.8 (CTAF)
--------------------------	---	-------------------------------

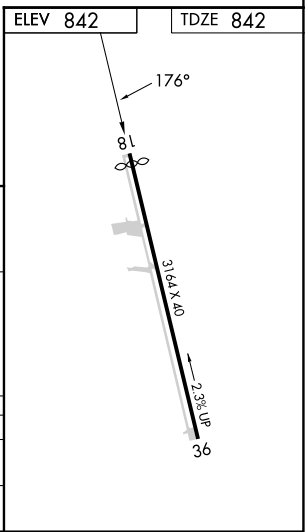


NE-3, 23 JAN 2025 to 20 FEB 2025

NE-3, 23 JAN 2025 to 20 FEB 2025



JOPIS	Visual Segment - Obstacles.		4000	ZOTOB	ir 239°	AYARA
4600	FABSA	CIYAT	↑	✧	✧	✧
175°	3800	176°				
	2900					
						RW18
	3.2 NM	3 NM		6.2 NM		



CATEGORY	A	B	C	D
LNAV MDA	1860-3	1018 (1100-3)		NA
CIRCLING	1860-3	1018 (1100-3)		NA