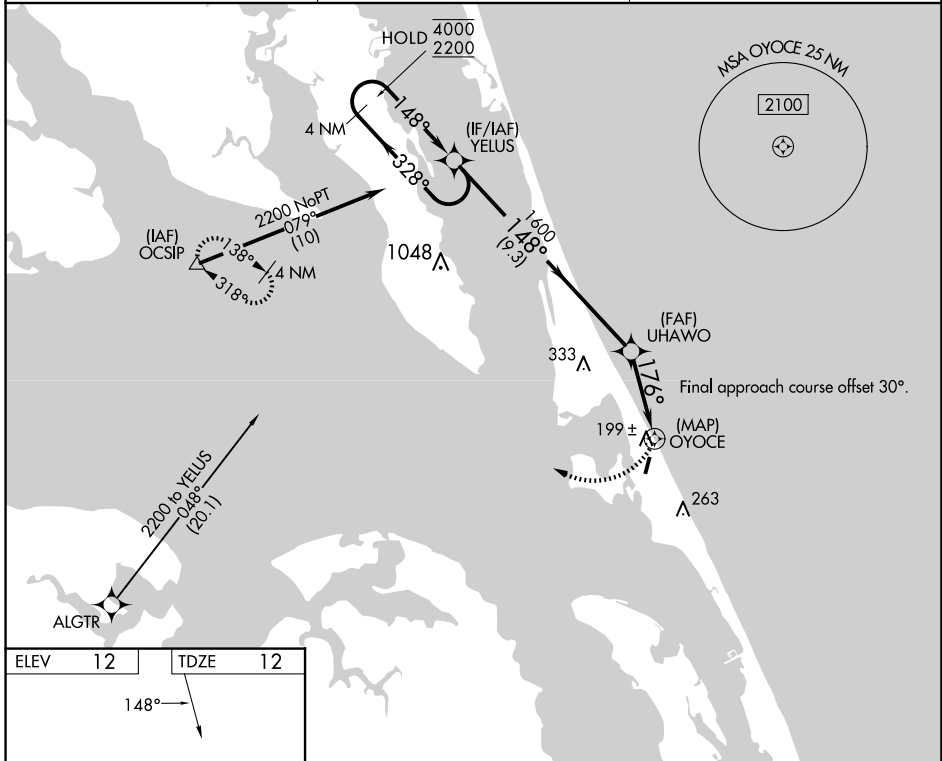


WAAS CH <b>50240</b> <b>W21A</b>	APP CRS <b>176°</b>	Rwy Idg TDZE Apt Elev	<b>3000</b> <b>12</b> <b>12</b>
--	------------------------	-----------------------------	---------------------------------------

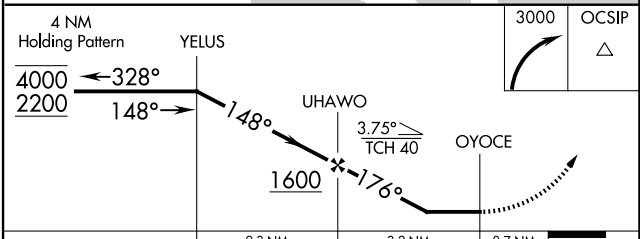
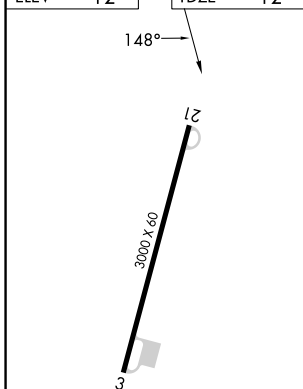
# RNAV (GPS) RWY 21

FIRST FLIGHT (FFA)

RNP APCH - GPS.		MISSED APPROACH: Climbing right turn to 3000 direct OCSIP and hold.
<p>▼ Rwy 21 helicopter visibility reduction below 1 SM NA. ▲ Procedure NA at night.</p>		
AWOS-3 <b>118.075</b>	CHERRY POINT APP CON <b>124.725 350.35</b>	CTAF <b>122.9</b>



ELEV 12	TDZE 12
---------	---------



CATEGORY	A	B	C	D
LP MDA	460-1	448 (500-1)	NA	
LNAV MDA	500-1	488 (500-1)	NA	
<input checked="" type="checkbox"/> CIRCLING	520-1 508 (600-1)	540-1 528 (600-1)	NA	

SE-2, 23 JAN 2025 to 20 FEB 2025

SE-2, 23 JAN 2025 to 20 FEB 2025