

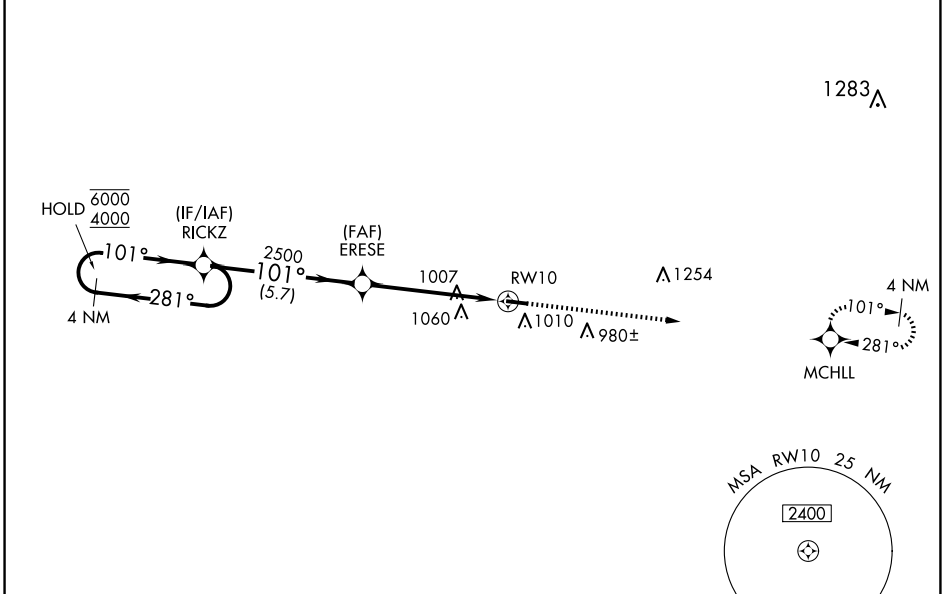
WAAS CH <b>90442</b> <b>W10A</b>	APP CRS <b>101°</b>	Rwy Idg TDZE Apt Elev	<b>4000</b> <b>728</b> <b>732</b>
--	------------------------	-----------------------------	---

# RNAV (GPS) RWY 10

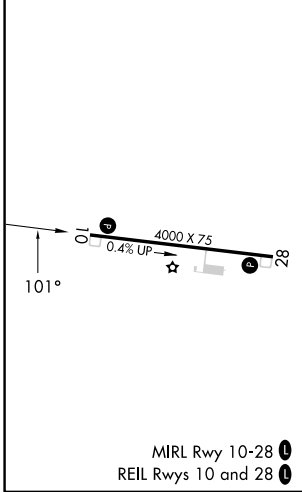
BRECKINRIDGE COUNTY (I93)

RNP APCH.	<p><b>▽</b> Rwy 10 helicopter visibility reduction below <math>\frac{3}{4}</math> SM NA. <b>△</b> NA Baro-VNAV NA. Use Fort Knox altimeter setting, when not received, use Elizabethtown altimeter setting and increase LPV DA to 1043, LNAV/VNAV DA to 1191 and all MDA 20 feet.</p>	<p>MISSED APPROACH: Climb to 4000 direct MCHLL and hold, continue climb-in-hold to 4000.</p>
-----------	---	--

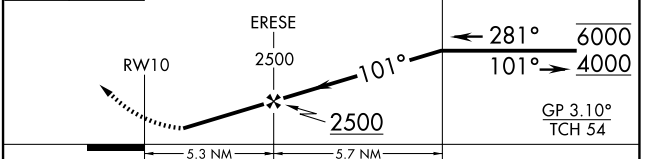
AWOS-3PT <b>123.625</b>	KFTK ATIS ★ <b>109.6</b>	LOUISVILLE APP CON <b>132.075 327.0</b>	CTAF <b>122.9 0</b>
----------------------------	-----------------------------	--	------------------------



ELEV 732	TDZE 728
----------	----------



4000	MCHLL	VGSI and RNAV glidepath not coincident (VGSI Angle 3.10/TCH 34).	4 NM Holding Pattern
------	-------	--	----------------------



CATEGORY	A	B	C	D
LPV DA		1036-1	308 (400-1)	
LNAV/VNAV DA		1184-1 $\frac{3}{8}$	456 (500-1 $\frac{3}{8}$ )	
LNAV MDA	1380-1	652 (700-1)	1380-1 $\frac{7}{8}$	652 (700-1 $\frac{7}{8}$ )
<b>C</b> CIRCLING	1380-1 648 (700-1)	1480-1 748 (800-1)	1480-2 $\frac{1}{4}$ 748 (800-2 $\frac{1}{4}$ )	1480-2 $\frac{1}{2}$ 748 (800-2 $\frac{1}{2}$ )

SE-1, 23 JAN 2025 to 20 FEB 2025

SE-1, 23 JAN 2025 to 20 FEB 2025