

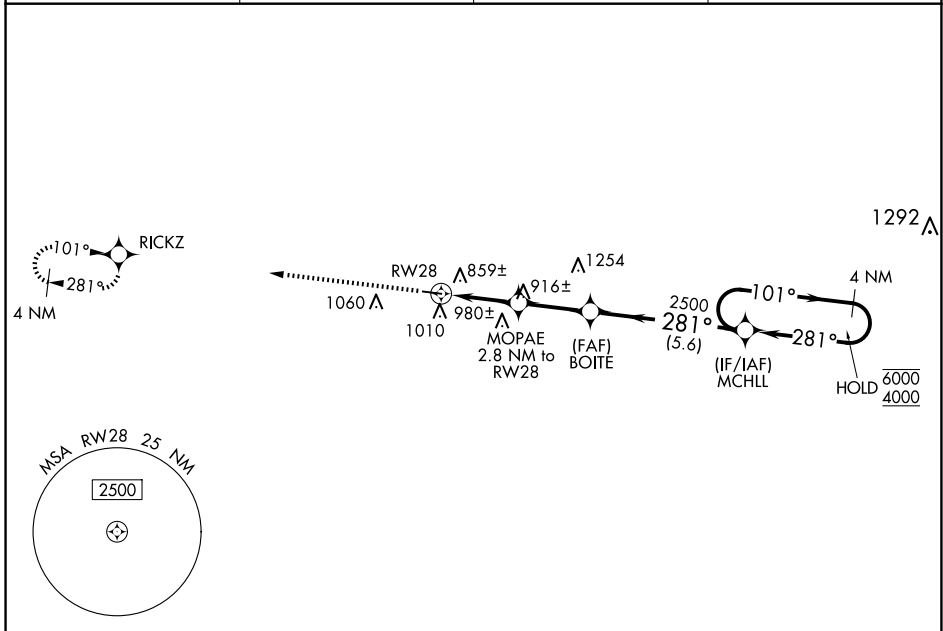
WAAS CH <b>77842</b> <b>W28A</b>	APP CRS <b>281°</b>	Rwy Idg TDZE Apt Elev	<b>4000</b> <b>732</b> <b>732</b>
--	------------------------	-----------------------------	---

# RNAV (GPS) RWY 28

BRECKINRIDGE COUNTY (I93)

RNP APCH.	Baro-VNAV NA. Use Fort Knox altimeter setting, when not received, use Elizabethtown altimeter setting and increase LPV DA to 1047, LNAV/VNAV DA to 1185 and all MDA 20 feet.	MISSED APPROACH: Climb to 4000 direct RICKZ and hold, continue climb-in-hold to 4000.
-----------	--	---

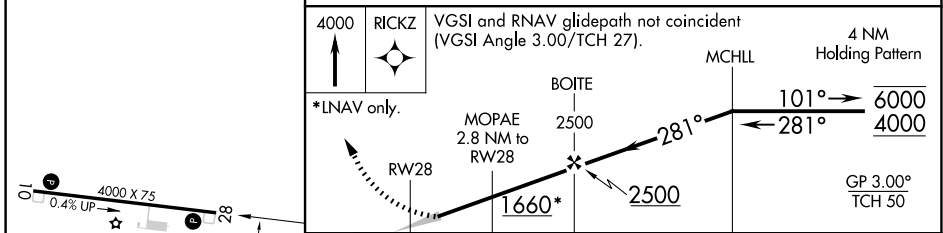
AWOS-3PT <b>123.625</b>	KFTK ATIS * <b>109.6</b>	LOUISVILLE APP CON <b>132.075 327.0</b>	CTAF <b>122.9 0</b>
----------------------------	-----------------------------	--	------------------------



SE-1, 23 JAN 2025 to 20 FEB 2025

SE-1, 23 JAN 2025 to 20 FEB 2025

ELEV 732	TDZE 732
----------	----------



4000	RICKZ	VGSI and RNAV glidepath not coincident (VGSI Angle 3.00°/TCH 27°).	4 NM	MCHLL	Holding Pattern
*LNAV only.	MOPAE	2.8 NM to RWY 28	2500	BOITE	2500
1660*	2500	281°	101°	6000	4000
GP 3.00°	TCH 50				

CATEGORY	A	B	C	D
LPV DA		1040-1	308 (400-1)	
LNAV/VNAV DA		1178-1 <sup>3</sup> / <sub>8</sub>	446 (500-1 <sup>3</sup> / <sub>8</sub> )	
LNAV MDA	1180-1	448 (500-1)	1180-1 <sup>3</sup> / <sub>8</sub>	448 (500-1 <sup>3</sup> / <sub>8</sub> )
<input checked="" type="checkbox"/> CIRCLING	1380-1 648 (700-1)	1480-1 748 (800-1)	1480-2 <sup>1</sup> / <sub>4</sub> 748 (800-2 <sup>1</sup> / <sub>4</sub> )	1480-2 <sup>1</sup> / <sub>2</sub> 748 (800-2 <sup>1</sup> / <sub>2</sub> )