

APP CRS	Rwy Idg	3199
087°	TDZE	752
	Apt Elev	752

RNAV (GPS) RWY 9

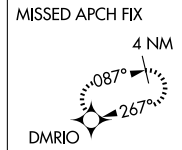
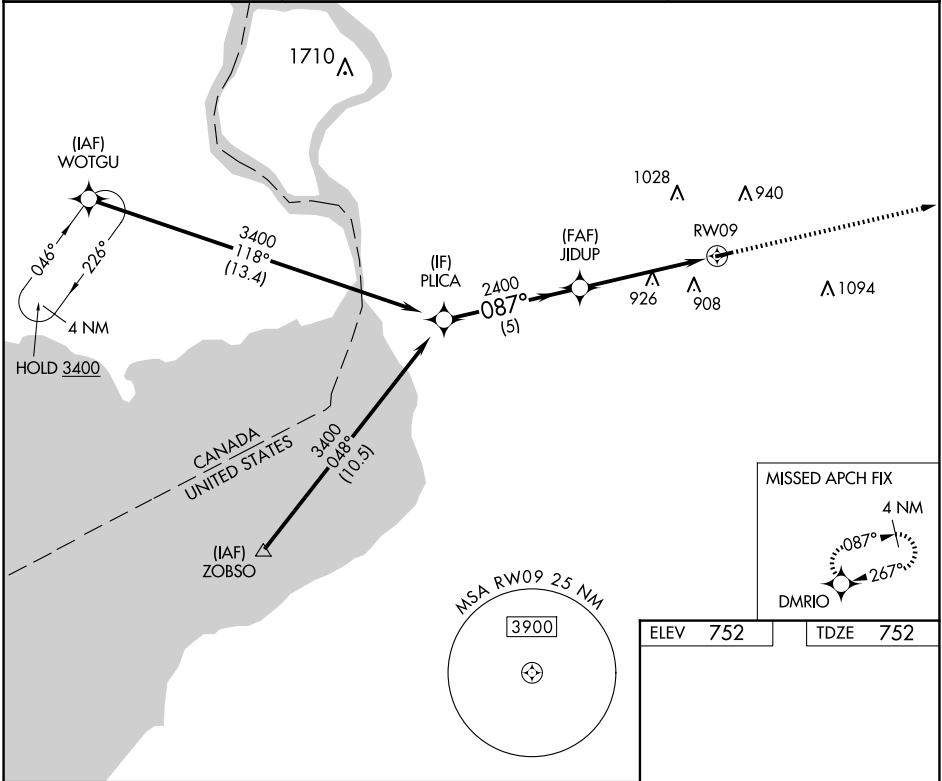
BUFFALO-LANCASTER RGNL (BQR)

RNP APCH - GPS.

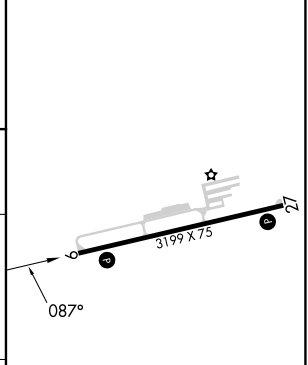
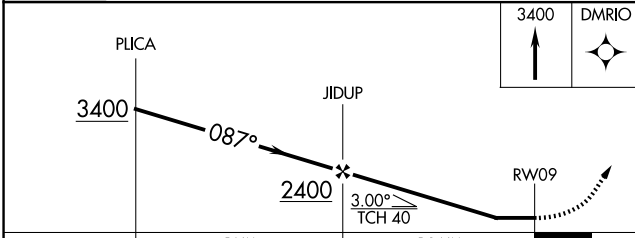
⚠ NA When Circling to Rwy 27 at night, operational VGSI required, remain on or above VGSI glidepath until threshold. Rwy 9 helicopter visibility reduction below 3/4 SM NA. Use Buffalo Niagara Intl altimeter setting.

MISSED APPROACH: Climb to 3400 direct DMRIO and hold, continue climb-in-hold to 3400.

BUF ASOS 135.35	BUFFALO APP CON 126.15 263.125	UNICOM 123.05 (CTAF) 0
---------------------------	--	----------------------------------



ELEV 752	TDZE 752
-----------------	-----------------



CATEGORY	A	B	C	D
LNVA MDA	1200-1	448 (500-1)		NA
CIRCLING	1220-1 468 (500-1)	1320-1 568 (600-1)		NA

MIRL Rwy 9-27 **0**
REIL Rws 9 and 27 **0**

NE-2, 23 JAN 2025 to 20 FEB 2025

NE-2, 23 JAN 2025 to 20 FEB 2025