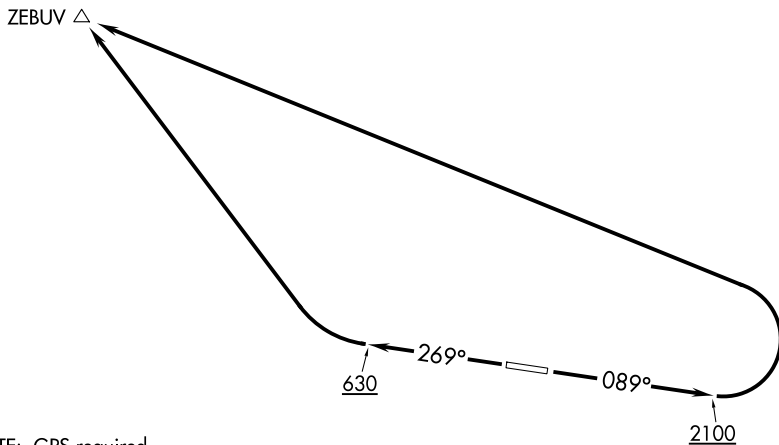


(ZEBUV1.ZEBUV) 19339

# ZEBUV ONE DEPARTURE (OBSTACLE) (RNAV)

AKUTAN (7AK) (PAUT)  
AL-10983 (FAA) AKUTAN, ALASKA

ANCHORAGE CENTER  
121.4



NOTE: GPS required.

NOTE: RNAV-1.

### TAKEOFF MINIMUMS

Rwy 9: Standard with minimum climb of 240' per NM to 3400.

Rwy 27: Standard with minimum climb of 440' per NM to 630.

### TAKEOFF OBSTACLE NOTES

- Rwy 9: Terrain beginning 90' from DER, 398' right of centerline, up to 160' MSL.  
Terrain beginning 198' from DER, 396' right of centerline, up to 162' MSL.  
Terrain beginning 500' from DER, 398' right of centerline, up to 163' MSL.  
Terrain 2038' from DER, 998' left of centerline, 202' MSL.  
Terrain 2298' from DER, 998' left of centerline, 226' MSL.  
Terrain beginning 2353' from DER, 923' left of centerline, up to 234' MSL.  
Terrain beginning 2702' from DER, 1197' left of centerline, up to 249' MSL.  
Terrain beginning 3846' from DER, 1198' left of centerline, up to 258' MSL.  
Terrain beginning 3943' from DER, 1167' left of centerline, up to 263' MSL.
- Rwy 27: Terrain 8' from DER, 494' left of centerline, 115' MSL.  
Terrain 1796' from DER, 758' left of centerline, 164' MSL.  
Terrain beginning 1968' from DER, 800' left of centerline, up to 170' MSL.  
Terrain beginning 2000' from DER, 740' left of centerline, up to 181' MSL.

NOTE: Chart not to scale.

### DEPARTURE ROUTE DESCRIPTION

TAKEOFF RUNWAY 9: Climb heading 089° to 2100 then climbing left turn to 6000 direct ZEBUV before proceeding on course.

TAKEOFF RUNWAY 27: Climb heading 269° to 630 then climbing right turn to 6000 direct ZEBUV before proceeding on course.

# ZEBUV ONE DEPARTURE (OBSTACLE) (RNAV)

(ZEBUV1.ZEBUV) 05DEC19

AKUTAN, ALASKA  
AKUTAN (7AK) (PAUT)