

WAAS CH 52885 W36A	APP CRS 357°	Rwy Idg TDZE 1711 Apt Elev 1711	6536
--	------------------------	---	-------------

RNAV (GPS) RWY 36

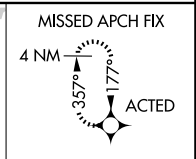
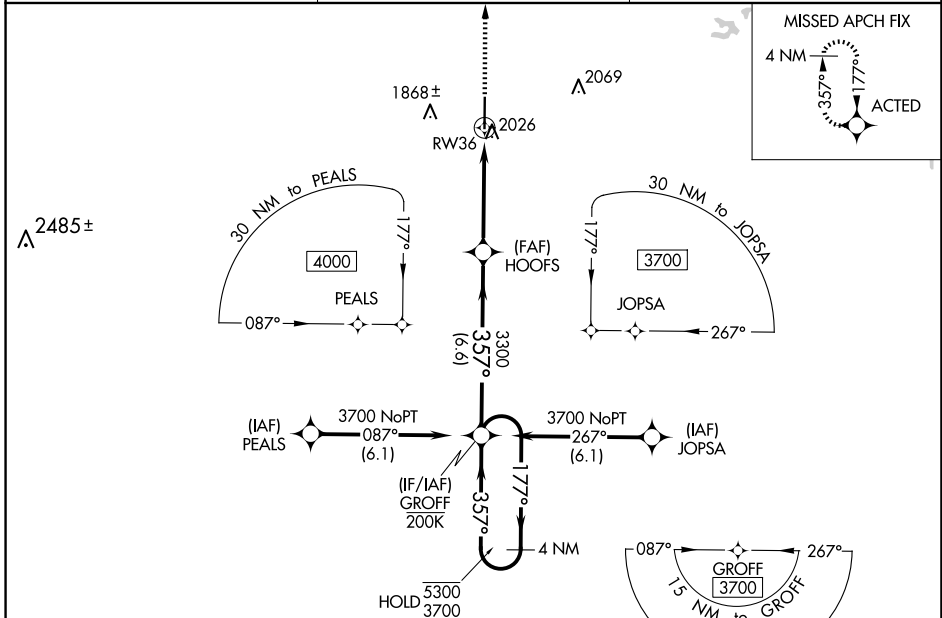
GREGORY M SIMMONS MEML (GZN)

RNP APCH - GPS.

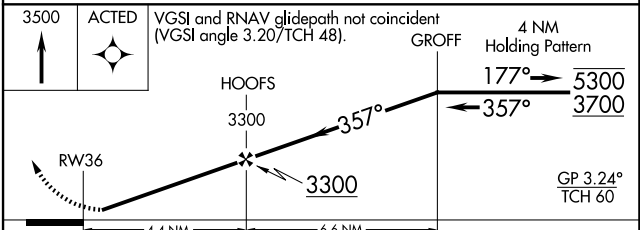
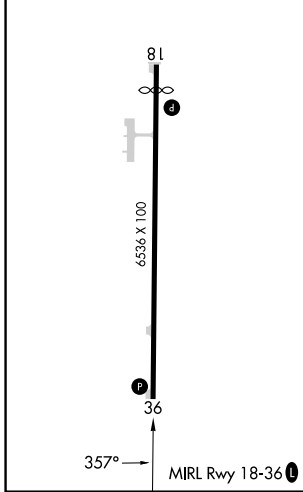
▼ Circling NA east of Rwy 18-36. Baro-VNAV NA when using Eastland altimeter setting. For uncompensated Baro-VNAV systems, LNAV/VNAV NA below -18°C or above 54°C. When local altimeter setting not received, use Eastland altimeter setting and increase LPV DA to 2023 feet; increase LNAV/VNAV DA to 2249 feet and all visibilities ½ SM. Increase all MDA_s 80 feet and LNAV visibility Cat C/D ¼ SM, and Circling visibility Cat C ¼ SM. Rwy 36 helicopter visibility reduction below 1 SM NA.

MISSED APPROACH: Climb to 3500 direct ACTED and hold.

AWOS-4 118.0	ABILENE APP CON 125.0 338.3	CTAF 122.9
------------------------	---------------------------------------	----------------------



ELEV 1711	D	TDZE 1711
-----------	----------	-----------



3500	ACTED	VGSi and RNAV glidepath not coincident (VGSi angle 3.20/TCH 48).		4 NM Holding Pattern
↑	✦	HOOPS	3300	3700
		357°	357°	5300
		4.4 NM	6.6 NM	3700
CATEGORY	A	B	C	D
LPV DA	1961-1		250 (300-1)	
LNAV/VNAV DA	2187-1½		476 (500-1½)	
LNAV MDA	2280-1	569 (600-1)	2280-1½	569 (600-1½)
CIRCLING	2280-1	569 (600-1)	2280-1½	2600-3 569 (600-1½) 889 (900-3)

SC-2, 23 JAN 2025 to 20 FEB 2025

SC-2, 23 JAN 2025 to 20 FEB 2025