

WAAS CH 41250 W18A	APP CRS 177°	Rwy Idg TDZE 1711 Apt Elev 1711	6064
--	------------------------	---	-------------

RNAV (GPS) Y RWY 18

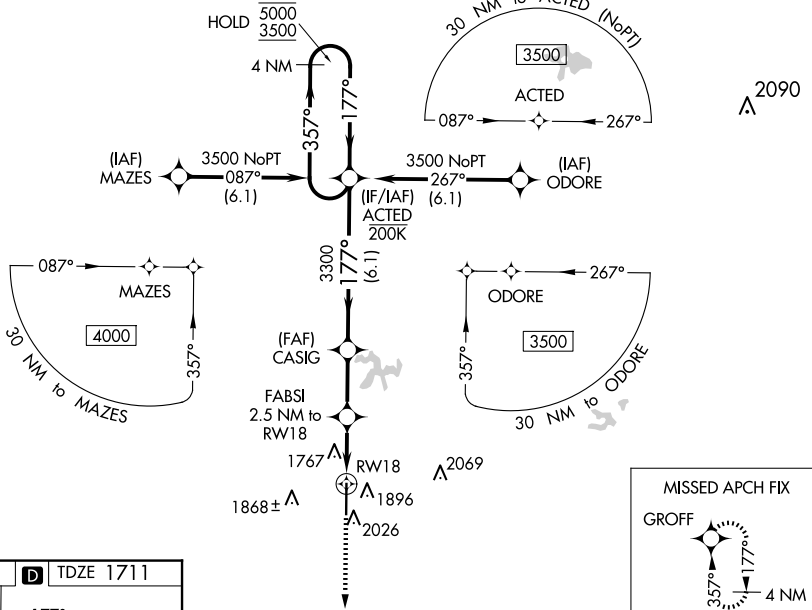
GREGORY M SIMMONS MEML (GZN)

RNP APCH - GPS.

⚠ Circling NA east of Rwy 18-36. Baro-VNAV and VDP NA when using Eastland altimeter setting. For uncompensated Baro-VNAV systems, LNAV/VNAV NA below -18°C or above 54°C. When local altimeter setting not received, use Eastland altimeter setting and increase LPV DA to 2023 feet; increase LNAV/VNAV DA to 2067 feet; increase all MDAs 80 feet and LNAV visibility Cat C/D 3/8 SM. Rwy 18 helicopter visibility reduction below 3/8 SM NA.

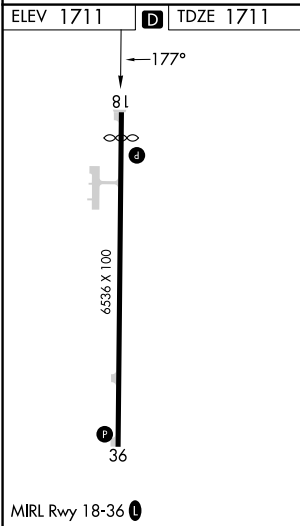
MISSED APPROACH:
Climb to 3700 direct GROFF and hold.

AWOS-4 118.0	ABILENE APP CON 125.0 338.3	CTAF 122.9
------------------------	---------------------------------------	----------------------



SC-2, 23 JAN 2025 to 20 FEB 2025

SC-2, 23 JAN 2025 to 20 FEB 2025



3700	GROFF	4 NM Holding Pattern		
CASIG	FABS I 2.5 NM to RWY 18	ACTED		
3300	1 NM to RWY 18	5000 / 3500		
2540	177°	357°		
3300	177°	177°		
1 NM	1.5 NM	2.4 NM	6.1 NM	
GP 3.00°	TCH 45			
CATEGORY	A	B	C	D
LPV DA	1961-1		250 (300-1)	
LNAV/VNAV DA	1985-1		274 (300-1)	
LNAV MDA	2060-1		349 (400-1)	
CIRCLING	2140-1 429 (500-1)	2180-1 469 (500-1)	2180-1½ 469 (500-1½)	2600-3 889 (900-3)