

LOC/DME I-ABI <b>110.3</b> Chan 40	APP CRS <b>355°</b>	Rwy Idg TDZE Apt Elev <b>7198</b> <b>1776</b> <b>1791</b>
--	------------------------	--

# ILS or LOC RWY 35R

ABILENE RGNL (ABI)

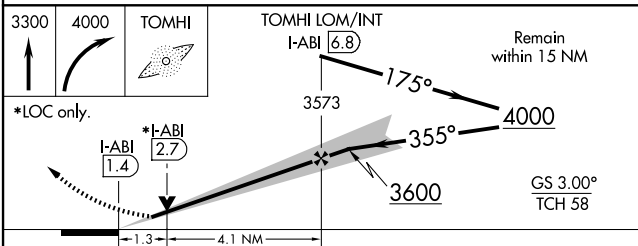
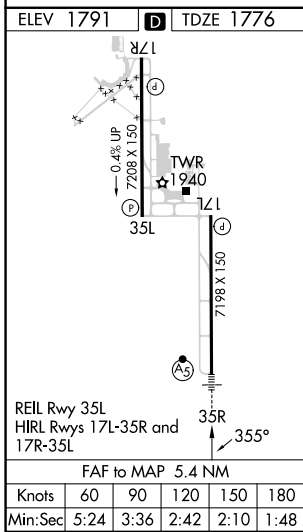
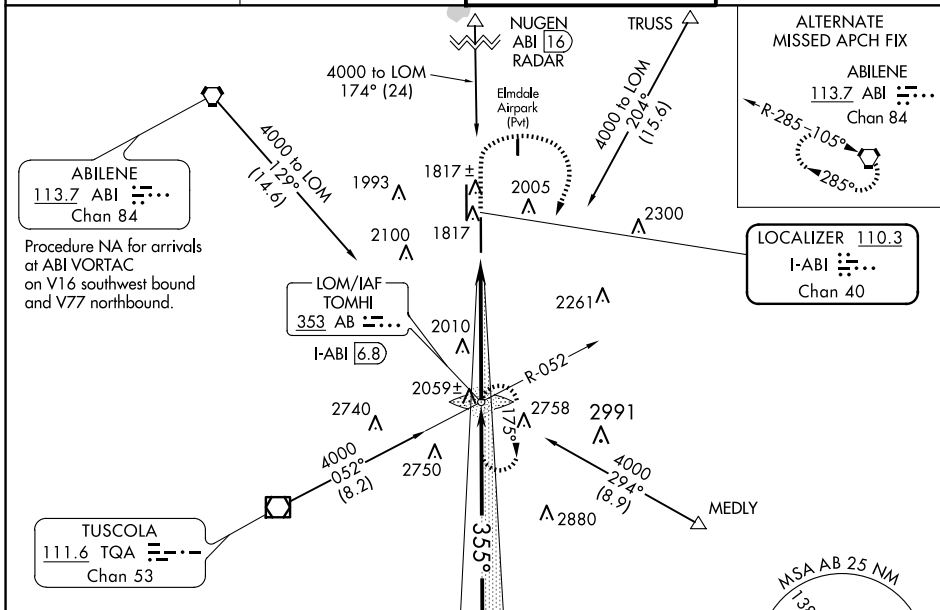
ADF required. RADAR required for procedure entry at NUGEN.

**▼** For inop ALS, increase S-ILS 35R Cat E visibility to RVR 4000, and S-LOC 35R Cat C/D/E visibility to 1 3/8 SM.  
**▲** \*\* RVR 1800 authorized with use of FD or AP or HUD to DA.



MISSED APPROACH: Climb to 3300 then climbing right turn to 4000 direct TOMHI LOM/INT/I-ABI 6.8 DME and hold.

ATIS <b>118.25</b>	ABILENE APP CON <b>125.0 336.3 (EAST)</b> <b>127.2 282.3 (WEST)</b>	ABILENE TOWER <b>120.1 257.8</b>	GND CON <b>121.7 348.6</b>
-----------------------	---	-------------------------------------	-------------------------------



CATEGORY	A	B	C	D	E
S-ILS 35R**	1976/24		200 (200-1/2)		
S-LOC 35R	2260/24	484 (500-1/2)	2260/50 484 (500-1)		
<b>C</b> CIRCLING	2300-1 509 (600-1)	2320-1 529 (600-1)	2420-1 3/4 629 (700-1 3/4)	2460-2 669 (700-2)	2620-3 829 (900-3)