

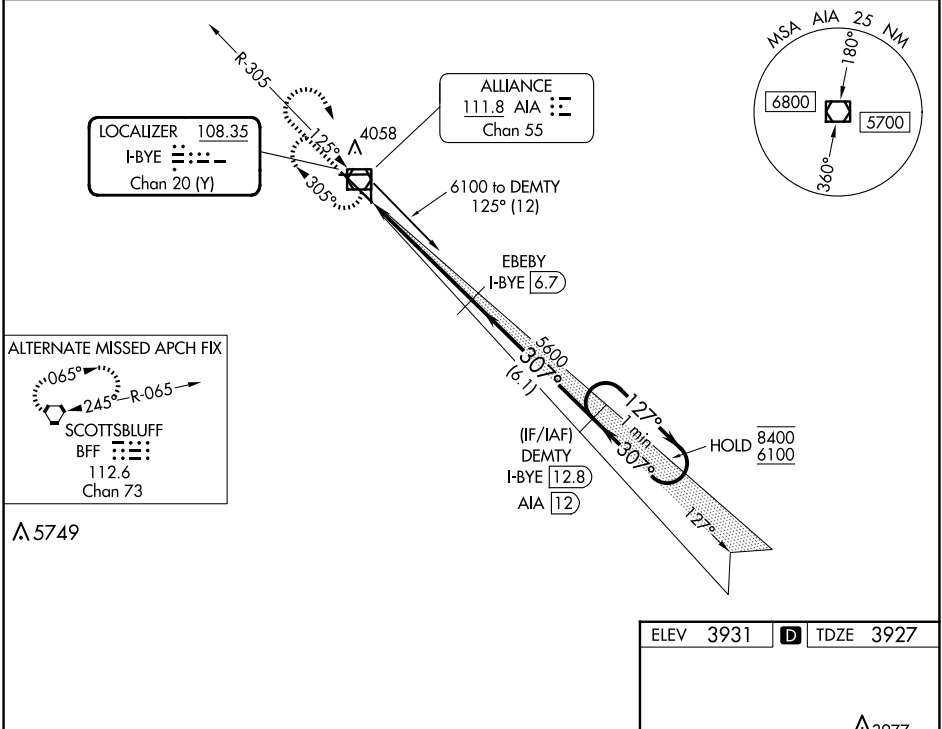
LOC/DME I-BYE 108.35 Chan 20 (Y)	APP CRS 307°	Rwy Idg 9203 TDZE 3927 Apt Elev 3931
---	------------------------	---

ILS or LOC RWY 30

ALLIANCE MUNI (AIA)

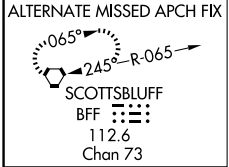
DME required. ▲ NA For inop ALS, increase S-LOC 30 Cats C/D visibility to 1½ SM.	MALSR 	MISSED APPROACH: Climb to 5700 then right turn direct AIA VOR/DME and hold.
--	-----------	---

ASOS 135.075	DENVER CENTER 127.95 338.2	UNICOM 123.0 (CTAF) 0
------------------------	--------------------------------------	---------------------------------

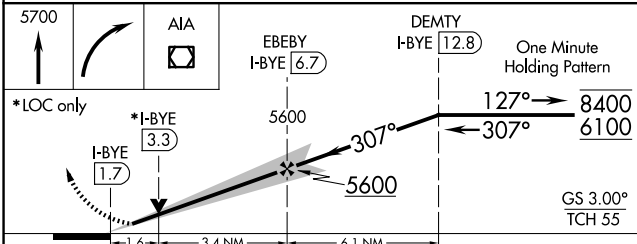


NC-2, 20 MAR 2025 to 17 APR 2025

NC-2, 20 MAR 2025 to 17 APR 2025



▲ 5749



CATEGORY	A	B	C	D
S-ILS 30	4127-½ 200 (200-½)			
S-LOC 30	4500-½ 573 (600-½)	4500-1¼ 573 (600-1¼)		
CIRCLING	4500-1 569 (600-1)	4520-1 589 (600-1)	4580-1¾ 649 (700-1¾)	4640-2¼ 709 (800-2¼)

