

# HI-VOR or TACAN RWY 13

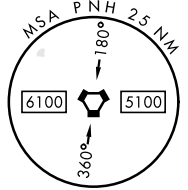
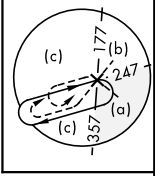
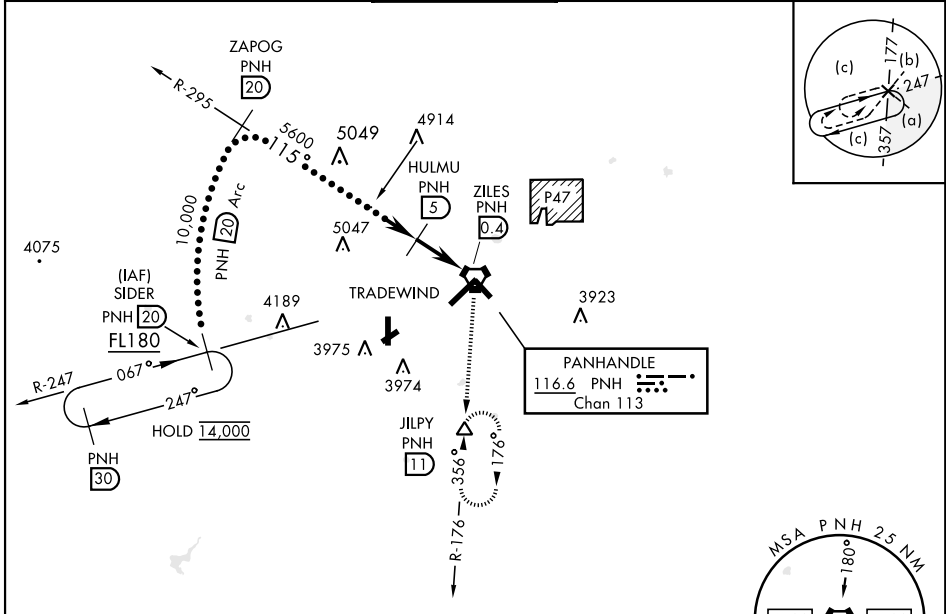
VORTAC PNH <b>116.6</b> Chan <b>113</b>	APCH CRS <b>115°</b>	Rwy ldg TDZE Arpt Elev <b>7901</b> <b>3603</b> <b>3607</b>	[USAF]	RICK HUSBAND AMARILLO INTL (KAMA)
---	-------------------------	---	--------	-----------------------------------

DME required

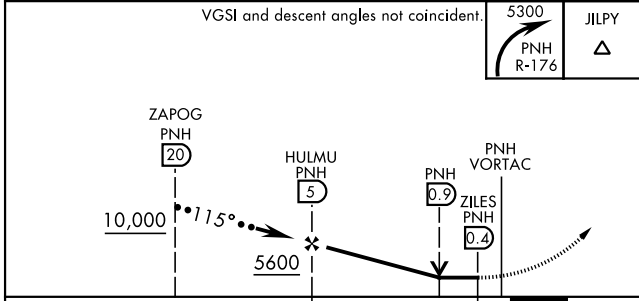
When local altimeter setting not received, use Borger altimeter setting.

MISSED APPROACH: Climbing right turn to 5300 on PNH VORTAC R-176 to JILPY/11 DME and hold.

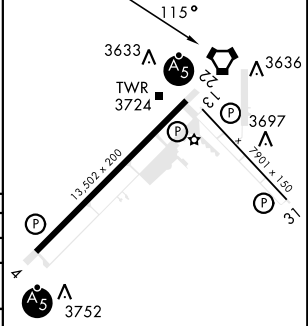
ATIS <b>118.85 350.3</b>	AMARILLO APP CON <b>119.5 307.0</b>	AMARILLO TOWER ★ <b>118.3(CTAF) 257.9</b>	GND CON <b>121.9 348.6</b>	CLNC DEL <b>121.65 239.275</b>	ASR
-----------------------------	--	--	-------------------------------	-----------------------------------	-----



EMERG SAFE ALT 100 NM 7500



ELEV	3607	TDZE	3603
------	------	------	------



CATEGORY	C	D	E
	4040-1¼	437	(500-1¼)
S-13	4240-1¾	4280-2¼	4460-3
CIRCLING	633 (700-1¾)	673 (700-2¼)	853 (900-3)
WITH BORGER ALTIMETER SETTING			
S-13	4200-1¾	597	(600-1¾)
CIRCLING	4400-2¼	4440-2¾	4620-3
	793 (900-2¼)	833 (900-2¾)	1013 (1100-3)

HIRL all rwys

REIL Rwy 13

# HI-VOR or TACAN RWY 13



SC-2, 20 MAR 2025 to 17 APR 2025

SC-2, 20 MAR 2025 to 17 APR 2025