

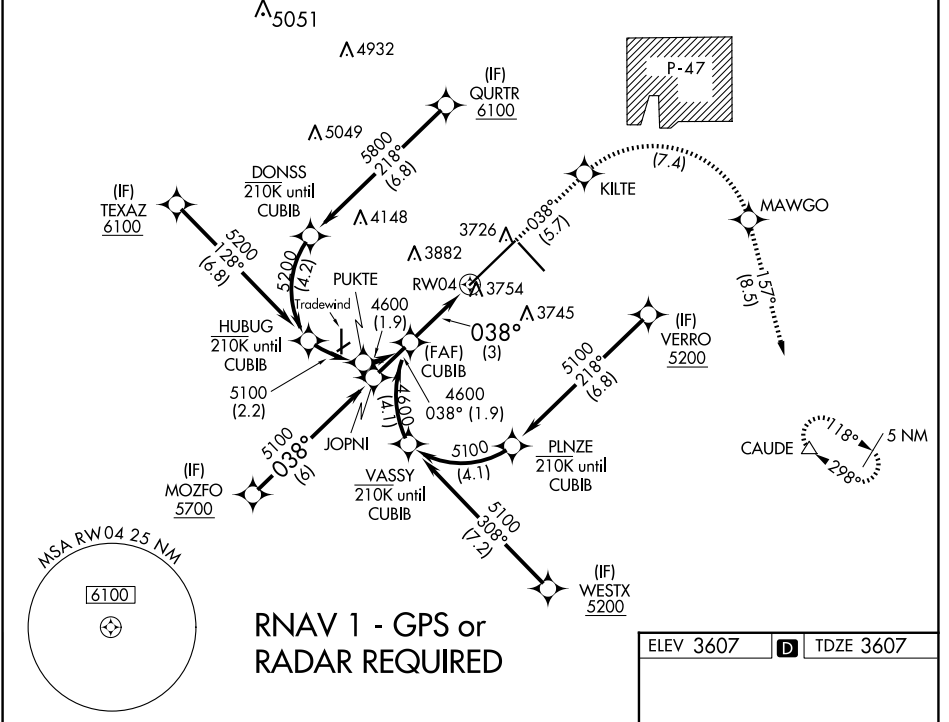
APP CRS 038°	Rwy Idg TDZE Apt Elev	13502 3607 3607
------------------------	-----------------------------	--

RNAV (RNP) Z RWY 4

RICK HUSBAND AMARILLO INTL (AMA)

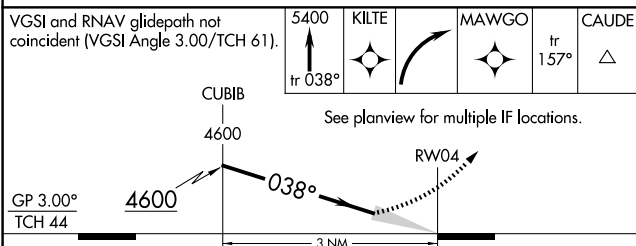
<p>ASR For uncompensated Baro-VNAV systems, procedure NA below -14°C (7°F) or above 53°C (128°F). RF required. GPS required. For inop ALS, increase RNP 0.30 all Cats visibility to 1 1/2 SM.</p>	<p>MALSR</p>	<p>MISSED APPROACH: (Do not exceed 185K until MAWGO) Climb to 5400 on track 038° to KILTE, right turn to MAWGO, then track 157° to CAUDE and hold.</p>
--	---------------------	---

<p>ATIS 118.85 350.3</p>	<p>AMARILLO APP CON* 119.5 307.0</p>	<p>AMARILLO TOWER* 118.3(CTAF) 257.9</p>	<p>GND CON 121.9 348.6</p>	<p>CLNC DEL 121.65 239.275</p>	<p>UNICOM 122.95</p>
-------------------------------------	---	---	---------------------------------------	---	---------------------------------



SC-2, 20 MAR 2025 to 17 APR 2025

SC-2, 20 MAR 2025 to 17 APR 2025



GP 3.00° TCH 44	4600	3 NM	038°	RW04
--------------------	------	------	------	------

CATEGORY	A	B	C	D
RNP 0.12 DA		3969/40	362 (400-3/4)	
RNP 0.30 DA		4019/50	412 (500-1)	

AUTHORIZATION REQUIRED

