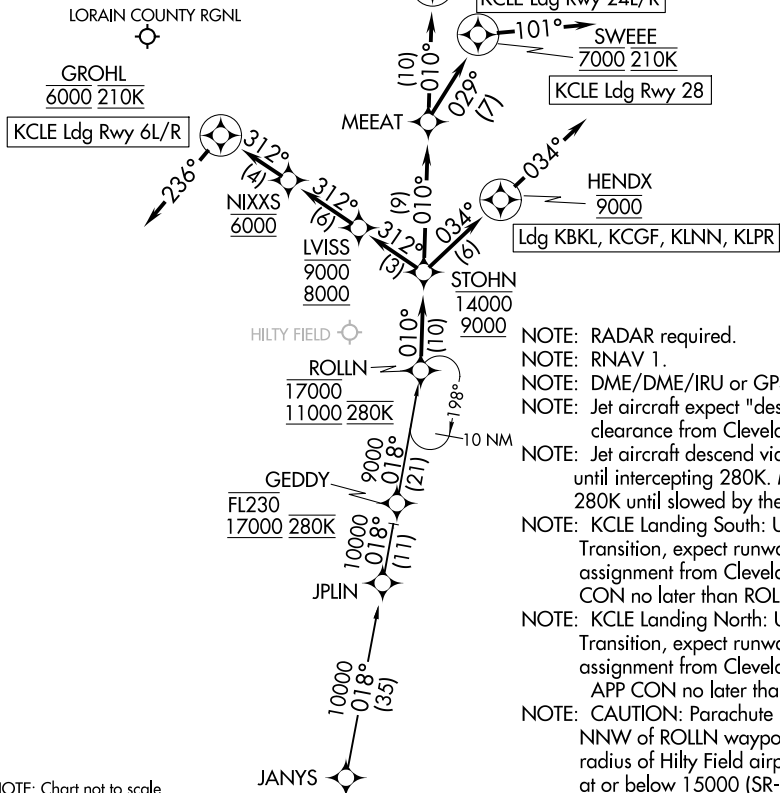


CLEVELAND APP CON  
126.55 346.325  
BKL ATIS  
125.25  
CLE D-ATIS  
127.85



- NOTE: RADAR required.
- NOTE: RNAV 1.
- NOTE: DME/DME/IRU or GPS required.
- NOTE: Jet aircraft expect "descend via" clearance from Cleveland Center.
- NOTE: Jet aircraft descend via Mach number until intercepting 280K. Maintain 280K until slowed by the STAR.
- NOTE: KCLE Landing South: Use Rwy 24R Transition, expect runway assignment from Cleveland APP CON no later than ROLLN.
- NOTE: KCLE Landing North: Use Rwy 6L Transition, expect runway assignment from Cleveland APP CON no later than ROLLN.
- NOTE: CAUTION: Parachute jumping 4 NM NNW of ROLLN waypoint, 3 NM radius of Hilty Field airport (OI68) at or below 15000 (SR-SS).

NOTE: Chart not to scale.

ARRIVAL ROUTE DESCRIPTION

JANYS TRANSITION (JANYS.ROLLN2)

- KCLE: From ROLLN on track 010° to cross STOHN between 9000 and 14000.
- LANDING KCLE RUNWAYS 6L/R: From STOHN on track 312° to cross LVISS between 8000 and 9000, then on track 312° to cross NIXXS at 6000, then on track 312° to cross GROHL at 6000 and at 210K, then on heading 236° or as assigned by ATC. Expect ILS, RNAV (RNP), or RNAV (GPS) approach from GROHL, or RADAR vectors to final approach course.
- LANDING KCLE RUNWAYS 24L/R: From STOHN on track 010° to MEEAT, then on track 010° to cross CLAPT at 7000 and at 210K, then on heading 056° or as assigned by ATC. Expect RNAV (RNP) approach from CLAPT or RADAR vectors to final approach course.
- LANDING KCLE RUNWAY 28: From STOHN on track 010° to MEEAT, then on track 029° to cross SWEEE at 7000 and at 210K, then on heading 101° or as assigned by ATC. Expect RADAR vectors to final approach course.
- LANDING KLPR/KLNN/KCGF/KBKL: From ROLLN on track 010° to cross STOHN between 9000 and 14000, then on track 034° to cross HENDX at 9000, then on track 034°. Expect RADAR vectors to final approach course.