

WAAS CH <b>93927</b> <b>W17A</b>	APP CRS <b>166°</b>	Rwy Idg TDZE Apt Elev	<b>6501</b> <b>5202</b> <b>5245</b>
--	------------------------	-----------------------------	---

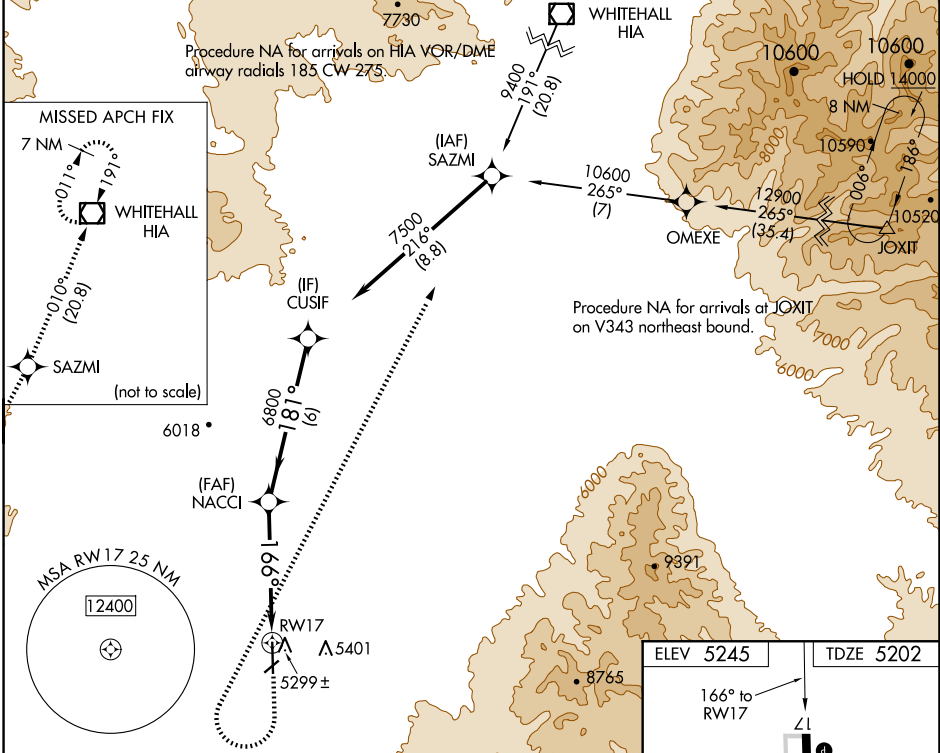
# RNAV (GPS) RWY 17

DILLON (DLN)

**⚠** When local altimeter setting not received, procedure NA.  
 DME/DME RNP-0.3 NA. For uncompensated Baro-VNAV systems,  
 LNAV/VNAV NA below -27°C (-16°F) or above 51°C (124°F).  
 Night Landing: Rwy 4, 22, 35 NA.

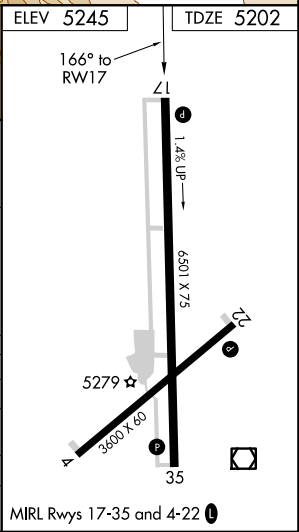
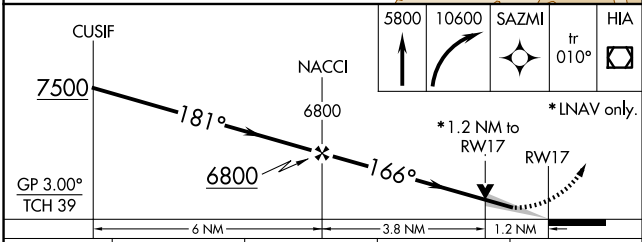
**MISSED APPROACH:** Climb to 5800 then climbing  
 right turn to 10600 direct SAZMI and on track 010°  
 to HIA VOR/DME and hold.

ASOS <b>135.225</b>	SALT LAKE CENTER <b>132.4 338.3</b>	UNICOM <b>122.8 (CTAF)</b>
------------------------	--	-------------------------------



NW-1, 20 MAR 2025 to 17 APR 2025

NW-1, 20 MAR 2025 to 17 APR 2025



CATEGORY	A	B	C	D
LPV DA		5452-7/8	250 (200-7/8)	
LNAV/VNAV DA		5525-11/8	323 (300-11/8)	
LNAV MDA	5560-1	358 (400-1)	5560-11/8	358 (400-11/8)
<b>C</b> CIRCLING	5760-1 515 (600-1)	5860-1 615 (700-1)	5980-2 735 (800-2)	6300-3 1055 (1100-3)