

VOR/DME DLN 113.0 Chan 77	APP CRS 185°	Rwy Idg TDZE N/A N/A Apt Elev 5245
---	------------------------	--

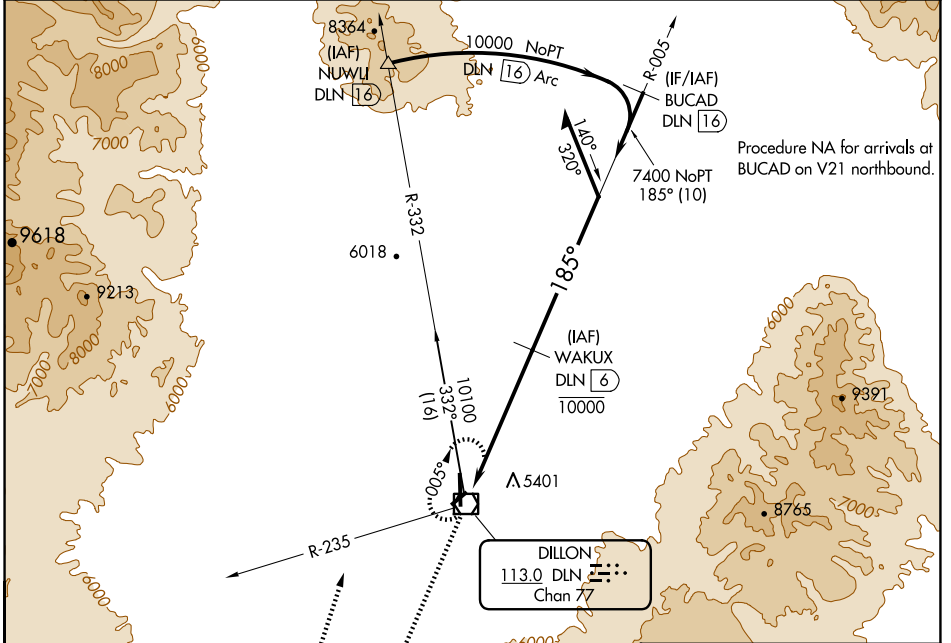
VOR/DME-B

DILLON (DLN)

⚠ When local altimeter setting not received, procedure NA. Night Landing: Rwy 4, 22, 35 NA. Helicopter visibility reduction below 1 SM not authorized.

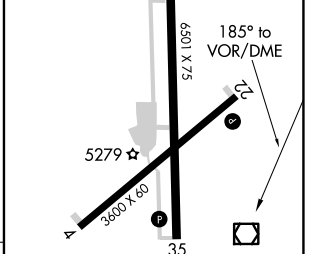
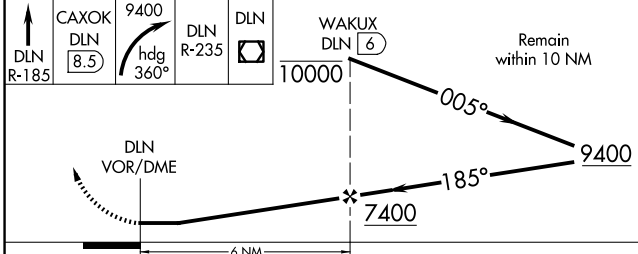
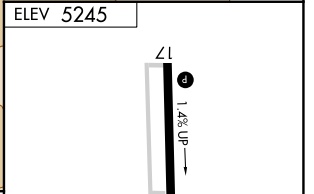
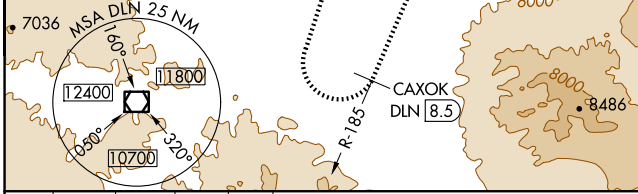
⚠ MISSED APPROACH: Climb on DLN VOR/DME R-185 to CAXOK/8.5 DME then climbing right turn to 9400 on heading 360° and on DLN VOR/DME R-235 to DLN VOR/DME and hold.

ASOS 135.225	SALT LAKE CENTER 132.4 338.3	UNICOM 122.8 (CTAF) 0
------------------------	--	---------------------------------



NW-1, 20 MAR 2025 to 17 APR 2025

NW-1, 20 MAR 2025 to 17 APR 2025



CATEGORY	A	B	C	D
CIRCLING	5800-1 555 (600-1)	5860-1 615 (700-1)	5980-2 735 (800-2)	6300-3 1055 (1100-3)

MIRL Rwy 17-35 and 4-22 0