

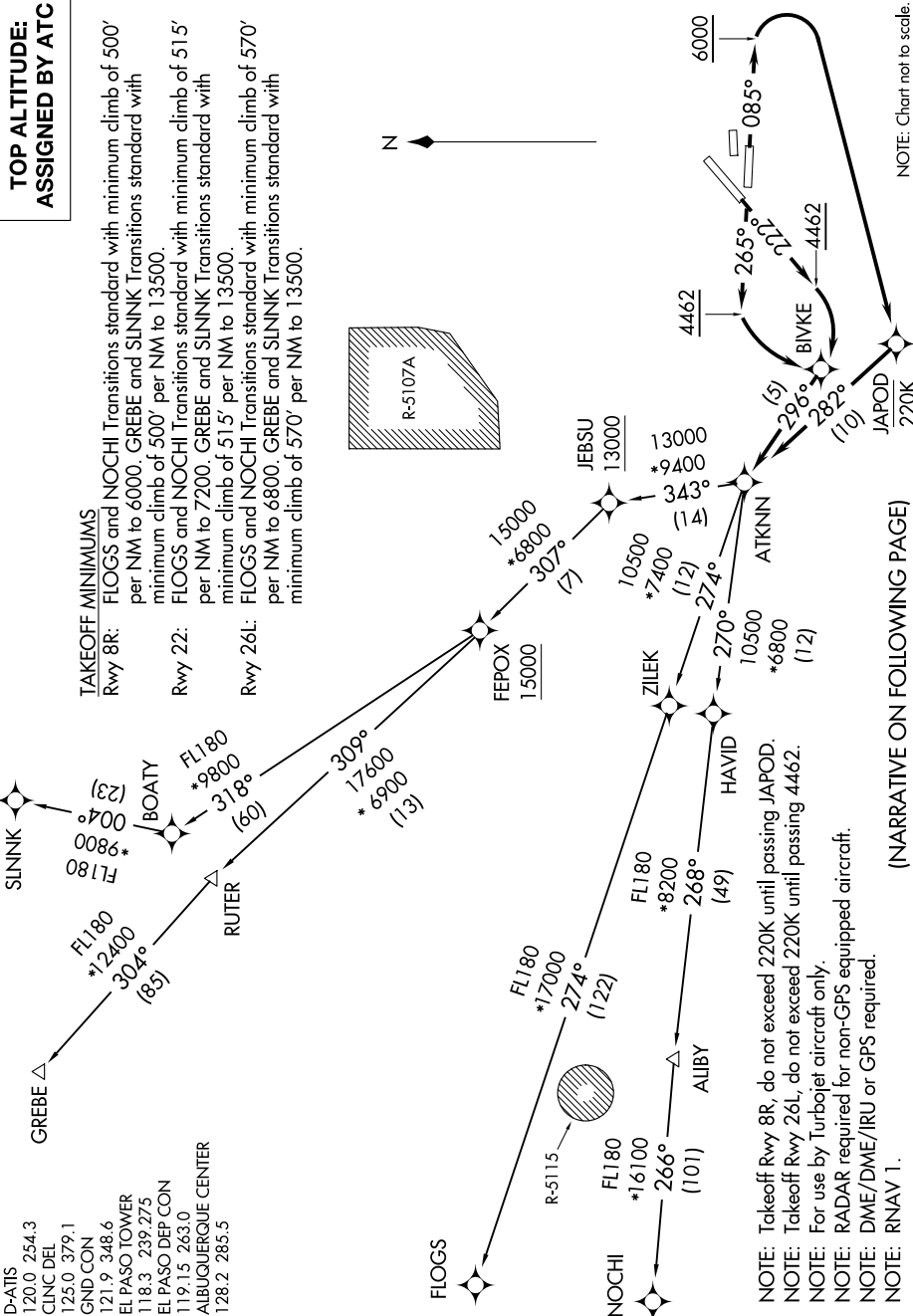
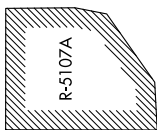
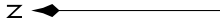
# ATKNN FIVE DEPARTURE (RNAV)

SC-3, 20 MAR 2025 to 17 APR 2025

## TOP ALTITUDE: ASSIGNED BY ATC

**TAKEOFF MINIMUMS**  
 Rwy 8R: FLOGS and NOCHI Transitions standard with minimum climb of 500' per NM to 6000. GREBE and SLINK Transitions standard with minimum climb of 500' per NM to 13500.  
 Rwy 22: FLOGS and NOCHI Transitions standard with minimum climb of 515' per NM to 7200. GREBE and SLINK Transitions standard with minimum climb of 515' per NM to 13500.  
 Rwy 26L: FLOGS and NOCHI Transitions standard with minimum climb of 570' per NM to 6800. GREBE and SLINK Transitions standard with minimum climb of 570' per NM to 13500.

- D-ATIS 120.0 254.3
- CLNC DEL 125.0 379.1
- GND CON 121.9 348.6
- EL PASO TOWER 118.3 239.275
- EL PASO DEP CON 119.15 263.0
- ALBUQUERQUE CENTER 128.2 285.5



NOTE: Chart not to scale.

(NARRATIVE ON FOLLOWING PAGE)

SC-3, 20 MAR 2025 to 17 APR 2025

# ATKNN FIVE DEPARTURE (RNAV)

(ATKNN5.ATKNN) 21JUL16