

EL PASO, TEXAS

# HI-VOR or TACAN RWY 26L

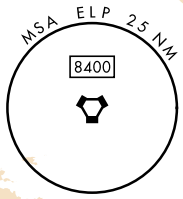
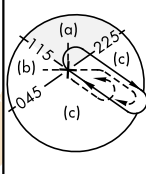
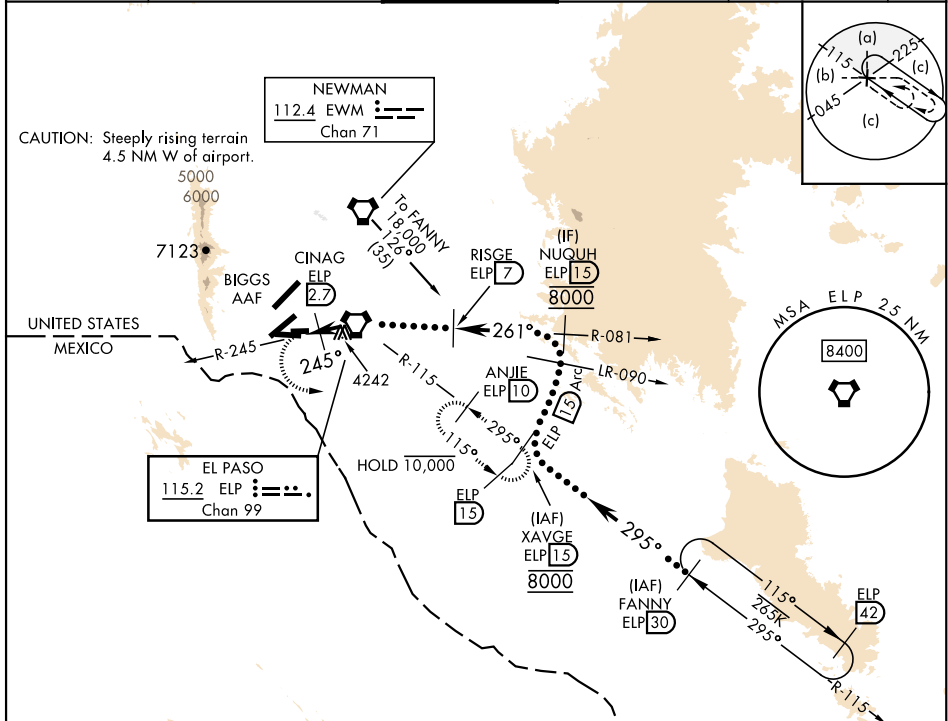
VORTAC ELP <b>115.2</b> Chan <b>99</b>	APCH CRS <b>245°</b>	Rwy Idg THRE <b>9025</b> <b>3962</b> Arpt Elev <b>3962</b>
--	-------------------------	---

[USAF]

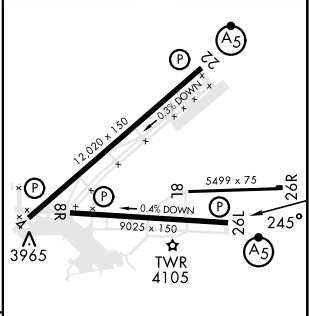
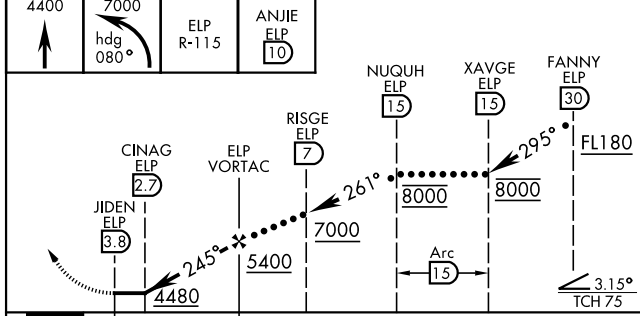
EL PASO INTL (KELP)

DME required	MALS R (A5)	MISSED APPROACH: Climb to 4400, then climbing left turn to 7000 via heading 080° and ELP VORTAC R-115 to ANJIE/ELP 10 DME and hold, continue climb in hold to 7000.
--------------	-------------	---

ATIS <b>120.0 254.3</b>	APP CON S of V16 <b>119.15 353.5</b> N of V16 <b>124.25 298.85</b>	TOWER <b>118.3 239.275</b>	GND CON <b>121.9 348.6</b>	CLNC DEL <b>125.0 379.1</b>	ASR
----------------------------	--	-------------------------------	-------------------------------	--------------------------------	-----



ELEV	3962	THRE	3962
------	------	------	------



CATEGORY	C	D	E
S-26L	4380-1 $\frac{1}{8}$	418	(500-1 $\frac{1}{8}$ )
CIRCUING*	4480-1 $\frac{1}{2}$ 518 (600-1 $\frac{1}{2}$ )	4680-2 $\frac{1}{4}$ 718 (800-2 $\frac{1}{4}$ )	4700-2 $\frac{1}{2}$ 738 (800-2 $\frac{1}{2}$ )

REIL Rwy 4, 8R  
MIRL Rwy 8L-26R  
HIRL Rwy 4-22 and 8R-26L

EL PASO, TEXAS 31°48'N-106°23'W EL PASO INTL (KELP)

# HI-VOR or TACAN RWY 26L



SC-3, 20 MAR 2025 to 17 APR 2025

SC-3, 20 MAR 2025 to 17 APR 2025