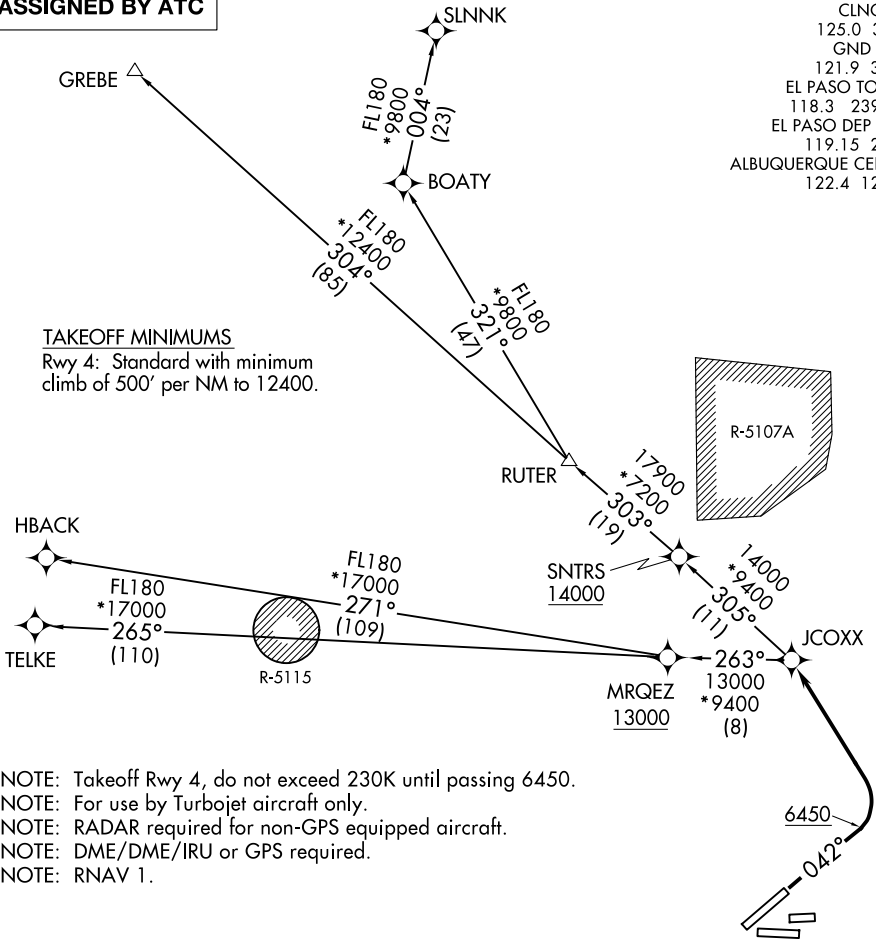


**TOP ALTITUDE:  
ASSIGNED BY ATC**

- D-ATIS
- 120.0 254.3
- CLNC DEL
- 125.0 379.1
- GND CON
- 121.9 348.6
- EL PASO TOWER
- 118.3 239.275
- EL PASO DEP CON
- 119.15 263.0
- ALBUQUERQUE CENTER
- 122.4 122.55

**TAKEOFF MINIMUMS**

Rwy 4: Standard with minimum climb of 500' per NM to 12400.



- NOTE: Takeoff Rwy 4, do not exceed 230K until passing 6450.
- NOTE: For use by Turbojet aircraft only.
- NOTE: RADAR required for non-GPS equipped aircraft.
- NOTE: DME/DME/IRU or GPS required.
- NOTE: RNAV 1.

NOTE: Chart not to scale.

**DEPARTURE ROUTE DESCRIPTION**

TAKEOFF RWY 4: Climb heading 042° to 6450, then left turn direct JCOXX, thence. . .  
 . . .(transition). Maintain altitude as assigned by ATC, expect filed altitude 10 minutes after departure.

- GREBE TRANSITION (JCOXX2.GREBE)
- HBACK TRANSITION (JCOXX2.HBACK)
- SLNNK TRANSITION (JCOXX2.SLNNK)
- TELKE TRANSITION (JCOXX2.TELKE)