

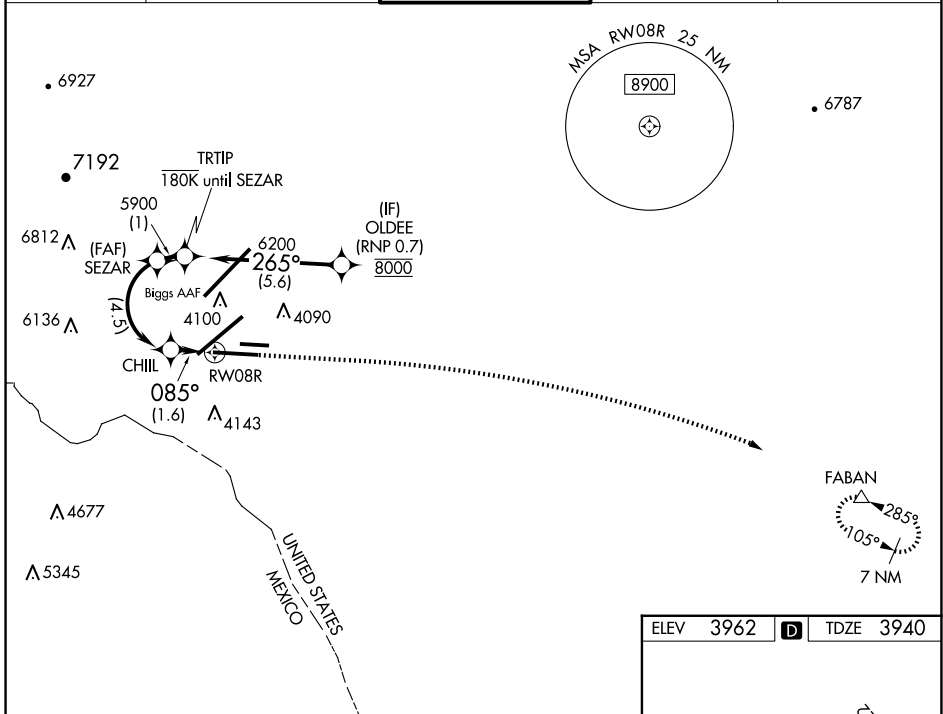
APP CRS	Rwy Idg	9025
085°	TDZE	3940
	Apt Elev	3962

RNAV (RNP) Y RWY 8R

EL PASO INTL (ELP)

RNP AR APCH. RF required.	MISSED APPROACH: Climb to 4400 then climbing right turn to 7500 direct FABAN and hold.
T For uncompensated Baro-VNAV systems, procedure NA below -5°C or above 54°C. ASR	

D-ATIS 120.0 254.3	EL PASO APP CON 124.25 298.85	EL PASO TOWER 118.3 239.275	GND CON 121.9 348.6	CLNC DEL 125.0 379.1
------------------------------	---	---------------------------------------	-------------------------------	--------------------------------



SC-3, 20 MAR 2025 to 17 APR 2025

SC-3, 20 MAR 2025 to 17 APR 2025

ELEV 3962 D TDZE 3940	
VGSi and RNAV glidepath not coincident (VGSi Angle 3.00/TCH 75).	
<p>OLDEE 8000</p> <p>GP 3.00° TCH 50</p> <p>TRTIP 6200</p> <p>SEZAR 5900</p> <p>CHIL 4477</p> <p>RWY 8R 4143</p> <p>5.6 NM 1 NM 4.5 NM 1.6 NM</p>	<p>4400</p> <p>7500</p> <p>FABAN</p> <p>7 NM</p> <p>285°</p> <p>105°</p>
CATEGORY	A B C D
RNP 0.20 DA	4193- ³ / ₄ 253 (300- ³ / ₄)
RNP 0.30 DA	4234- ⁷ / ₈ 294 (300- ⁷ / ₈)
AUTHORIZATION REQUIRED	
<p>MIRL Rwy 8L-26R</p> <p>HIRL Rwy 4-22 and 8R-26L</p> <p>REIL Rwy 4 and 8R</p>	