

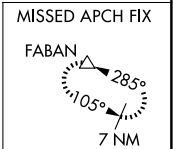
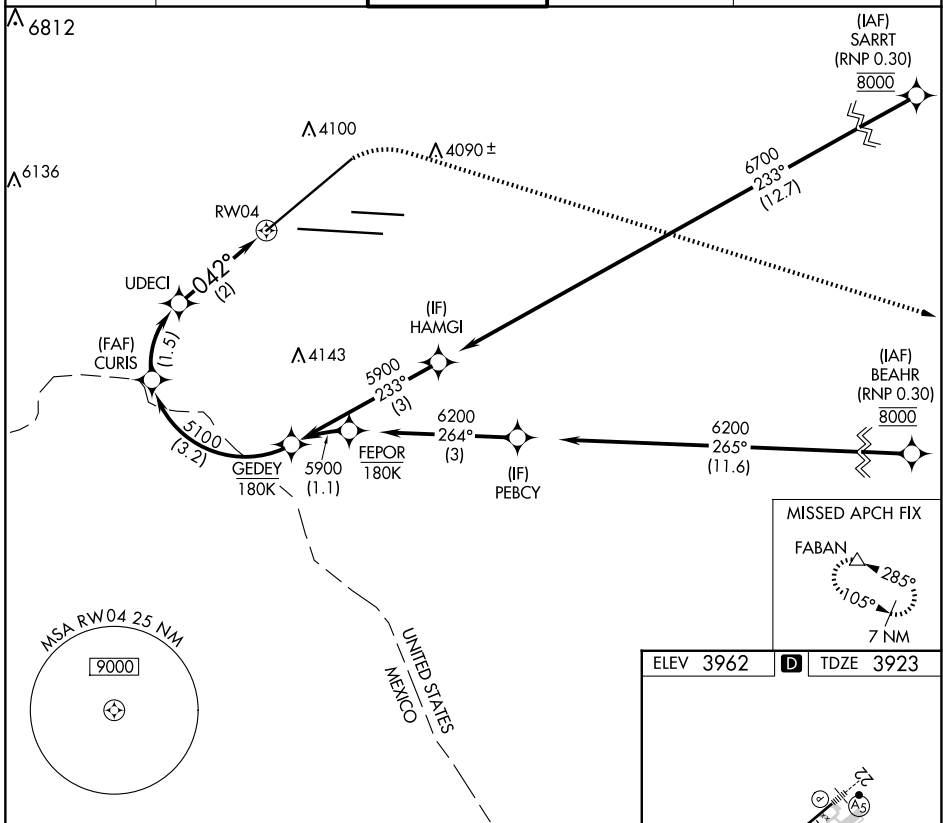
APP CRS	Rwy Idg	12020
042°	TDZE	3923
	Apt Elev	3962

RNAV (RNP) Z RWY 4

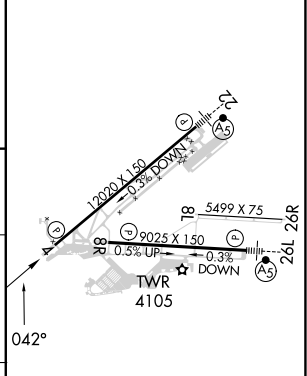
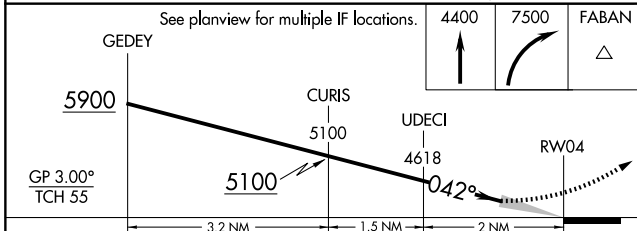
EL PASO INTL (ELP)

RNP AR APCH. RF required.		MISSED APPROACH: Climb to 4400 then climbing right turn to 7500 direct FABAN and hold.	
ASR For uncompensated Baro-VNAV systems, procedure NA below -5°C or above 54°C.			

D-ATIS	EL PASO APP CON	EL PASO TOWER	GND CON	CLNC DEL
120.0 254.3	124.25 298.85	118.3 239.275	121.9 348.6	125.0 379.1



ELEV 3962	D TDZE 3923
-----------	--------------------



See planview for multiple IF locations.	4400	7500	FABAN
GEDEY	CURIS	UDECI	RW04
5900	5100	4618	
GP 3.00° TCH 55		042°	
	3.2 NM	1.5 NM	2 NM
CATEGORY	A	B	C
RNP 0.20 DA	4282/55		359 (400-1)
RNP 0.30 DA	4352-1 ¼		429 (400-1 ¼)

AUTHORIZATION REQUIRED

MIRL Rwy 8L-26R
REIL Rwy 4 and 8R
HIRL Rwy 4-22 and 8R-26L

SC-3, 20 MAR 2025 to 17 APR 2025

SC-3, 20 MAR 2025 to 17 APR 2025